



Queensland Museum

Annual Report 2001–02

ar



The Honourable Matt Foley, MLA
Minister for Employment Training and Youth
and Minister for the Arts

Dear Minister,

I take pleasure in presenting to you the Annual Report of the Board of the Queensland Museum for the year ending 30 June 2002.

Yours sincerely

Nerolie Withnall
Chairman
Board of the Queensland Museum

Presented to Parliament

Our Vision

The Queensland Museum will be recognised as an innovative, exciting and accessible museum of science, environment and human achievement, of international standing, reaching out to all Queenslanders.

Our Mission

To create a stimulating environment of discovery and understanding. We will achieve this by –

- Working with and empowering our communities
- Preserving and interpreting material evidence and
- Telling the changing story of Queensland and its place in the world.

Our Values

In fulfilling its mission, the Queensland Museum is committed to the following guiding values –

- Excellence in research underpinning all Museum programs
- The importance of the Museum's role as a generator and communicator of knowledge
- Professional management and care of the State collection as a unique resource to be held in trust for present and future generations
- The relevance of all Museum endeavours to contemporary Queensland society
- Community participation in the business of the Museum
- High standards of access, customer service, enjoyment and comfort for all visitors

- The provision of lifelong learning opportunities for the whole community
- High ethical standards in all Museum activities
- Recognition of, and respect for, biological and cultural diversity
- Working together and respecting each other's contributions.

Highlights and Achievements

- A major review of the organisational structure of the Queensland Museum was undertaken during the year, to better align the structure with the new vision and strategy for the Museum as a major player in the State's knowledge industries.
- A seven-point business improvement strategy was developed to redress the Queensland Museum's previously deteriorating financial situation and provide a platform for the Museum change management process.
- The Stage 2 expansion of Cobb & Co. Museum was opened on 5 October 2001 as part of the Queensland Heritage Trails Network, with widespread community support and involvement.
- The Queensland Museum Loans Service received the 2001 Premier's Award for Excellence in Public Sector Management, for Services to Rural and Regional Queensland.
- Assistant Curator Mr Scott Hocknull was named 2002 Young Australian of the Year following the November announcement of his receipt of a number of Queensland Achievers awards.
- Conservator Mr Andrew Viduka was awarded a Fellowship by the Winston Churchill Memorial Trust to survey methods used by large institutions specialising in the conservation of wet archaeological materials.
- In 2001, Senior Curator Dr Judith McKay was one of three Queenslanders to receive an inaugural Queensland-Smithsonian Fellowship award. Between February and May 2002, Judith travelled overseas to record how Queensland has presented itself to the rest of the world for more than a century through exhibits at world expositions.
- In September, staff excavated the first of many bones of a large 95 million-year-old sauropod dinosaur from near Winton. This is the largest dinosaur found in Australia. Excavations continued in June 2002, supported by corporate sponsorship, and are expected to continue for at least three years. The discovery of 'Elliot' has again positioned the Museum at the forefront of Australian palaeontology.

Contents

02	Chairman's Report
03	Director's Report
04	Board of the Queensland Museum
05	Organisational Structure and Responsibilities
06	Strategic Direction:
07	1. Statewide Museum Services
13	2. The Visitor Experience
14	3. Research and Scholarship
17	4. Caring for Collections
19	5. Information Management and Information Technology
20	6. Marketing
21	7. Management
22	8. Resources
25	Appendices:
26	I Functions and Powers of the Board
28	II Annual Performance Indicators
34	III Publications
38	IV Grants Won and Consultancies
44	V Overseas Travel
45	VI Temporary Exhibitions
48	VII Sponsorships
50	VIII Financial Statements

Chairman's Report

C

This has been a year of growth for the Queensland Museum.

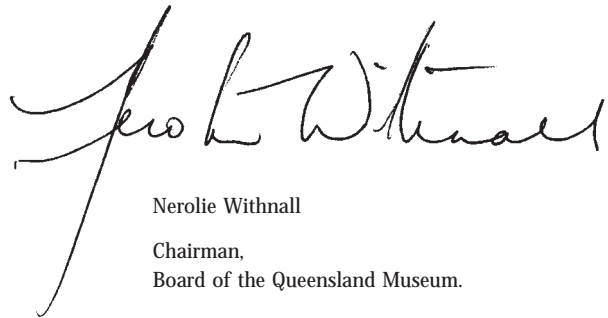
Expansion of the Queensland Museum's network in regional Queensland has continued. Following the opening of the Museum of Tropical Queensland in Townsville in June 2000, this year has seen major improvements at Cobb and Co Museum in Toowoomba with the opening of its Stage 2 expansion in October 2001. This development was made possible through funding from the Queensland Heritage Trails Network. The exciting \$20 million Workshops Rail Museum in Ipswich is poised to open in August 2002.

Queensland is a large and decentralised State and the Queensland Museum has initiated a number of strategies to provide Queenslanders with better access to their Museum. During the year the Sciencentre Roadshow took a stimulating, hands-on science program to 34,568 people in over 30 centres throughout Queensland. As part of this yearlong statewide tour, the excitement of science was taken for the first time to eight isolated communities on Cape York.

A statewide network of Museum Development Officers continues to provide support for small museums, art galleries and historical centres. The unique Queensland Museum Loans Service, which distributes 230 museum kits via 31 distribution centres, was the winner of the 2001 Premier's Award for Excellence in Public Sector Management for services to rural and regional Queensland.

The Museum's popular publications and the website are also powerful means for Queenslanders to access the intellectual assets of the Museum. The Queensland Museum is now strongly positioned as a provider of premier guidebooks with its wildlife series achieving combined sales of more than 75,000 copies. The improved Museum Explorer website received almost two million page views, an increase of 58% over the previous year.

The Queensland Museum will continue to reach out and touch the lives of Queenslanders no matter where they live in this great State.



Nerolie Withnall

Chairman,
Board of the Queensland Museum.



Director's Report

The financial year 2001-2002 was a time of challenge and achievement for the Queensland Museum.

On 10 May 2002 the Honourable Matt Foley, Minister for Employment, Training and Youth and Minister for the Arts, outlined a new vision for the Queensland Museum in a Ministerial Statement to Parliament. This announcement was the culmination of two years of planning and consultation that resulted in a blue print for the growth of the Museum over the next four years and beyond. Integral to the realisation of this vision has been the development of a new organisational structure to be implemented from 1 July 2002 and the adoption of a seven-point business improvement strategy that will address the Museum's financial challenges.

Additional recurrent funding of \$0.6 million per annum for the Museum of Tropical Queensland in Townsville has assured the long-term viability of this important regional asset. The efforts of Minister Foley in securing this funding are gratefully acknowledged.

The research achievements of the Queensland Museum have been outstanding this year. Four issues of the *Memoirs of the Queensland Museum* were published, incorporating 64 original research papers. Three researchers completed major works on sponges (Dr John Hooper), sea squirts (Dr Patricia Mather), and prawns, shrimps, lobsters and yabbies (Mr Peter Davie). In 2001, Dr Judith McKay was one of three Queenslanders to receive an inaugural Queensland Smithsonian Fellowship, and in 2002 Mr Andrew Viduka was awarded a Churchill Fellowship.

The Queensland Museum's palaeontology team had a memorable year with the discovery of Elliot, Australia's largest dinosaur, near Winton in September 2001. This was followed by a successful excavation in June 2002, which unearthed further evidence of this 95 million-year-old sauropod. The youngest member of the team, Assistant Curator Scott Hocknull, was named 2002 Young Australian of the Year.

The repatriation of Aboriginal and Torres Strait Islander ancestral remains, burial goods and secret and sacred objects has been a high priority for the Queensland Museum this year with a record number of objects and remains being returned to communities.

The way ahead for the Museum is now clear. With our dedicated staff and committed Board, the Museum's potential to contribute to the Smart State, its ability to engage with all sectors of the Queensland community and its capacity to enrich the lives of Queenslanders has never been greater.



Dr Ian Galloway,
Director and
Chief Executive Officer,
Queensland Museum.



Board of the Queensland Museum

The Board of the Queensland Museum was established in 1970 under the provisions of the Queensland Museum Act 1970, although the Queensland Museum first began its long history of service provision to the Government and people of the State in 1862. The only substantial changes to this Act came with the Arts Legislation Amendment Act 1977. The statutory functions and powers of the Board are detailed in Appendix I.

The Board is appointed by the Governor-in-Council on the recommendation of the Minister for the Arts. Under the amended Act, terms are for up to five years.

All members bring experience and specific expertise to the Board, including a broad appreciation of the Museum's major fields of endeavour.

The Board met eleven times during the year, with eight meetings at the Queensland Museum South Bank and one each at The Workshops Rail Museum, Queensland Science Centre and Cobb & Co. Museum.

Board Members

Mrs N. Withnall, BA, LLB	Chairman
Dr R. Anderson, OAM	Vice-Chairman
Mr P. Appleton	Member
Ms J. Carne	Member (from 31 January 2002)
Lady Edwards, AM	Member
Mr H. Greenway, FCA, ACIS	Member
Mr R. Heather	Member
Ms A. Jones, BDesSt	Member
Ms J. Lennon, MA(Hons)	Member (to 27 January 2002)
Dr C. Mittelheuser, AM, BSc(Hons), PhD, HonDPhil	Member
Mrs J. Richardson	Member
Ms M. O'Donnell	Government Representative
Dr I. Galloway, BSc(Hons), PhD, MAgSt	Queensland Museum Director
Mr G. Innes, BCom	Observer



Organisational Structure and Responsibilities

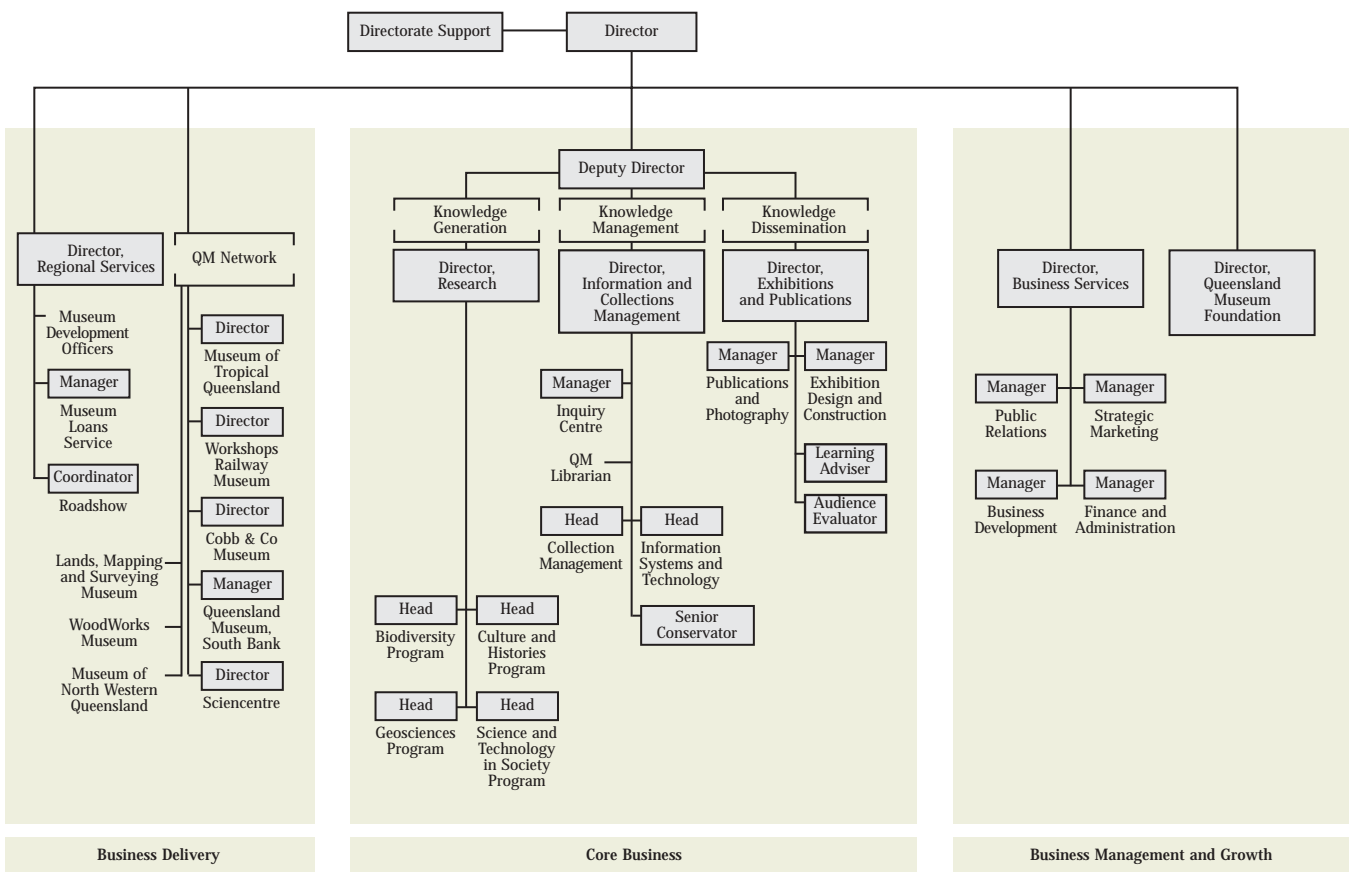
A major review of the organisational structure of the Queensland Museum was undertaken during the year to better align the structure with the new vision and strategy for the Museum as a major player in the State's knowledge industries.

Core business of the Museum is expressed as knowledge generation (Research Division), knowledge management (Information and Collection Management Division) and knowledge dissemination (Exhibitions and Publications Division).

Core business will be delivered by two major vehicles, viz the eight campuses of the Queensland Museum and a coordinated range of regional services (Regional Services Division).

A business management and growth area incorporates the Business Services Division and the Queensland Museum Foundation.

Queensland Museum Organisational Structure – a Knowledge Industry model



Strategic Direction

SD

The Queensland Museum's Strategic Plan outlines the vision and direction for the future. Eight areas are strategically important to the Museum:

1. Statewide museum services

The Queensland Museum is committed to the provision of an effective, statewide, museum service. This will enable the development of a coordinated museum industry in Queensland, bringing a sense of identity and stability to our large and culturally diverse State from which all communities will benefit.

2. The visitor experience

The Museum is committed to continually researching and improving the quality of the visitor experiences, and recognises that the needs of its visitors and other users are varied and changing. The Museum will provide lifelong learning opportunities that meet the needs and expectations of its broad audience, at all stages of their lives.

3. Research and scholarship

The authority with which the Queensland Museum communicates is based on the Museum's long-term commitment to high quality scholarship and research. This provides credibility to the Queensland Museum's public programs and differentiates the Museum from other organisations that provide education-based entertainment.

4. Caring for collections

In undertaking this central role, the Queensland Museum acknowledges its duty of care and recognises that the issue of access is directly related to caring for the collections. The Museum also recognises its responsibility to provide support to other museums and to historical societies to care for the distributed collections of Queensland.

5. Information management and information technology

The Queensland Museum's position in the knowledge industries depends on its ability to maintain and provide access to the vast storehouse of information in the various Museum databases and collections. The Queensland Museum will be a communicator of authoritative knowledge to local, national and global audiences through the innovative use of new technology in the presentation of its programs and the management of its collections and knowledge bases.

6. Marketing

Through effective brand management, advertising and public relations, the Queensland Museum will be positioned as a provider of unique educational experiences that entertain and inform. Market research and audience evaluation will ensure that Museum products and services meet the needs and wants of its visitors.

7. Management

The commitment of Government, Board and staff to the achievement of a common vision is critical to the long-term performance of the Queensland Museum. Leadership at all levels is required for this to occur. The empowerment of staff, their financial accountability and motivation to excel in their appointed field are key priorities for Museum management.

8. Resources

The Queensland Museum's current and future operations are critically dependent on the availability and allocation of resources. A sustained effort is made to increase the absolute quantity of resources available, while achieving optimum allocation to minimise waste, maximise efficiency and provide the best fit with prioritised objectives.

Statewide Museum Services

As the Queensland Government's instrumentality primarily responsible for the State's cultural and natural heritage collections, the Queensland Museum is committed to the provision of an effective, statewide museum service. This will enable the development of a coordinated museum industry in Queensland, bringing a sense of identity and stability to our large and culturally diverse State from which all communities will benefit.

Goals

To ensure that all Queenslanders have access to the services of the Queensland Museum irrespective of where they live in the State.

To be the lead agency for the development of the museum industry in Queensland.

Queensland Museum Network

The statewide delivery of museum services is facilitated through a network of museums established under the approval of the Governor-in-Council. There were eight campuses of the Queensland Museum Network in 2001–2002.

Cobb & Co. Museum, Toowoomba

The Stage 2 expansion of the Cobb & Co. Museum was opened on 5 October 2001 as part of the Queensland Heritage Trails Network, with widespread community support and involvement. The opening celebrations included a Cavalcade of Transport with horse-drawn vehicles through the streets of Toowoomba and the launch of the Toowoomba City Council's

Cultural Card. This Cultural Card is an initiative of the Cobb & Co. Museum and enables all local Toowoomba residents to gain free entry to Cobb & Co., with Council providing an annual, agreed supplementation.

The expansion has enabled the Cobb & Co. Museum to better present exhibitions and public programs of direct relevance to the local community, including the development of the Binangar Indigenous Centre and the establishment of *Cobbs Coffee Shop*.

The National Carriage Collection was maintained to the highest standards of museum practice and on-going research continued into Queensland coach builders. The latter is leading to the development of a detailed database of information. Blacksmithing courses, run in conjunction with the Southern Queensland Institute of TAFE, attracted considerable media interest throughout the year.

The Think Link tourism marketing project funded by the Commonwealth Department of Employment and Workplace Relations attracted international students to the Cobb & Co. Museum's Indigenous cultural programs, hands-on museum experiences and English language learning opportunities. An enhanced variety of education programs was developed,

including programs for presentation in the *Coach Stop* Activity Centre, holiday programs on themes of *Space* and *Skins, Skulls and Skeletons*, and new school programs – local history, Australian animals, fossils and Indigenous culture and language. In addition, the Cobb & Co. Museum became a major distribution centre for Queensland Museum Loans Kits. Many activities were supported by the Museum's 43 volunteers who underwent an extended training program in cooperation with the Toowoomba Visitor Information Centre.

Outlook for 2002–2003

- » Work with the community to develop and implement temporary exhibition programs for the Groom Gallery, People's Gallery and Binangar Centre.
- » Appoint an Indigenous trainee and provide workplace training for the first museum traineeship under the National Training Package for the Museum Industry.
- » Coordinate holiday and school programs relating to Ancient Egypt that also cater for people with disabilities.
- » Complete the Coachbuilders of Queensland database.

Photo courtesy of Toowoomba Chronicle



Photo courtesy of Toowoomba Chronicle

Lands, Mapping and Surveying Museum, Brisbane

This joint initiative of the Department of Natural Resources and Mines and the Queensland Museum collects and interprets significant aspects of the surveying and mapping of Queensland.

Two permanent displays were prepared for the Ram Park Museum in Blackall on the themes, *The Black Stump* (astronomy in Blackall) and *Beyond the Black Stump* (the survey of the Queensland–Northern Territory border). In addition, surveying artefacts and historic maps and plans were displayed at the Miles, Chinchilla, Roma, Mitchell and Charleville Shows, attracting more than 4000 visitors.

Museum of North Western Queensland, Mount Isa

Following an earlier agreement between Arts Queensland, the Queensland Museum and the Mount Isa City Council to develop an integrated tourist attraction including the Frank Aston Underground Museum, this museum remained operational until its management was transferred to Mount Isa City Council on 1 May 2002.

Trusteeship of the site was also transferred to the Mount Isa City Council.

The Queensland Museum's fine minerals display *Earth's Treasures*, with the addition of many north-west Queensland

specimens, remains on display in the Frank Aston Museum on long-term loan. The Queensland Museum will continue to support the exhibition program in Mount Isa when required.

The Queensland Museum relinquished the sublease it held from Mount Isa Mines on the John Middlin Centre in Church Street, thus ending the agreement with MIM for management of that museum. With these arrangements in place, the Museum of North Western Queensland ceased to exist. Thanks is extended to the Management Committee for their considerable input over several years.

Museum of Tropical Queensland, Townsville

Some notable triumphs and a number of disappointments and concerns marked the first full year of operation (2000–2001) of the newly expanded Museum of Tropical Queensland (MTQ). Visitation was considerably below expectation, and expenditure significantly exceeded budget. In October 2001, the Board of the Queensland Museum undertook a full review of MTQ's core business requirements and associated costs.

The MTQ Operational Review determined that core business could not be delivered to the satisfaction of the Board, the MTQ Advisory Committee or the Townsville/Thuringowa community with the existing level of resourcing. Further, the Review identified two major business streams –venue management, and research and collections – and determined that for MTQ to reach its full potential as a cultural tourism destination and a centre for international research and collection excellence, each stream must be optimally resourced and managed.

Following concerted and extensive lobbying by the Board, the Government announced a once-

off grant of \$0.3 million in February to redress the revenue shortfall. In May, the Minister for the Arts approved an additional \$0.6 million in annual recurrent funding to enable the recommendations of the Operational Review to be implemented.

Within the tight budget, MTQ continued to provide quality visitor and educational experiences, albeit to a significantly reduced audience (attendance numbers down 25% on the previous year). The bark *Endeavour* moored adjacent to MTQ on its visit to Townsville during July. Museum volunteers acted as guides and joint tickets were sold. In April, the *Windward Bound* moored adjacent to the museum. A temporary exhibit on Matthew Flinders was prepared for the museum foyer and the bookshop ordered additional stock related to the visit. A special function for the crew, hosted by the Townsville Rotary Club, was held in the Great Gallery.

Six Indigenous Trainees undertook a training program at MTQ from March 2001 to March 2002, funded by the 'Breaking the Unemployment Cycle' program within the Department of Employment and Training. All trainees received Certificate Level II in Tourism; four of the trainees advanced to Certificate Level III. On-the-job training was provided by MTQ staff in areas of museum administration, graphic design, exhibition construction and maintenance, marketing, visitor services, education and building management.

Conservator Mr Andrew Viduka was awarded a Fellowship by the Winston Churchill Memorial Trust to survey methods used by large institutions specialising in the conservation of wet archaeological materials. His visiting program (in the second half of 2002) will include the Archaeological Preservation Research Laboratory at Texas A&M University, Canadian Conservation Institute, Conservation Department of the National Museum of Denmark, Vasa Museum, and Mary Rose Trust.

Outlook for 2002–2003

- » Implement the structural reform recommendations of the Operational Review of the Museum of Tropical Queensland.
- » Develop and implement revised business and marketing strategies to increase the number of visitors.



Queensland Museum South Bank, Brisbane

Preliminary planning commenced for the establishment of the main museum building as the re-focussed South Bank campus, with its own management and staffing infrastructure separate from the corporate exhibitions, marketing and publications functions. As the flagship venue for the network, Queensland Museum South Bank will be seen as the gateway to Queensland.

A broad range of 23 cultural and natural history temporary exhibitions were presented, including *Anne Frank*, *Courage to Care*, *Body Art*, *The Art of Decoupage* (community access exhibition), *Under The Sea* (children's program), *From the Steps of Bonegilla* (immigration experience), *Thylacine* and *Native Title Business*.

The temporary exhibition *In The Swim* (a history of Australian competitive swimming) was researched and constructed, and major research and design commenced for the new long-term *Discover Queensland* exhibition. The blockbuster *Australia's Lost Kingdoms* attracted 44,500 visitors. Overall, there was an 11.5% increase in visitor numbers over the previous year.

The Museum was successful in a funding application to the Australia Council for the Arts' *New Audiences* program to develop and evaluate a series of activity

stations for raising awareness and use of the Queensland Museum South Bank by young children – particularly from Chinese and Aboriginal and Torres Strait Islander communities.

Queensland Sciencentre, Brisbane

The Sciencentre received Federal Government and Commonwealth Science Council funding to develop 25 exhibits for presentation at the Commonwealth Heads of Government Meeting People's Centre in Brisbane, as well as host an international science communication symposium in early October. Twenty-nine participants from Commonwealth nations attended the symposium, which was presented jointly by the Sciencentre Director and staff from Cardiff's (Wales) Techniquet Science Discovery Centre. The Commonwealth Science Minister, Dr Ben Ngubane, who is also South Africa's Minister for Arts, Culture, Science and Technology, was present for the latter part of the symposium. Although the postponement of the Commonwealth Heads of Government Meeting limited the number of participants and visitors to the CHOGM People's Centre, the Sciencentre's CommQuest exhibition was by far the most popular presentation.

Two temporary exhibitions were presented: *Women with Wings – Images of Australian Women Pilots* (23 August to 18 November) and *Albert Einstein – Man of the Century* (27 March to 12 May). In addition, eight travelling exhibits were developed and presented at the Ideas at the Powerhouse Festival in August, receiving 15,000 visitors during the four-day event. These new exhibits were then used for Sciencentre promotional activities.



The Sciencentre continued to develop programs to enhance the quality and breadth of experiences available to visitors. *Do and Discover* school holiday programs were presented on six themes during the year, and daily science shows were available for all visitors.

Staffing was stabilised in December with the appointment of permanent full and part-time front of house and operational staff, concluding long-term reliance on casual and temporary staffing. Two recruitment and training programs were conducted for new volunteers, providing a team of 164 volunteers who contributed 3049 days of voluntary work, mainly in the exhibition galleries as Explainers. This extensive community support is very much appreciated by staff who, without the contribution of volunteers, would be unable to deliver the breadth and quality of service expected by visitors.

After considerable lobbying, Education Department funding support was restored, enabling two teachers to be seconded from 2002 to develop curriculum-based learning materials. Student excursion numbers increased by 10% on 2000–01 to 36,881. *The Courier-Mail/Queensland Sciencentre teachers' project book* was distributed to Queensland schools in July. Eleven weekly articles were published in *The Courier-Mail's 'Headstart'* feature during July to September.

Innovations Workshops for Years 9–10 students were developed with funding from the Commonwealth Department of Education, Science and Training. The workshops are presented by Roadshow staff in regional schools and encourage students to envision future farming practices.



In May, the Minister for the Arts announced the relocation of the Sciencentre from its George Street premises to newly refurbished space at the Queensland Museum South Bank. This relocation will lead to the re-invention of the Sciencentre, with the new Sciencentre scheduled to open in late 2003.

Outlook for 2002–2003

- » Maintain a viable Sciencentre that continues to meet visitor expectations whilst planning for its closure in January 2003 and relocation to South Bank.
- » Plan, conceptualise and develop the new Sciencentre at South Bank.
- » Operate the Sciencentre Roadshow in calendar year 2002 as a major outreach program travelling annually throughout Queensland. Prepare to hand over management and operations to the Regional Services Division in early 2003.
- » Maintain an on-going program of temporary exhibitions, daily science shows, public lectures, *Do and Discover* school holiday programs and Sleepovers.

WoodWorks: The Forestry and Timber Museum, Gympie

WoodWorks is the oldest regional campus of the Queensland Museum network and is managed as a joint initiative of the Board of the Queensland Museum and the Queensland Department of Primary Industries.

Throughout the year WoodWorks continued liaison and participation with local community organisations and provided input into local social and cultural heritage issues. In particular, the Blacksmith Training and Personal Development Program developed for at-risk youth within the education system achieved successful outcomes throughout the year.

The Management Committee met four times throughout the year. Major topics of discussion were the installation of additional display material in the *Forestry Depot* working display building, possible provision of an additional display building to house larger working machinery of the Gympie & District Woodworkers Club, the Blacksmith Training and Personal Development

Program for at-risk youth in the museum blacksmith shop, and refurbishment of road display billboards.

Volunteer person days more than doubled, reflecting increasing involvement from members of the Gympie & District Woodworkers Club in the operations of the Museum, particularly on steam sawmill demonstration days. Although general visitation was down on previous years, steam sawmill demonstration days remained popular with average attendance increasing over the past three years. Per capita shop spending has increased strongly and consistently over the past three years, standing at \$2.88 for 2001–02. This represents a 30% increase over the previous year and is a reflection of the quality of product available and the interest of a specific audience.

The Workshops Rail Museum, Ipswich

The Workshops Rail Museum is the largest of the Queensland Heritage Trails Network projects being undertaken by the Queensland Government to celebrate the Centenary of Federation. The Ipswich Railway Workshops at North Ipswich have been home to Queensland Rail since its beginnings in 1865. The site has been continuously used by Queensland Rail since this time for railway workshops. It is being developed as an international standard rail museum, incorporating 5,000 m² of exhibition space and an operating railway workshop where visitors will be able to view work being undertaken on the Queensland Rail Heritage fleet. The Queensland Museum was officially appointed by Government to operate the new Workshops Rail Museum as a campus of the Museum on 11 July 2001.

A total of \$20 million has been allocated to the project, \$15 million from the Queensland Government via Queensland Heritage Trails Network and \$5 million from Queensland Rail. Queensland Rail continued to act as project managers for the development and construction of the museum, working with staff of the Queensland Museum and engaging all contractors and consultants associated with the establishment of the Workshops Rail Museum.

A staff structure was determined and a number of appointments to positions within The Workshops Rail Museum were made to assist with the planning and

development of the museum. Considerable work was undertaken on a range of operational matters including marketing and promotions, the appointment of catering and other services, transfer of Queensland Rail collection material to the Queensland Museum, ticket structure and pricing. The Workshops Rail Museum is scheduled to officially open on 30 August 2002.

Outlook for 2002–2003

- » Official handover and transfer of assets from Queensland Rail to Queensland Museum.
- » Official opening of The Workshops Rail Museum on 30 August 2002.
- » A reunion of Queensland Rail staff who have worked on the site to be held as part of the opening celebrations.
- » Establishment of The Workshops Rail Museum as a 'must see' attraction in the South-east Queensland market.

Leadership

The Museum provided exhibition, management and curatorial expertise to a number of Queensland museums and cultural facilities operated by local authorities and private enterprise, including design and production of exhibitions for the Redcliffe Museum and the Workers Heritage Centre, Barcaldine; exhibition design advice to Australia Zoo and the RACQ; and development of exhibitions and education programs for the Rockhampton Customs House.

A Queensland Museum Australian South Seas Islander staff member accompanied and set up the exhibition *Refined White* – produced by the Australian Sugar Industry Museum – as it toured the State. In addition, staff undertook the complete refurbishment of the University of Queensland Earth Sciences Museum.

Policy Development

The Queensland Museum played an active role in the development of a Queensland whole-of-government Cultural Policy, and took the lead in organising stakeholder meetings to develop an integrated museum policy for the State.

Museum Resource Centre Network

The Museum Development Officer (MDO) project serves community museums, galleries and keeping places across five regions of Queensland.

MDOs provided extensive support for training and professional development of museum staff and volunteers across regional and rural Queensland. More than 50 workshops were delivered on collection management and computer cataloguing, exhibition display and labelling, strategic planning, significant events, marketing and exhibition development, assessing significance, conservation and disaster preparedness.

MDO support was also provided for funding applications and development of numerous Centenary of Federation projects, including 10 professional community museum displays in southern inland Queensland. Celebrations for the International Year of the Volunteer were strongly supported, with a number of grants achieved for community museums and the delivery of the *Willing and Able* volunteer management programs across the State.

Roadshow

The Sciencentre Roadshow toured for 30 weeks, presenting its unique school and community science programs to 34,568 people in rural and regional towns. Each calendar year, a team of four staff present science shows and 60 hands-on exhibits set up as a science centre in community or school halls. *The Courier-Mail* continued its in-kind support of the Roadshow, valued at \$75,000. In addition, AgForce provided valuable community based promotion and support of this program, and Energex and Tarong Energy were cash sponsors.

Two Sciencentre Roadshow staff presented science workshops and shows for all students in the Cape communities of Weipa, Napranum, Mapoon, Aurukun, Lockhart River, Coen, Kowanyama and Pormpuraaw during three weeks in October. This program was provided at the invitation of the communities and was funded by the Commonwealth's PCAP Rural Education Program.

Museum Loans Service

The Queensland Museum Loans Service was the winner of the 2001 Premier's Award for Excellence in Public Sector Management, for Services to Rural and Regional Queensland.

Development over 14 years has led to the Loans Service becoming the world's largest in terms of collection size, transaction and audience numbers, and geographic reach.

During the year, 230 museum loan kits were despatched by rail, courier and ship to 31 distribution centres statewide including the Torres Strait. New distribution centres this year included Coomera, Burleigh Heads and Beaudesert. There was a 10% increase in the number of transactions and a 30% increase in earned gross income for the year. The effectiveness of the service is due in large part to the team of 70 volunteers throughout the State.



Seven new country loans kits were developed together with curriculum support materials. Fifty-two new kits were developed for the South-east Queensland service on the themes Endangered Species, Dinosaur Tracks, Fish, Multicultural Hats, the 1950s, South American Culture, Animal Homes, and New Zealand Life.

Museum Magnet Schools

The Museum Magnet Schools project was established by four organisations – the Queensland Museum, Education Queensland, the Department of Premier and Cabinet and the Smithsonian Institution in Washington DC – to develop classroom-based learning tools that incorporate object analysis and museum processes. It aims to bring together the expertise of museums and schools to enhance the learning experiences of students. Four schools are participating in this pilot project – Marsden State, Railway Estate State, Brisbane State High and Goondiwindi State High.

Student groups visited the South Bank campus to view exhibits and undertake backroom tours, meeting with scientists and exhibition designers. Museum researchers presented specific topics for high school classes. Loans of objects continued to enhance class activities, with the project officer often able to make special arrangements beyond the scope of regular loans. Classes in the four schools developed exhibitions on topics such as *Toys and Energy*, *Family History*, and *Aboriginal Artefacts*.

The Magnet Schools' website underwent a major upgrade to remove the password restrictions and provide public access to teaching resources and project websites. Downloadable documents and activity





sheets were added for teachers, and new pages were developed in conjunction with class exhibitions and museum activities. Other documents were developed to present objects for class study when the objects could not readily be loaned in sufficient quantities.

Web site

Significant effort went into enhancing web-based access to Queensland Museum collections, exhibitions, research and interpretative programs during the year. The Museum Explorer website received 1,907,728 page views (an increase of 58% on the previous year). Navigation of the web site was improved and the new Snakes web feature was implemented.

Popular Publications

Steady sales of the Queensland Museum's outstanding series of environmental-based reference books continued. Since release, the four existing titles – *Wildlife of Greater Brisbane*, *Wild Places of Greater Brisbane*, *Wild Guide to Moreton Bay* and *Wildlife of Tropical North Queensland* – have achieved combined sales of more than 75,000 copies.

The fifth volume, *Plants of Greater Brisbane*, is a lay person's field guide to the flora of Greater Brisbane and will be released in early 2003. This publication is a partnership with the Queensland Herbarium, Greening Australia and the Brisbane City Council, with the latter contributing \$20,000 towards the project.

Research, community consultation, photographic fieldwork and design was finalised for the new publication *Discovery Guide to Outback Queensland*.

This 356-page, full colour guidebook represents the first stage of the Queensland Museum's strategic plan to develop a series of regional guides in partnership with the tourism industry, government and local authorities. This first *Discovery Guide* interprets the cultural and natural heritage of the region from Camooweal and Mount Isa in the north to Cunnamulla and Thargomindah in the south. The book is due for release in late 2002 and is being produced in partnership with the Queensland Heritage Trails Network, which contributed \$100,000 towards the project.

A 72-page booklet, *Kangaroos of Queensland*, is being produced in partnership with the Environmental Protection Agency, which contributed \$20,000 towards production costs. The book is a general guide to 37 species of macropods.



Outlook for 2002–2003

- » Establish the Regional Services Division to coordinate delivery of statewide services.
- » Further develop the Museum Resource Centre Network to ensure equity and access across regional and rural Queensland.
- » Relocate the Queensland Museum Loans Service and improve its delivery service through imaginative use of information technology.
- » Develop new programs for the science Roadshow and investigate a museum Railshow.
- » Expand the Museum Magnet Schools project both within the existing schools and into additional schools.
- » Develop innovative travelling exhibition concepts suitable for community museums and other smaller venues in regional and rural areas.

The Visitor Experience



A 'visit' to the Queensland Museum can be undertaken in a wide variety of ways. It can incorporate a virtual visit via the Museum's website, making a telephone or fax enquiry to the Museum's iCentre, reading a Museum publication, watching a Museum documentary on television or at the cinema, using a loans kit, or visiting one of the eight campuses of the Queensland Museum. In all cases the Museum seeks to create a stimulating experience with a learning outcome.

A primary objective of the Queensland Museum is to provide lifelong learning opportunities that meet the needs and expectations of its broad audience, at all stages of their lives.

The Queensland Museum recognises that a wide range of factors determines the success or otherwise of a museum 'visit'. They may include the physical experience (including the technology and the mode of communication being used) and the feelings and social interactions of the visitor.

The Queensland Museum is committed to continually researching and improving the quality of the visitor experience, and recognises that the needs of its visitors and other users are varied and changing.

Goal

To create an experience that takes Queensland Museum visitors on a lifelong journey of discovery... 'destination understanding'.

Exhibition program development

New or temporary exhibitions were presented at each of the major campuses of the Queensland Museum as well as for a number of museums and cultural facilities operated by Queensland local authorities and private enterprises, described previously. Project management and exhibition construction services were supplied to the developing Workshops Rail Museum on a commercial basis.

Sciencentre

Research and concept development commenced to reposition the Sciencentre as a science museum, incorporating interpretation of elements of the Queensland Museum's heritage collection while retaining the Sciencentre's interactive appeal. This process will accelerate next year with the relocation of the Sciencentre from its current premises to Queensland Museum South Bank.

Inquiry Service

The subjects of public inquiries to the highly popular iCentre generally followed a similar pattern to last year. Again, insects were the most frequent subjects, followed by reptiles, spiders and birds. Together these four groups represented 64% of all inquiries. Media interest in birds imitating

mobile phones (based on reports received by the iCentre) led to this story being featured as one of the *Top 100 Science Stories of 2001* by *Discover* magazine.

Publicity surrounding the discovery of the exotic Red Fire Ants, (*Solenopsis invicta*) increased interest in insects generally. A small display featuring Red Fire Ants was produced in cooperation with the Department of Primary Industries. Combined with the resident colony of bull ants (*Myrmecia*), this raised visitor awareness of the dangers and identification of Fire Ants. Other temporary exhibitions were *Banned* (prohibited imports to Australia) and *Tobacco Pipes*.

Two video microscopes and six dissecting microscopes were purchased by the Queensland Museum Association using funds obtained from the Gambling Community Benefit Fund. They are used by the Museum and community groups for workshops and other educational activities. One video microscope is housed in a robust cabinet and is permanently available to iCentre visitors.

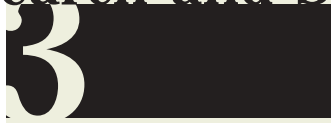
The regular, term-based Wednesday Lunchtime Talks were discontinued in September and replaced by programs organised around major exhibitions. The talks this year were held in conjunction with *Outback Lives*, *Swimming in Focus*, *Australia's Lost Kingdoms* and *Native Title Business*. As part of the iCentre's community service, staff presented talks or workshops to at least 40 conservation, gardening clubs and other community groups.

Lifelong learning

The Sciencentre hosted the inaugural meeting of Queensland Museum Education and Learning staff in April. Sixteen staff participated, sharing information about the variety of education initiatives offered across Queensland Museum campuses and drafting a new Education and Learning Policy. This policy will lead to better collaboration and coordination of



Research and Scholarship



education programs across all Queensland Museum campuses, enabling the strategic development of informal learning experiences relevant to visitors' different life stages.

All campuses made special efforts to reach the 3 to 8-year-old audience through the provision of both formal and informal learning experiences. The Sciencentre's ScienceSpot proved especially popular, with more than 12,400 young children participating in its stimulating learning environment.

An understanding of learning in Museum environments

Queensland Museum South Bank and Sciencentre staff continued research collaboration with Queensland University of Technology as joint partners in a three-year study entitled, 'Young children's interactive and informal learning in museums'. Staff and volunteers at each campus received training in the evaluation of early childhood learning programs.

Outlook for 2002–2003

- » Develop an exhibition master plan that establishes exhibition themes and develops a visitor philosophy for each Queensland Museum campus.
- » Further develop understanding of audiences and informal learning methods.
- » Further develop a strategic and coordinated approach to education programs across all campuses.
- » Develop in-house expertise and knowledge of the ways different ages learn in a museum environment.

The authority with which the Queensland Museum communicates on a variety of subjects is based on the Museum's long-term commitment to high quality scholarship and research. This provides credibility to the Queensland Museum's public programs and differentiates the Museum from other organisations that provide education-based entertainment.

Goal

To increase understanding and appreciation of Queensland's natural and cultural heritage through original research, with particular reference to the State collections.

Strategic focus

Preliminary work commenced on the establishment of strategic priorities that will focus the Queensland Museum's long-term research into areas that are of relevance and benefit to the people of Queensland. This approach will in future provide an appropriate framework in which to organise the Museum's intellectual resources and further develop its distinctive strengths.

As the State is one of the world's most diverse faunal regions, the understanding of Queensland's biodiversity continued as a major focus for research. The Museum's Queensland Centre for Biodiversity (QCB) consolidated a decade of taxonomic research with the development of a catalogue database of sponge species' distributions and investigation of proposed models of tropical Australasian marine bioregions. These models use surrogate data like sponges to infer broader faunal relationships and to identify areas of uniqueness.

Study of one of Queensland's and Australia's most speciose land snail families, *Camaenidae*, provided further evidence of its efficacy as a key surrogate organism for identification and analysis of biodiversity 'hotspots'. This project has produced one of the largest genetic trees of any family of organisms anywhere in the world, involving the analysis of more than 250,000 base pairs of information.

Consultancy work for the Queensland Fisheries Service on the identification of fishes from bycatch of commercial eastern king prawn and scallop fisheries between the 30 and 150 m depth contours yielded at least 16 new fish species. Fishes from this depth range are poorly known, and the specimens will greatly enhance the Queensland Museum's knowledge base and collections. These studies are essential for managing sustainable fisheries and the conservation of the species involved and their habitat.

The Queensland Museum continued its fundamental role in coral reef research and training with the incorporation of the coral collection data into an international computer database on corals, and the delivery of a training course in coral taxonomy and identification for senior Indian zoologists. Coral taxonomy and biogeography research was undertaken in Thailand

Collaboration between the Queensland Museum, the National University of Singapore and the Musée Nationale d'Histoire Naturelle in Paris produced a checklist of some 6525 species of world Brachyura (crabs), with a review of family concepts and new family and subfamily diagnoses. This work is a major advance in knowledge of international marine biodiversity and will be an invaluable tool for Queensland and Australian researchers and ecological managers.

In September, staff excavated the first of many bones of a large 95 million-year-old sauropod dinosaur from near Winton, the largest dinosaur found in Australia. Major excavations continued in June 2002, with the support of corporate sponsorship, and are expected to continue for at least three years. The discovery of 'Elliot' has again positioned the Museum at the forefront of Australian palaeontology.

A high priority was placed on the sourcing of external funding, sponsorship and contract research in areas identified as strategic priorities and in which the Museum has demonstrated strengths.

These included a major multidisciplinary consultancy for Consolidated Rutile Limited on North Stradbroke Island to undertake a pre-mining invertebrate survey of the Enterprise sand-mining lease before its development in 2003. Curators also assisted Environment Australia to develop a set of decision tools to identify and assess marine taxa and marine areas of special heritage value to Australia, and to adjudicate on proposals for potential nomination as special sites or faunas.

Aboriginal Studies staff assisted with the establishment of The *Binangar Language Centre* at the Cobb & Co. Museum campus. Created as a place for the Indigenous community to record, display and celebrate their stories and culture, the centre pays tribute to Indigenous families in Toowoomba and the surrounding areas and highlights the lives of Indigenous pioneers of the region.

Research outputs

The Queensland Museum is committed to the communication of research results in a variety of media and forums appropriate to the content and to the target audience. Four issues of the *Memoirs of the Queensland Museum* were published. These included the proceedings of the international Humpback Whale Conference 2000, a compilation of general

research papers, and an addition to the *Cultural Heritage Series* themed on the Museum's *Queensland 1901* exhibition. In all, 64 original research papers relevant to the Museum's Mission were critically reviewed and published. The *Memoirs* are exchanged with more than 460 Australian and international research institutions, ensuring wide dissemination of the Museum's research outputs. For the first time, abstracts of the *Memoirs* papers were digitised and made available on the Queensland Museum Website

Three staff completed major works based in large part on their research activities at the Museum. Dr John Hooper completed the manuscript of *Systema Porifera. A Guide to the Classification of Sponges*, to be published by Kluwer Academic Plenum Publishers, New York. The book, in 2 volumes and consisting of approximately 1800 printed pages, is fully illustrated with more than 1200 photographs and drawings. This project is the culmination of seven years' collaborative work amongst 45 researchers in 17 different countries. The book describes and illustrates about 680 living genera and more than 1000 fossil genera of sponges and places these taxa in a new, revised systematics framework.

Dr Patricia Mather completed the fourth and final volume of her taxonomic monographs on the Australian Ascidiacea (sea squirts), publishing descriptions and illustrations of 202 species (116 new) in eight genera (one new). In addition, Mr Peter Davie completed the first of two volumes of the *Zoological Catalogue of Australia* (CSIRO Publishing) for the Australian Biological Resources Study, Environment Australia. This work has taken eight years to complete and is the first authoritative compilation of Australian Crustacea since 1880. The first volume covers the commercially important shrimps, prawns, lobsters and yabbies, and lists more than 1200 species from Australian Territorial waters. The second volume, on crabs and their allies, will be published in the second half of 2002.

In collaboration with colleagues from The University of Queensland and the Queensland Parks and Wildlife Service, Queensland Museum staff convened the 47th Scientific Meeting and Possum and Glider Symposium of the Australian Mammal Society at the South Bank campus in July. Some 140 delegates from around Australia attended the highly successful conference.

As well as national and international refereed publications, Queensland Museum researchers provided the authoritative knowledge base for a number of exhibitions. Research was completed for two Queensland Museum exhibitions: *In the Swim – Regulation Liberation Celebration* at South Bank (an Official 2001 Goodwill Games Brisbane Celebration Event), and *Kwong Sang & Co. – a Leading Chinese Firm* at the Cobb & Co. Museum campus, and major research and design commenced for the new long-term *Discover Queensland* exhibition.

The conceptual framework was developed for a new national touring exhibition on parasitology, *Intimate Aliens*, covering eight subtopics: the ubiquity of parasites; intimacy with humans; intimacy with domestic and companion animals; their diversity; their life strategies; our interactions with them; research into therapeutics; history of parasitic research in Australia; and parasites in culture and folklore.

Curatorial leadership was provided to two smaller Queensland Heritage Trails Network projects, the exhibition *A lot on her hands – the history of Australian working women* at the Australian Workers' Heritage Centre in Barcaldine, and interpretation of the Rockhampton Customs House.

A small display, *Koiki Mabo: As Against the Whole World*, was developed to celebrate the 10th anniversary of the Mabo Decision. Staff also curated the community access exhibition, *Yung-a undee Gunggari – Unyan dhagul Yugambeh – Our Country Our Language*, a photographic exhibition highlighting the languages of the Gunggari region of South-west Queensland and the Yugambeh region of South-east Queensland. The exhibition was developed by the Yugambeh Museum and the Nalinga Aboriginal Corporation.



These exhibitions were supported by *Sharing Country*, a nine-week program of Wednesday and Saturday lunchtime talks and documentaries to celebrate Aboriginal and Torres Strait Islander peoples' connection to land and sea.

Collaboration with the 'crocodile hunter' Steve Irwin's Australia Zoo continued with the development of an exhibit featuring skeletons of a 5.7 m Reticulated Python and a pig. The construction of this display is a major feature on the Queensland Museum website.

Collection Development

The Queensland Museum continued an extensive program of acquisition and development of collections that best represent Queensland's natural and cultural heritage, as a basis for public understanding and research.

Marine biology expeditions funded by AstraZeneca R&D Griffith University were carried out at the Ribbon Reefs (outer edge of the northern Great Barrier Reef), Heron Island, Lizard Island and the Coral Sea (Osprey, Bougainville and Holmes Reefs), investigating about 650 separate localities. These expeditions obtained approximately 1300 new samples for the pharmaceutical screening program, as well as re-collecting chemically interesting sponges that are currently in the pre-clinical phase of the drug discovery protocol, one of which needed additional material to proceed to the next phase. In addition, 300 insect samples were collected and supplied for bioprospecting, continuing the search to discover bioactivity from nature.

The entomologists focussed on building the collections of ants from South-east Queensland and in particular the Brisbane metropolitan area. This was due to the increasing use of ants as bioindicators during biodiversity assessments, and the increasing interest in the potential effects of the imported Red Fire Ant incursion on native ant species. Extensive collections of ants from North Stradbroke Island, Karrawatha Forest Reserve and the Doolandella area have been made. This material will be databased and a standardised reference collection of ant taxa established.

Standardised long-term insect trapping was undertaken at 23 new rainforest and vine scrub sites in Central Queensland.

These included the westernmost vine scrubs in the Roma district, many of which were found to be greatly degraded from the effects of high levels of macropods. A major rediscovery occurred of the large wingless dung beetle *Canthonosoma mastersi*, which has not been seen since its original description in 1871 and had been thought to be extinct.

More than 1500 spiders in the collection were identified to species and a further 2000 to genus level. Consultancies increased the collection by about 10,000 species-samples.

Four notable additions were made to the mammal collection:

- » a very significant donation of rare bat specimens from the University of Queensland;
- » one specimen of the rare rodent *Pseudomys novaehollandiae* from Ravensbourne, donated by Queensland Parks and Wildlife Service (QPWS);
- » one specimen of the rare dasyurid marsupial *Pseudantechinus mimulus*, from Selwyn Mine, 140 km south east of Mount Isa;
- » and 14 specimens of the dasyurid marsupial *Antechinus stuartii*, from Girraween National Park, collected by QPWS. Following a recent taxonomic reappraisal of the genus, *A. stuartii* is now considered rare in Queensland.

The Geosciences program received very substantial sponsorship support from Land Rover Australia, which provided a field vehicle for the year, the 'Dino-Defender', facilitating all subsequent fieldwork through 2001-02. Additional support from Final Trim Magazine, Queensland Rail, Boral, Winton Shire Council and many others enabled large-scale excavations of the dinosaur 'Elliot' to begin in June 2002. This huge public project has been created with large community and individual involvement and bodes well for future tourism ventures in Western Queensland.

Isisford Shire Council facilitated preparation of an exquisitely preserved crocodile fossil, which should be complete by the end of 2002. In addition, staff continued to catalogue, sort and integrate the geology collections from The University of Queensland, comprising more than 5 million specimens of rocks, fossils and locality material. Much of this effort was assisted by two federally funded Work for the Dole Programs, each with 25 participants. A large fossil Triassic insect collection has been accessioned into the collection.

In April the Museum received a major donation of more than 830 traditional musical instruments from around the world, with particular emphasis on African, Asian and Pacific cultures. The Charles and Kati Marson Collection adds significantly to the Museum's existing collection and will form the basis of collaborative ethno-musicological projects between the Queensland Museum and the Queensland Conservatorium Griffith University.

Promotion of research

Efforts continued to highlight the Queensland Museum's role as a generator of new knowledge and to obtain recognition for achievements and their value to the community.



Caring for Collections

4!



Mr Scott Hocknull, Assistant Curator (Geosciences Program), was named 2002 Young Australian of the Year, following the November announcement of his receipt of a number of Queensland Achievers awards. As well as an immense personal honour, his appointment and duties have raised the profile of the Queensland Museum and, in particular, its palaeontology program, at a large number of public lectures, visits and speaking engagements throughout 2002.

In 2001, Dr Judith McKay, Senior Curator (Cultures and Histories Program) was one of three Queenslanders to receive an inaugural *Queensland-Smithsonian Fellowship* award. Between February and May 2002 she travelled overseas to record how Queensland has presented itself to the rest of the world for more than a century through exhibits at world expositions.

Overall, media interest in the work of the Museum remained high and many curators were asked to present features for radio, television and print. In addition, staff presented courses and lectures at a number of Queensland universities as well as workshops for the public.

Spiders continue to be a major focus of community interest, and the Museum contributed to public understanding through all television networks including children's programs (*Y* and *Totally Wild*), interviews (ABC, 4KQ, 4QR, 4QG and networks), Australian and international press (eg. *South China Morning Post*, *Sunday Telegraph*), the BBC and Discovery Channel On-line, as

well as the Museum's web pages. The Queensland Museum provides an Australia-wide identification service for spiders involved in spider bites.

The Museum's Garrett steam traction engine made a number of excursions during the year, including a memorable mass presentation of steam traction engines at Jondaryan Wool Shed over nine days in August – an event funded by the Queensland Heritage Trails Network.

Outlook for 2002–2003

- » Develop topics of strategic priority for research, collection development and public products.
- » Establish the Molecular Identities Laboratory (MIL). This new initiative will allow Queensland Museum scientists to undertake molecular research and provide an expanded conduit for gaining external research funding.
- » Promote and increase current and new partnerships and collaborations with key institutions in research and information on the Queensland fauna.
- » Increase the value and scope of the collections through the selective acquisition of collection items related to the research topics.
- » Maintain a standard system for assessing the significance of collections.

Under the *Queensland Museum Act, 1970*, the Board is responsible for the control and management of the natural and cultural heritage collections in its care. In undertaking this central role, the Queensland Museum acknowledges its duty of care and recognises that the issue of access is directly related to caring for the collections. The Museum also recognises its responsibility to provide support to other museums and to historical societies to care for the distributed collections of Queensland.

Goal

To account for, preserve, safeguard and provide access to the collections and associated information in the care of the Museum, balancing long-term preservation with use and available resources.

Collection Care

Conservation staff provided remedial conservation, stabilisation and treatment of objects for display, with non-display objects receiving lower priority. Treatments undertaken included removing corrosion and stabilising metal components of two full length surveyor's chains from the Lands, Mapping and Surveying Museum, and repairing a Reg Grier swimming costume.

Fireworks specialists provided advice on the stability and deactivation of a collection of spiral fireworks and a 'penny bungler' from the Kwong Sang collection. The fireworks were deactivated to ensure that they were safe for both storage and display. Two spiral fireworks were prepared for display at the Cobb & Co. Museum.

More than 100 pieces of fragmented textile material recovered from Brisbane's Victoria Park archaeological project were unravelled, relaxed and dried. The treatment revealed that a number of pieces go to making up a single garment which appears to be a coat made from 'tweed-like' fabric. This is an interesting project because the site is pre 1890s and collections.

the recovered garment represents an example of history that is often lost to later generations because it was considered to be 'rubbish'.

Other Conservation projects included the packing and preparation of Aboriginal and Torres Strait Islander objects for repatriation and the construction of physical supports for bark paintings. A team of honorary staff completed the restoration of the Marshall steamroller.

More than 160 samples of microhymenoptera and flies stored in alcohol were critically point dried to stabilise the specimens.

Collection storage

Millennium Arts Program funding enabled the purchase of a major off-site storage facility in Brisbane. Once design, alternations and refurbishment are completed, the facility will ensure that a significant proportion of the Museum's collections can be consolidated in the one location.

The Queensland Museum continued its ongoing program of facilitating access to the collections for research and study, with a large number of national and international researchers either visiting Museum facilities or borrowing materials.

Repatriation

The return of ancestral remains, burial goods and secret sacred objects was a high priority for the Museum. Progress was monitored by the Queensland Museum Aboriginal and Torres Strait Islander Consultative Committee.

Discussions and consultations with community representatives were held in a number of areas throughout Queensland including: Mapoon, Aurukun, Cairns, Yarrabah, Kuranda, Laura, Cooktown, Wujal Wujal, Mossman, Kowanyama, Pormpuraaw, Injino, Mount Morgan, Cardwell, Innisfail, Townsville, Ayr, Bowen, Mackay, Rockhampton, Bundaberg, Springsure, Emerald, Dalby, St George, Boggabilla and Toowoomba.

The Kowanyama Council of Elders requested that the Museum de-accession four secret sacred objects and these were collected by two Elders in February 2002. A slide show of historical photographs from Kowanyama was shown in their honour.

Three secret sacred objects were returned to the Normanton Community, as requested by the Gkuthaarn Aboriginal Corporation; one secret sacred object was returned to the Girrigun Elders and Reference Group for the Djiru people of Dunk Island; and 31 sets of ancestral remains, one burial object and seven secret sacred objects were returned to communities in the Cairns area.

Requests for the repatriation of ancestral remains, burial goods, and secret sacred objects to communities in Laura, Coen, Bowen, Mapoon, Rockhampton and Cairns were finalised.

Staff consulted with Councils of Elders and Community Councils on Mer Island and Yorke Island in the Torres Strait as part of the Repatriation of Indigenous Cultural Property program. Forty-seven ancestral remains and 38 secret sacred items were returned to Mer Island community ownership and 10 ancestral remains were returned to Yorke Island community ownership. Both communities requested that the Queensland Museum continue to house their ancestral remains and secret sacred items on their behalf until such time as they can be transferred to their home island.

As requested by the Wulgurukaba Aboriginal Corporation and the Traditional Owners of Nellie Bay, Magnetic Island, the Queensland Museum agreed to temporarily house ancestral remains unearthed at Nellie Bay in July at the Museum of Tropical Queensland campus.

The increasing numbers of visits by Indigenous peoples has strengthened the ties between the community and cultural objects held in the Queensland Museum. This has facilitated the exchange of information between staff and community and in turn has brought about an increase in knowledge about the Museum's Indigenous collections and the communities and country to which they belong.

Outlook for 2002-2003

- » Complete design, alterations and refurbishment of the Hendra off-site storage facility, and commence transfer of selected collections and staff to this facility without compromising safe storage or accessibility, including maintaining curatorial standards applied to these collections.
- » Increase the value and scope of collections through the selective acquisition of collections and collection items in areas of strategic priority throughout the State and adjacent territories.
- » Manage the Indigenous collections with sensitivity and respect and increase accessibility.
- » Continue the Return of Indigenous Cultural Property project.
- » Build the capacity for on-line access to the collections.

Information Management and Information Technology

5

The Queensland Museum's position in the knowledge industries depends on its ability to maintain and provide access to the vast storehouse of information in the various Museum databases and collections. The Queensland Museum will be a communicator of authoritative knowledge to local, national and global audiences through the innovative use of new technology in the presentation of its programs and the management of its collections and knowledge bases.

Goal

To enhance the Queensland Museum's capabilities and regional service delivery through the creation of a digital technology environment that will facilitate rapid access to the Museum's knowledge and collection data bases and position the Queensland Museum as an authoritative information provider to a global audience.

IT planning

The Queensland Museum Information and Technology Strategic Plan was developed as part of the corporate strategic planning process to provide direction to the management of the Museum's information and associated technology systems. The plan encompasses all aspects of information management and delivery to state, national and global audiences, and outlines strategies for the development of a network to support the Museum's present and future information and technology needs.

The Queensland Museum IT Strategic Committee met monthly to provide input into ongoing planning and implementation of the Strategic Plan.

Information systems

Planning commenced on the development of *Working Knowledge* – an information management system and associated protocols that will optimise the capture and delivery of knowledge products to targeted audiences. Planning also commenced on the performance standards and criteria required for the selection of a collection management system that will integrate existing databases and create a common interface with the collection, knowledge and image management systems.

Significant effort was directed towards the implementation of the Queensland Government Information Standards as required under the Financial Management Standard 1997. While the Government information standards present particular challenges for smaller agencies to implement, they also present opportunities to participate in increasingly interoperable Government information systems.

The Research Library undertook cataloguing of Library collections in all campuses and in the iCentre to create records in a Queensland Museum-wide library catalogue that was also available on the Museum Website.

Ten thousand records from the Social History database were reviewed and uploaded onto the Australian Museums On line database in July, together with the entire numismatics register.

Network and infrastructure

Possibilities for links between campuses were examined during the year, and a microwave link from South Bank to the Science Centre was established. Options were evaluated for a high speed link between South Bank, the Workshops Rail Museum and Cobb & Co. Museum. A new network was set up at the Cobb & Co. campus to deliver file, print and internet access services to staff.

Cabling infrastructure at all campuses is now generally modern, flexible and scalable. However, with the exception of the Museum of Tropical Queensland, cabling infrastructure has been added to an existing building and capabilities are limited for providing high-speed networking to display areas.

Web site development

Planning commenced for the development of a corporate Queensland Museum homepage providing access to each of the existing campus websites, as well as strategies for integrating these sites into the Museum Explorer site.

Multimedia

The Museum investigated multimedia and show control systems in use in other Australian museums as display techniques. Extensive multimedia will be incorporated in exhibitions under development for the Workshops Rail Museum.

Outlook for 2002-2003

- » Contribute to the development of the Queensland Museum website by continuing to manage the metadata according to Queensland Government Information Standards.
- » Enhance the Library's presence on the Queensland Museum website for researchers.

Marketing 6

Through effective brand management, advertising and public relations, the Queensland Museum will be positioned as a provider of unique educational experiences that entertain and inform. Market research and audience evaluation will ensure that Queensland Museum products and services meet the needs and wants of its visitors.

The establishment and nurturing of strategic partnerships will continue to be at the heart of the Queensland Museum's marketing strategies to increase public awareness and reinforce the values of the Museum.

Goal

To position the Queensland Museum as a provider of enjoyable, stimulating educational experiences and as the Queensland Government authority on cultural and natural heritage.

Strategic approach

Marketing Manager positions were established at each major campus to provide leadership and direction to marketing activities and community relationship building in each location. A two-day workshop of marketing managers was held in April.

The Queensland Museum Corporate Marketing Strategy developed the previous year was implemented. A Marketing Reference Group was established with Board, campus and management representation, together with representatives from key government and corporate entities. This provided a more coordinated and strategic approach to marketing activities across all campuses, as well as providing support for specific campus-based activities.

The Strategic Marketing Manager transferred to the Workshops Rail Museum late in the year to design, develop and implement a strategic marketing plan for the opening and on-going operation of this new museum. This corporate function will continue to be provided from the regional campus.

Brand management

The Museum-wide branding campaign 'You'll be Surprised What's Inside' was introduced to the larger campuses with varying success. South Bank and Cobb & Co. Museum positioned their promotional strategies with the brand.

Understanding the audience

Front and rear-end evaluation was undertaken for all temporary exhibitions at the South Bank campus, with other campuses undertaking more limited evaluation as resources permitted.

Promotional activities

In addition to the extensive local and regional coverage of activities conducted in the campuses, the Queensland Museum achieved significant national media coverage for both the 'Elliot' Dinosaur Dig and the announcement of the 2002 Young Australian of the Year.

The partnership established with Steve Irwin's Australia Zoo linked their website (1.5 million hits per week) to the Queensland Museum website. This link became the second greatest source of referrals after Google, a major search engine.

Outlook for 2002–2003:

- » Continuing strategic marketing support for all Queensland Museum campuses.
- » Development of a fresh and distinctive branding campaign.



Management

The commitment of Government, Board and staff to the achievement of a common vision is critical to the long-term performance of the Queensland Museum. Leadership at all levels is required for this to occur. The empowerment of staff, their financial accountability, and motivation to excel in their appointed field are key priorities for Museum management.

Goal

To create an empowering management environment in which the long-term direction of the Queensland Museum is clearly communicated and appropriate resources are allocated to achieve the identified strategic priorities.

Strategic direction

During the previous year an extensive program of strategic conversations and workshops lead to the collaborative development of a new vision and strategic direction for the Queensland Museum. In setting this future direction, seven strategic priorities were identified:

1. Rejuvenating Queensland Museum South Bank as the flagship venue and the gateway to discover Queensland.
2. Delivering statewide museum services through a regional network of museums and the coordination of a range of unique regional services.
3. Making a significant contribution to reconciliation in the State.
4. Establishing a Queensland Museum Foundation to provide productive links with the corporate sector in relation to funding and the development of strategic partnerships.
5. Addressing critical collection storage and collection management issues.
6. Communicating in the digital world through the implementation of an imaginative information and technology strategy.
7. Identifying areas of low priority and deciding what not to do.

Integrated Network Model

For many, the Queensland Museum has been identified as the South Bank campus in Brisbane. However, Queensland Museum should be seen as the strategic web that sustains and unites all elements of the Queensland Museum network. To achieve this, Queensland Museum corporate and the South Bank campus were conceptually and organisationally separated late in the year under review.

The Queensland Museum is responsible for strategic coordination for a number of functions and responsibilities that are statewide. Such activities include research, collection management, information management, information technology, exhibition and publication development, policy development, corporate public relations, strategic marketing and business development. The primary role of the campuses is that of service delivery and community/audience engagement.

Work commenced to position the Queensland Museum as a quality brand denoting excellence and authority, and to differentiate the Queensland Museum network from other cultural tourism offerings. Over time, Queensland Museum corporate will evolve from that of a largely Brisbane-centric organisation to one that is broadly based throughout the State.

Management environment

As a public institution the Museum is bound by the *Public Sector Ethics Act, 1994* to abide by certain key dimensions of the public interest. The *Code of Conduct of the Queensland Museum* was developed during the year to not only encapsulate good practice, but also reflect Queensland Museum's values in concrete, practical terms. The Code applies to all Museum staff as public officials, whether paid or voluntary and whether permanent, temporary or casual, and is available on the Museum's intranet.

Governance

Management of Queensland Museum Board business was improved during the year through the appointment of a

Secretary to the Board and through review of the existing system of reporting on the basis of performance indicators. Reporting will continue to be reviewed to ensure that the Board has timely access to key indicators of the Queensland Museum's strategic and operational performance.

Equal opportunity in public employment

The EEO Committee continued to meet as required. The Queensland Museum Annual Report 2001-2002 and plan for 2001-2002 has been lodged in terms of the *Equal Opportunity in Public Employment Act, 1992* and an EEO Management Plan for the period 1 July 2001 to 30 June 2002 was implemented.

Freedom of Information

During 2001-2002 the Queensland Museum received one request for documents under the *Freedom of Information Act 1992*. Following approval, the applicant chose not to pursue the request.

A third party to a request received during 2000-2001 sought external review by the Information Commissioner of the Museum's decision to release requested documents. The Information Commissioner conducted the review during the current year and determined that the documents should be released to the applicant.

Whistleblowers Protection Act 1994

No disclosures were received under this legislation during the period 1 July 2001 to 30 June 2002.

Outlook for 2002-2003

- » Operational Plans that seek to achieve the goals outlined in the Queensland Museum's Strategic Plan will be developed for all programs and campuses.
- » Implement a Performance Planning and Review system for all staff.

Resources



The Queensland Museum's current and future operations are critically dependent on the availability and allocation of resources. The challenges in this area include sustained effort to increase the absolute quantity of resources available while achieving optimum allocation to minimise waste, maximise efficiency and provide the best fit with prioritised objectives.

Goal

To increase and optimise the resources available to the Queensland Museum.

Organisational Restructure

The existing organisational structure at the start of the year was more a reflection of the Museum's past than an effective means of implementing the new strategic vision. The achievement of the Museum's vision required the alignment of strategy and organisational structure. Accordingly, the Board approved a review of the organisational structure of the Queensland Museum based around seven major functions;

- » venue management;
- » marketing, public relations and sponsorship;
- » business, commercial development and governance;
- » research and collection;
- » information management and information technology;
- » product development;
- » regional services.

Following extensive staff, Board and management inputs, a new structure was developed based on a model acknowledging that the Queensland Museum is in the knowledge business.

Core business is expressed as knowledge generation (Research Division), knowledge management (Information and Collection Management Division) and knowledge dissemination (Exhibitions and Publications Division).

Core business will be delivered by two major vehicles – the campuses of the Queensland Museum and a coordinated range of regional services (Regional Services Division).

A business management and growth area will incorporate the Business Services Division and the Queensland Museum Foundation.

The new structure will take effect from 1 July 2002.

Review of financial situation

A significant analysis of the issues impacting on the Museum's financial situation was undertaken during the year to better understand the cumulative impact of funding/expenditure trends, the Museum's capacity to increase its own sourced revenue, and the base funding provided to the Queensland Museum campuses.

Comparing 1992–93 as a base year to 2000–01 revealed that:

- » Although the Queensland Museum network expanded significantly during the period, recurrent funding had increased at less than 3% per annum.
- » None of the campuses had received appropriate base funding when they were established.
- » Employee expenses had increased as a result of Enterprise Bargaining Agreements, increases in superannuation guarantees, automatic pay-point increases, promotions, increases in payroll tax, and in response to the expanded Queensland Museum network and services. These expenses were out of proportion to both revenue growth and expenditure on goods and services.
- » Employee expenses had been funded by constraining expenditure on goods and services, which had only increased by 2% since 1992–93.
- » Board reserves had reduced from \$2.9 million in 1996–97 to \$0.7 million in 2000–01 to meet operating expenses and capital expenditure associated with the Museum of Tropical Queensland Stage 2 development and operating losses at the Museum of North Western Queensland.
- » Own sourced revenue had increased by more than 150% since 1992–93, but at an insufficient rate to meet the increasing employee and operating expenses.



Submissions were made to the Cabinet Budget Review Committee in November 2001 and January 2002 seeking increases to the Queensland Museum's recurrent funding. On both occasions the Queensland Museum was instructed to implement strategies to achieve a balanced operating position in 2001–02 and out years.

To achieve this a seven-point business strategy was proposed and subsequently approved by the Minister for the Arts in April:

1. Sale of the Museum's property at Coomera, with Treasury approval for the Queensland Museum to retain the full proceeds of the sale. These proceeds will provide the capital for exhibition redevelopment at Queensland Museum South Bank and the integration of existing collection databases into a single generic system.
2. Reduction in permanent staff through the provision of 15 voluntary early retirements, with the employee cost savings to be directed to operational expenditure.
3. Transfer of Sciencentre programs to the Queensland Museum South Bank campus, resulting in a new Sciencentre and the saving of \$0.6 million per annum in rent and associated expenditure.
4. Establishment of an Aboriginal and Torres Strait Islander Cultural Centre at the South Bank campus, to further contribute to reconciliation in the State.
5. Increased sponsorship and targeted giving through the establishment of the Queensland Museum Foundation.
6. Implementation of the relevant recommendations of the 2001 Operational Review of the Museum of Tropical Queensland.
7. Arts Queensland providing an additional \$0.6 million in recurrent funding through the redistribution of internal allocations.

These strategies will redress the Museum's previously deteriorating financial situation and provide a platform for the Queensland Museum change management process. The implementation of the new organisational structure on 1 July 2002 is an integral part of this ongoing process.

Queensland Museum Foundation

The Board and the Minister approved the establishment of the Queensland Museum Foundation late in the year under review.

The purpose of the Foundation is to increase sponsorship by attracting and managing donations, gifts and bequests, and building mutually beneficial partnerships with major Queensland institutions.

Funding from Board Trust funds has been dedicated for the first two years of operation of the Foundation, and an experienced fund-raiser was appointed to the position of Foundation Director. An interim Steering Committee was established to provide direct input from the Board to the implementation of this initiative

Outlook for 2002–2003

- » Sale of the Museum's Coomera property to provide capital funding to initiate the new directions and strategic priorities.
- » Establish high profile pilot projects.
- » Establish 'profit centre' management accounting procedures, where appropriate, for individual projects/activities or work units.

Improve project management skills and capacity within staff through training.



Appendices

A Appendices

Functions and Powers of the Board

Queensland Museum Act 1970

12 Functions of board

(1) The functions of the board shall be—

- (a) the control and management of the museum and of all natural history, historical and technological collections, and other chattels and property contained therein; and
- (b) the maintenance and administration of the museum in such manner as will effectively minister to the needs and demands of the community in any or all branches of the natural sciences, applied sciences, technology and history, associated with the development of the museum as a museum of general science and to this end shall undertake—
 - (i) the storage of suitable items pertaining to the study of natural sciences, applied sciences, technology and history, and exhibits and other personal property; and
 - (ii) the promotion of scientific and historical research; and
 - (iii) the provision of educational facilities through the display of selected items, lectures, films, broadcasts, telecasts, publications and other means; and
 - (iv) the operation of workshops for the maintenance and repair of exhibits and other things; and
 - (v) any other action which in the opinion of the board is necessary or desirable; and
- (c) the control and management of all lands and premises vested in or placed under the control of the board; and
- (d) the management, operation and control of the aerodrome constructed or to be constructed at the Queensland Museum branch, Coomera; and

- (e) to perform the functions given to the board under another Act; and
 - (f) to perform functions that are incidental, complementary or helpful to, or likely to enhance the effective and efficient performance of, the functions mentioned in paragraphs (a) to (e); and
 - (g) to perform functions of the type to which paragraph (f) applies and which are given to the board in writing by the Minister.
- (2) In performing the function mentioned in subsection (1)(b), the board is to have regard to the desirability of providing for the storage of items and the promotion of research relating to Queensland.
- (3) Before giving a function for subsection (1)(g), the Minister must consult with the board about the function.

14 General powers

- (1) For performing its functions, the board has all the powers of an individual and may for example—
- (a) enter into arrangements, agreements, contracts and deeds; and
 - (b) acquire, hold, deal with and dispose of property; and
 - (c) engage consultants; and
 - (d) appoint agents and attorneys; and
 - (e) charge, and fix terms, for goods, services, facilities and information supplied by it; and
 - (f) do anything else necessary or desirable to be done in performing its functions.
- (2) Without limiting subsection (1), the board has the powers given to it under this or another Act.
- (3) The board may exercise its powers inside and outside Queensland, including outside Australia.
- (4) In this section—“power” includes legal capacity.

Members of Board Sub-Committees

Queensland Museum Audit Committee

Mr H. Greenway, FCA, ACIS	Chairman
Ms A. Jones, BDesSt	Member
Mr A. Dougherty (QAO)	Observer
Dr I. Galloway, BSc(Hons), PhD, MAgSt	Observer
Mr G. Innes, BCom	Observer
Mr W. Leaver (CAA)	Observer
Mr M. Wakefield	Observer

Queensland Museum Aboriginal & Torres Strait Islander Consultative Committee

Dr R. Anderson OAM <i>(ATSIAB Chairman, representing Brisbane Elders Committee, Quandamooka Land Council, Quandamooka Elders)</i>	Chairman
Mrs P. O'Connor, BA <i>(representing Yugambeh Museum, Beenleigh)</i>	Secretary
Mr M. Williams, MPhil (Qual) <i>(ATSI Studies Unit, Qld University)</i>	Member
Mrs J. Richardson <i>(representing TSI)</i>	Member
Ms I. Ryder <i>(representing Nalingu Aboriginal Corporation)</i>	Member
Mr R. Sandy	Member
Ms C. Wall <i>(Arts Queensland)</i>	Observer
Ms Patricia Thompson <i>(ATSIC Commissioner)</i>	Observer
Mr I. Delaney <i>(ATSIC Councillor)</i>	Observer
Mr T. Robinson <i>(representing QIWG)</i>	Observer
Mrs N. Withnall, BA, LLB	ex-officio Member
Dr I. Galloway, BSc(Hons), PhD, MAgSt	ex-officio Member

**Queensland Museum Foundation
Steering Committee**

Dr I. Galloway,
BSc(Hons), PhD, MAgSt Chairman

Lady Edwards, AM Member

Mr H. Greenway, FCA, ACIS Member

Dr C. Mittelheuser, AM,
BSc(Hons), PhD, HonDPhil Member

Mrs J. Wilson Secretary /Director

**Members of Campus
Management Advisory
Committees**

Cobb & Co Museum, Toowoomba

Mr W. O'Brien, OBE Chairman

Dr I. Galloway,
BSc (Hons), PhD, MAgSt Vice-Chairman

Ms M. Andersen Member

Mr A. Cardell, LLB Member
(until 27 Nov 2001)

Ms A. Cardell, BA, MA Member
(from 26 Feb 2002)

Mr G. Healy Member

Ms J. Malmstrom Member
(from 31 Aug 2001)

Dr D. Robinson,
BSc(Hons), PhD Member

Mr T. Schwenke, JP Qual, MEd,
BEd, DipT, ADEng, OMIE Aust Member

Mr I. Waples,
MIE (Aust), CPEng, LGE Member

Mrs D. Tranter, OAM,
BA, MLitSt, CT(Sec),
GradDipCED Secretary/Director

**Museum of North Western Queensland,
Mount Isa**

Mr S. Wollaston Chairman

Dr P. Jell, BSc, PhD Vice-Chairman

Ms K. Campbell Member

Mrs F. Donovan Member

Mr L. Henderson Member

Mrs S. McGrady Member

Mrs A. Miller Member

**Museum of Tropical Queensland,
Townsville**

Mr K. Brazier, LS FIS Acting Chairman
(to December 2001)

Dr I. Galloway,
BSc(Hons), PhD, MAgSt Vice-Chairman

Mr J. Lyons, BEc, FCPA,
FTIA, FAICD, AFAIM, ACA Member

Professor B. Moulden,
BA(Hons), PhD Member

Emeritus Professor H. Choat,
BSc(Hons), PhD Member

Mr N. Gertz Member

Ms G. Mackay,
BA(Hons), PSM, FACEA Member

Mr A. Linning Member

Mr M. Stoneman Member

Dr C. Wallace,
BSc(Hons), PhD Secretary/Director

Dr P. Arnold
BSc(Hons), MSc, PhD Observer

Queensland Sciencentre, Brisbane

Professor D. Nicklin,
BScApp, BEcon, PhD, AO Chairman

Dr I. Galloway,
BSc(Hons), PhD, MAgSt Vice-Chairman

Mr R. Bryan, BSc(Hons) Member

Mr I. Hiley, BCom, AAUQ, FCA Member

Professor A. Lister,
MA, DipCompSci, CEng, FACS Member

Professor I. Lowe,
BSc, DPhil, AO Member

Dr B. Piscitelli, MEd, PhD Member

Dr D. Robinson,
BSc(Hons), PhD Member

Mr T. Sherman, BE Member

Sir Bruce Watson, BE(Elec),
BCom, HonDEng. Member

Dr G. Potter, MSc (Hons),
PhD, GradDipEd Secretary/Director

Mr P. Parkinson, DipT,
BEdSt, MEnvEd, JP(Qual) Observer

**WoodWorks: The Forestry and Timber
Museum, Gympie**

Mr T. Willett,
DipFor, BSc(For) Chairman

Dr D. Robinson,
BSc(Hons), PhD Vice-Chairman

Cr M. Venardos Member

Mrs D. Horne Member

Mr G. Smith Secretary/Manager

Annual Performance Indicators

	2001-2002	2000-2001	1999-2000
A. Access			
1. USE OF SERVICES			
(a) Queensland Museum South Bank			
Gallery visitors	353,489	314,858	312,499
Group visitors (schools)	40,834	38,661	43,424
Venue Total	394,323	353,519	355,923
(b) Queensland Sciencecentre			
Gallery visitors	96,485	111,830	96,623
Group visitors (schools)	36,881	33,510	39,637
Venue Total	133,366	145,340	136,260
(c) Museum of Tropical Queensland			
Gallery visitors	49,391	66,553	13,868
Group visitors (schools)	5,388	6,289	998
Venue Total	54,779	72,842	14,866
(d) Cobb & Co.			
Gallery visitors	22,896	13,864	14,186
Group visitors (schools)	5,210	4,622	4,078
Venue Total	28,106	18,486	18,264
(e) Woodworks			
Gallery visitors	4,095	4,798	4,840
Group visitors (schools)	1,820	1,699	2,123
Venue Total	5,915	6,497	6,963
(f) Lands, Mapping and Surveying			
Gallery visitors (est)	1,020	840	2,950
Group visitors (schools)	100	100	50
Venue Total	1,120	940	3,000
(h) Museum of North Western Queensland			
Visitors (up to March 2002)	7,868	12,290	20,838
Total Gallery Visitors	625,477	609,914	556,114

	2001-2002	2000-2001	1999-2000
2. USE OF ALL SERVICES			
a) All Venues			
(Including travelling display visitors, public enquiries, professional enquiries, loans audience, web site page views, mail and e-mail enquiries, Educational Outreach audience)			
Total Units of Service	2,896,469	2,579,552	1,831,079
3. EXPENDITURE PER UNIT OF SERVICE			
(a) All Venues			
Per unit of service costs relating to:			
Government Grant	\$3.80	\$4.20	\$5.61
Total Expenditure	\$5.48	\$6.05	\$8.08
4. NUMBER OF NEW LOANS MADE			
(a) All Venues			
Scientific Users	12,227	23,777	20,676
Educational Users	9,731	5,534	7,143
Library Users	1,286	1,624	2,243
Total New Loans	23,244	30,935	30,062
5. VOLUNTEER INVOLVEMENT - ALL VENUES			
Number of volunteer person days	7,480	7,573	6,181
Honorary staff appointed as:			
Hon. Associates	12	13	13
Hon. Research Fellows	27	28	26
Hon. Consultants	21	19	22
Hon. Docents	240	228	231
Hon. Administrative Assistants	2	11	1
Hon. Technical Assistants	289	277	269
Hon. Medical Officer	0	1	1
Hon. Dive Master	0	1	1
Total Honorary Staff	591	578	564
6. PUBLIC GROUP USAGE - ALL VENUES			
Learned societies	358	167	284
Community education	575	289	350
Business	407	62	296
Other	256	35	14
Total	1,596	553	944

	2001-2002	2000-2001	1999-2000
B. Visitor care			
VISITOR SATISFACTION - ALL VENUES			
% planning revisit	89	91	90
Frequency of visits (%):			
first visit	56	56	57
one previous	19	18	18
two previous	13	13	13
> two previous	12	13	12
Visit duration > 2 hours	48	46	47

C. Display

DISPLAY PROJECTS COMPLETED - ALL VENUES

Permanent displays opened (sq metres)	487	347	1,700
Number of temporary displays	31	23	17
Temporary displays (sq metres)	8,167	3,877	3,002

D. Financial Management

1. INCOME GENERATION - ALL VENUES

	\$ (%)	\$ (%)	\$ (%)
Entrance fees	1,167,000 (+5.7%)	1,104,000 (+30.65)	845,000 (-0.01)
Interest	203,000 (+13.4%)	179,000 (-31.9)	263,000 (+23.0)
Shop merchandising receipts	689,000 (+01.3)	680,000 (+9.5)	621,000 (-41.4)
Research grants	450,000 (+0.4%)	448,000 (+57.7)	284,000 (-25.1)
Cash donations/Sponsorships*	383,000 (-28.8%)	538,000 (-6.9)	578,000 (+9.32)
Consultancy	640,000 (-1.1%)	647,000 (+15.9)	558,000 (+75.7)
Café operating**	84,000 (+180%)	30,000 (-22.4)	39,000 (+34.1)
Temporary exhibitions	434,000 (+193%)	148,000 (-34.2)	225,000 (-79.0)
Other***	1,547,000 (-10.5%)	2,482,000 (+108.9)	1,188,000 (+47.7)
Total	5,557,000 (-11.2)	6,256,000 (+36.0)	4,601,000 (-12.4)

Notes:

*Cash figure; **Cobbs Coffee Shop opened October 2001; ***Includes \$1,719,000 grant from QHTN for construction of Cobb & Co extensions in 2000-01.

2. SHOP INCOME

	\$	\$	\$
Queensland Museum South Bank	394,050	352,190	379,827
Queensland Sciencecentre	115,762	103,908	105,701
Museum of Tropical Queensland	108,378	144,501	18,915
Cobb and Co.	30,863	25,254	35,033
WoodWorks	17,271	14,427	15,666
North Western Queensland	22,772	39,518	65,753

	2001-2002	2000-2001	1999-2000
3. SHOP INCOME PER VISITOR	\$	\$	\$
Queensland Museum South Bank	1.00	1.00	1.07
Queensland Sciencecentre	0.87	0.71	0.78
Museum of Tropical Queensland	1.98	1.98	1.27
Cobb and Co.	1.10	1.37	1.92
WoodWorks	2.92	2.22	2.25
North Western Queensland	2.89	3.22	3.16
4. SELF-GENERATED INCOME			
% of non-capital grant	41.8	39.7	37.6
5. RELATIVE EXPENDITURE ON SALARIES			
Salary as % of non-capital grant	81.8	85.0	84.7
Salary as % of total expenditure	54.3	57.1	50.8

E. Collections Management

Increase in value of collections	\$3,090,375	\$9,955,000	\$9,496,000
Purchase cost of new collections	\$0	\$42,304	\$32,333
Number of items conserved	2,228	1,698	3,553
Number of items audited	117,428	251,749	72,039
Number of items accessioned	57,005	45,251	61,739

F. Scholarship

1. RESEARCH PROJECTS

Number of research publications	124	137	133
Pages of Memoirs produced	1,055	790	920
Number of published acknowledgments	151	133	164
Number of learned staff presentations	207	224	179
Localities investigated	353	458	394
Research programs commenced	38	42	53
Research programs completed	49	24	57
Species or items yielding new information	43,765	28,781	24,670

2. SCHOLARLY PUBLICATIONS MOVEMENT

Memoirs volumes exchanged	1,000	1,404	1,401
---------------------------	-------	-------	-------

2001-2002 2000-2001 1999-2000

G. Human Resources

1. PERMANENT : TEMPORARY STAFF (ALL VENUES) AND % OF TOTAL PAID STAFF IN:

Directorate	2:0 (0.1%)	2:0 (1%)	2:0 (1%)
Biodiversity Program	27:17 (17%)	32:18 (18%)	37:11 (17%)
Cultures & Histories Program	10:11 (8%)	19:6 (9%)	22:9 (16%)
Museum Services	46:40 (32%)	46:38 (31%)	48:33 (25%)
Admin and Support	6:0 (2%)	7:0 (3%)	6:0 (2%)
Campuses	30:37 (25%)	27:40 (25%)	27:37 (23%)
Marketing	21:19 (15%)	12.24 (13%)	14:31 (16%)
Museum Foundation	0:1 (0.03%)		
Total	142:125	145:126	156:121

2. HONORARY STAFF - ALL VENUES

Number of paid staff : honorary staff	267:591	271:578	277:564
% paid staff : honorary staff	31:69	32:68	33:67

3. PERMANENT STAFF TURNOVER

Biodiversity Program	5	2	3
Cultures & Histories Program	6	2	5
Museum Services	5	7	4
Admin and Support	1	0	0
Campuses	1	2	2
Marketing	5	3	5

4. ABSENTEEISM

Sick leave occasions	551	454	529
Hours of sick leave	8,250	6,353	6,661
Hours of workers compensation	145	153	950

5. TRAINING

% of gross salary expenditure	0.4	0.4	0.45
-------------------------------	-----	-----	------

	2001-2002	2000-2001	1999-2000
H. Building Maintenance			
COSTS- BUILDING MAINTENANCE AND RUNNING COSTS	\$	\$	\$
Queensland Museum South Bank	1,690,428	1,635,312	1,508,670
Queensland Sciencecentre	637,772	612,235	621,635
Museum of Tropical Queensland	533,566	507,029	290,638
Cobb and Co.	61,753	39,033	30,873
Coomera	15,600	24,391	19,112
North Western Queensland	15,373	15,807	25,366
75 Grey Street*	117,384	157,423	151,454
West End Store	168,902	167,595	173,956

*Note: Part premises sub-leased 2001-02.

I. DECENTRALISATION - ALL VENUES

Number of travelling displays	2	3	3
Venues serviced regionally	51	7	4
Days of field work	1,308	827	1,829

J. Building Management

WORKPLACE HEALTH AND SAFETY

Number of accidents - (Staff / Public):

Queensland Museum South Bank	17/15	6/3	14/5
Queensland Sciencecentre	1/23	2/14	4/18
Museum of Tropical Queensland	0/0	2/0	0/3
Cobb & Co.	0/0	1/0	0/0

K. Administrative Functions – All venues

DELAYS IN RESPONDING

Ministerial/departmental letters unanswered after 2 weeks	1%	1%	2%
Accounts unpaid after 4 weeks	3.0%	3.5%	3.8%

Publications

- ALVAREZ, B. BERGQUIST, P.R. & BATTERSHILL, C.N. 2002. Taxonomic revision of the genus *Latrunculia* Du Bocage (Porifera: Demospongiae: Latrunculidae) in New Zealand. *New Zealand Journal of Marine and Freshwater Research* 36: 151-184.
- ARNOLD, P.W. 2002. Irrawaddy dolphin *Orcaella brevirostris*. Pp. 652-654. In Perrin, W.F., Wursig, B. & Thewissen, H. (eds) *Encyclopedia of marine mammals*. (Academic Press).
- BAEHR, B. & JOCQUE, R. 2001. Revisions of genera in the *Asteron*-complex (*Araneae: Zodariidae*): new genera *Pentasteron*, *Phenasteron*, *Leptasteron* and *Subasteron*. *Memoirs of the Queensland Museum* 46: 359-385.
- BAEHR, B. & RAVEN, R.J. 2002. The ant spiders (*Araneae: Zodariidae*) of Australia. *Biologue* April 2002: 8-9.
- BEASLEY, I., ARNOLD, P.W. & HEINSOHN, G. 2002. Geographical variation in skull morphology of the Irrawaddy dolphin, *Orcaella brevirostris* (Owen in Gray, 1866). Pp. 15-34. In Jefferson, T.A. & Smith, B.D. (eds) *Facultative freshwater cetaceans of Asia: their ecology and conservation*. *The Raffles Bulletin of Zoology Supplement* 10.
- BIRTLES, R.A. & ARNOLD, P.W. 2002. Dwarf minke whales in the Great Barrier Reef. Current state of knowledge May 2002. (CRC Reef Research Centre, James Cook University: Townsville).
- BIRTLES, R.A., VALENTINE, P., CURNOCK, M., ARNOLD, P. & DUNSTAN, A. 2002. Incorporating visitor experiences into ecologically sustainable dwarf minke whale tourism in the northern Great Barrier Reef. CRC Reef Research Centre Technical Report 42, James Cook University.
- BRUCE, A.J. 2001. *Leander manning* sp. nov., a new palaemonine shrimp from Western Australia (Crustacea, Decapoda, Palaemonidae), with a review of the Indo-West Pacific species of the genus *Leander* Desmarest, 1849. *Records of the Western Australian Museum* 21: 71-81.
- BRUCE, A.J. 2001. A re-description of *Periclimenaeus tridentatus* (Miers, 1884), based on specimens from Port Essington, Northern Territory, and a note on *P. hecate* (Nobili, 1904) (Crustacea: Decapoda: Pontoniinae), with a key for the preliminary identification of the tunicate-associated species of *Periclimenaeus Borradaile*. *Journal of Natural History* 36: 565-584.
- BRUCE, A.J. 2001. A re-examination of *Periclimenaeus trispinosus* and *Periclimenaeus orbitospinatus* Bruce, 1969 (Crustacea: Decapoda: Pontoniinae). *Zoologische Mededelingen, Leiden* 75 (9): 147-158.
- BURWELL, C.J. 2001. Grand tour of Grand Terre. *News Bulletin of the Entomological Society of Queensland* 29: 204-210.
- CAMERON, S.L., ADLARD, R.D. & O'DONOGHUE, P.J. 2001. Evidence for an independent radiation of endosymbiotic litostome ciliates within Australian marsupial herbivores. *Molecular Phylogenetics and Evolution* 20: 302-310.
- CAMERON, S.L., O'DONOGHUE, P.J. & ADLARD, R.D. 2001. Four new species of *Macropodinium* (Ciliophora: Litostomatea) from Australian wallabies and pademelons. *The Journal of Eukaryotic Microbiology* 48: 542-555.
- CAMERON, S.L., O'DONOGHUE, P.J. & ADLARD, R.D. 2002. *Macropodinium*: Endosymbiotic ciliates from Australian macropodid marsupials. *Memoirs of the Queensland Museum* 48: 49-69.
- CAMPBELL, J. 1901: the first year of Queensland's Itinerant Teaching Service. *Memoirs of the Queensland Museum, Cultural Heritage Series* 2(2): 237-50.
- CHEN, C.A., WALLACE, C.C. & WOLSTENHOLME, J. 2002. Analysis of mitochondrial 12S RNA gene supports the two-clade hypothesis of evolutionary history of scleractinian corals. *Molecular Phylogenetics and Evolution* 23: 137-149.
- CHISHOLM, L.A., MORGAN, J.A.T., ADLARD, R.D. & WHITTINGTON, I.D. 2001. Phylogenetic analysis of the Monocotylidae (Monogenea) inferred from 28S rDNA sequences. *International Journal for Parasitology* 31: 1253-1263.
- CIASULLO, L., CASAPULLO, A., CUTIGNANO, A., BIFULCO, G., DEBITUS, C., HOOPER, J., GOMEZ-PALOMA, L. & RICCIO, R. 2002. Renieramide, a cyclic tripeptide from the Vanuatu sponge *Reniera* n. sp. *Journal of Natural Products* 65: 407-410.
- CLIFFORD, H.T. 2002. A new Devonian fern, *Fanningopteris wyattii*, from Queensland. *Memoirs of the Queensland Museum* 48(1): 71-77.
- CLIFFORD, H.T. & DETTMANN, M.E. 2002. A winged fruit from the Tertiary of Queensland. *Memoirs of the Queensland Museum* 48(1): 79-83.
- COUPER, P.J. 2001. Book review, *The Herpetofauna of New Caledonia*. *Herpetofauna* 31(2): 139-140.
- COUPER, P.J., AMEY, A.P. & KUTT, A.S. 2002. A new species of *Ctenotus* (Scincidae) from Central Queensland. *Memoirs of the Queensland Museum* 48(1): 85-91.
- COVACEVICH, J. 2001. Minefield of emotion. Letter to the Editor. *Wildlife Australia Magazine*. 38(2): 33.
- COVACEVICH, J.A., COUPER, P.J. & AMEY, A.P. 2002. 'Snakes' website <http://www.qmuseum.qld.gov.au/features/snakes/> (Queensland Museum: Brisbane).
- CZECHURA, G.V. 2001. Safe at home. *Living Planet* 5: 20-31.
- CZECHURA, G.V. 2001. Scratchings and Rustlings. *Wildlife Australia* 38(3): 30.
- CZECHURA, G.V. 2001. Scratchings and Rustlings. *Wildlife Australia* 38(4): 30.
- CZECHURA, G.V. 2002. Scratchings and Rustlings. *Wildlife Australia* 39(1): 16.
- CZECHURA, G.V. 2002. Scratchings and Rustlings. *Wildlife Australia* 39(2): 30-31.

- DAMBORENEA, M.C. & CANNON, L.R.G. 2001. The mosaic of the epidermal syncytia in *Didymorchis* sp. (Didymorchidae, Temnocephalida) from South America. *Belgian Journal of Zoology* 131 (suppl.): 167-171.
- DAMBORENEA, M. C. & CANNON, L.R.G. 2001. On Neotropical temnocephalans. *Journal of Natural History* 35(8): 1103-1118.
- DALL, W. 2001. Australian species of Aristeidae and Benthescymidae (Penaeoidea: Decapoda). *Memoirs of the Queensland Museum* 46(2): 409-441.
- DAVIE, P.J.F. 2002. Crustacea: Malacostraca: Phyllocarida, Hoplocarida, Eucarida (Part 1). In, Wells, A. & Houston, W.W.K. (eds) *Zoological Catalogue of Australia*. Vol. 19.3A. (CSIRO Publishing: Melbourne).
- DAVIES, V.E. & LAMBKIN, C. 2001. A revision of *Procambidgea* Forster & Wilton, (Araneae: Amaurobioidea; Stiphidiidae). *Memoirs of the Queensland Museum* 46: 443-459.
- EWART, A., 2001. Emergence patterns and densities of cicadas (Hemiptera: Cicadidae) near Caloundra, south-east Queensland. *Australian Entomologist* 28(3): 69-84.
- EWART, A. & POPPLE, L.W., 2001. Cicadas, and their songs, from south-western Queensland. *The Queensland Naturalist* 39(4-6): 52-71.
- GOOLSBY, J.A., BURWELL, C.J., MAKINSON, J. & DRIVER, F. 2001. Investigation of the biology of Hymenoptera associated with *Fergusonina* sp. (Diptera: Fergusoninidae), a gall fly of *Melaleuca quinquenervia*, integrating molecular techniques. *Journal of Hymenoptera Research* 10: 163-180.
- HOCHBERG, R. 2002. Two new species of *Turbanellidae* (Gastrotricha, Macrotrichida) from eastern Australia. *New Zealand Journal of Marine and Freshwater Research* 36(2): 311-319.
- HOCHBERG, R. & CANNON, L.R.G. 2001. A new species of *Geysztoria* (Platyhelminthes, Rhabdozoa, Dalyelliidae) from a freshwater lake in southern Queensland, Australia. *Zootaxa* 11: 1-8.
- HOCHBERG, R. & CANNON, L.R.G. 2002. Two new freshwater rhabdozoa, *Australdalyella* n. gen. and *Haplodidymos* n. gen. (Platyhelminthes) from Queensland, Australia. *Zootaxa* 44: 1-15.
- HOCKNULL, S.A. 2002. Comparative maxillary and dentary morphology of the Australian dragons (Agamidae: Squamata): A framework for fossil identification. *Memoirs of the Queensland Museum* 48(1): 125-145.
- HOOPER, J.N.A. 2002. Snapshot of the Australian marine faunal collections, and the national tropical biodiversity research effort. In, *The Census of Marine Life in South East Asia*. (Intergovernmental Oceanographic Commission Workshop Report (UNESCO): Paris).
- HOOPER, J.N.A. & KENNEDY, R.A. 2002. Small-scale patterns of biodiversity in sponges (Porifera), from the Sunshine Coast, southeast Queensland. *Invertebrate Systematics* 16: 1-17.
- HOOPER, J.N.A., KENNEDY, J.A. & QUINN, R.J. 2002. Biodiversity 'hotspots', patterns of richness and endemism, and taxonomic affinities of tropical Australian sponges (Porifera). *Biodiversity and Conservation* 11(5): 851-885.
- HUGALL, A., MORITZ, C., MOUSSALLI, A. & STANISIC, J. 2002. Reconciling palaeodistribution models and comparative phylogeography in the Wet Tropics rainforest land snail *Gnarosiphia bellendenkerensis* (Brazier, 1875). *Proceedings of the National Academy of Sciences (Philadelphia)* 99: 6112-6117.
- INSLEY, J. 2002. Time travelling teens. *Artefact* 7(1): 12.
- ITANI, G., DAVIE, P.J.F. & TAKEDA, M. 2002. Taxonomic notes on *Acmaeopleura balsii* Shen, 1932 and *A. toriumii* Takeda, 1974 (Crustacea, Brachyura, Grapsidae) from Japanese waters. *Bulletin of the National Science Museum, Series A (Zoology)* 28(1): 43-50.
- JAKES, K.A., O'DONOGHUE, P.J., MONROE, M. & ADLARD, R.D. 2001. Hemiprotozoa of freshwater turtles in Queensland. *Journal of Wildlife Diseases* 37:12-19.
- JAKES, K.A., O'DONOGHUE, P.J. & ADLARD, R.D. 2001. Phylogenetic relationships of *Trypanosoma chelodinae* and *T. binneyi* from Australian tortoises and platypuses inferred from small subunit rDNA analyses. *Parasitology* 123: 483-487.
- JANETZKI, H. & PATERSON, R.A. 2001. Aspects of humpback whale *Megaptera novaeangliae* calf mortality in Queensland. *Memoirs of the Queensland Museum* 47(2): 431-435.
- JOHNSON, J.W. 2001. Review of Draft Lungfish Scientific Report 4 July 2001. 16 pp. In, Brooks, S.G. & Kind, P.K., *Ecology and demographics of lungfish (Neoceratodus forsteri) and general fish communities in the Burnett River, Queensland with reference to the impacts of Walla Weir and future water infrastructure development*. (Queensland Department of Primary Industries).
- JUST, J. 2001. Bathyal Joeropsididae (Isopoda: Asellota) from South-eastern Australia, with description of two new genera. *Memoirs of Museum Victoria* 58(2): 297-333
- JUST, J. 2001. *Platyprotus phyllosoma*, gen. nov., sp. nov., from Enderby Land, Antarctica, an unusual Munnopsidid without natatory pereopods (Crustacea: Isopoda: Asellota). *Memoirs of Museum Victoria* 58(2): 335-345
- JUST, J. 2001. New species of *Mexicope*, stat. nov. and *Ianthopsis* from Australia and a rediagnosis of *Acanthaspidiidae* (Isopoda: Asellota). *Invertebrate Taxonomy* 15: 909-925.
- JUST, J. 2001. Review of *Pseudopleonexes* Conlan, 1982, with a new species from Australia (Crustacea: Amphipoda: Amphithoidae). *Records of the Australian Museum* 54: 31-40.
- KEHRAUS, S., KÖNIG, G.M., WRIGHT, A.D. & WÖRHEIDE, G. 2002. Leucamide A: a new cytotoxic heptapeptide from the Australian sponge *Leucetta microraphis*. *Journal of Organic Chemistry* 67(14): 4989-4992.
- KLEEMAN, S.N., ADLARD, R.D. & LESTER, R.J.G. 2002. Detection of the initial infective stages of the protozoan parasite *Marteilia sydneyi* in *Saccostrea glomerata* and their development through to sporogenesis. *International Journal for Parasitology* 32: 767-784.
- KOTT, P. 2001. The Australian Ascidiacea. Part 4, Aplousobranchia (3), Didemnidae. *Memoirs of the Queensland Museum* 47(1): 1-407.
- KOTT, P. 2001. The Australian Ascidiacea. Parts 1-3, Corrigenda. *Memoirs of the Queensland Museum* 47(1): 409-410.
- KOTT, P. 2002. A complex didemnid ascidian from Whangamata, New Zealand. *Journal of the Marine Biologists Association of the United Kingdom* 82(4): 625-628.

- KOTT, P. 2002. The genus *Herdmania* Lahille, 1888 (Tunicata, Ascidiacea) in Australian waters. *Zoological Journal of the Linnean Society* 134: 359-374.
- KOTT, P. 2002. *Culeolus herdmani* Sluiter, 1904 (Ascidiacea, Tunicata) from the northwestern Australian continental slope with an overview of the genus. *Records of the Western Australian Museum* 21(1): 63-70.
- LAMPRELL, K., STANISIC, J. & CLARKSON, P. 2001. Spondylids from the Mediterranean Sea and Atlantic Ocean (Mollusca: Bivalvia: Spondylidae). *Memoirs of the Queensland Museum* 46: 611-622.
- LAMPRELL, K., STANISIC, J. & CLARKSON, P. 2001. Some spondylids from the Pacific Ocean. (Mollusca: Bivalvia: Spondylidae). *Memoirs of the Queensland Museum* 46: 623-628.
- LEDERER, R. ADLARD, R.D. & O'DONOGHUE, P.J. 2002. Severe pathology associated with protozoal schizonts in two Pied Currawongs (*Strepera graculina*) from Queensland. *Veterinary Record* 150: 520-522.
- LUTER, C., WORHEIDE, G. & REITNER, J. 2002. *Ospreyella depressa* gen. n. sp. n., a new thecideid brachiopod from submarine caves of Osprey Reef (Queensland Plateau, Coral Sea, Australia). *Journal of Natural History*. Online, DOI 10.1080/00222930110120971.
- MCCASKIE, G. 2002. Developing displays in community museums. *Artefact* 7(1): 14-15.
- MCKAY, J.M. 'Only a gilded show': Australian gold at international exhibitions 1851-1901. In Cardell, K. & Cumming, C. (eds) *A world upside down: cultural change on Australia's goldfields 1851 - 2001*. Canberra: Humanities Research Centre, Australian National University, Humanities Research Centre monograph series no.14:147-63, 66-68.
- MCKAY, J.M. Selling Queensland at the Glasgow International Exhibition of 1901. *Memoirs of the Queensland Museum Cultural Heritage Series* 2(2): 189-96.
- MCKAY, J.M. John Flynn Place, Cloncurry: telling a great Australian story. *Artefact* 6(2): 12-13.
- MILLER, K., ALVAREZ, B., BATTERSHILL, C., NORTHCOTE, P. & PARTHASARATHY, H. 2001. Genetic, morphological and chemical divergence in the sponge genus *Latrunculia* (Porifera: Demospongiae). *Marine Biology* 139: 235-250.
- MCDONALD, J.I., HOOPER, J.N.A. & MCGUINNESS, K.A. 2002. Environmentally influenced variability in the morphology of *Cinachyra australiensis* (Carter, 1886) (Porifera: Spirophorida: Tetillidae). *Journal of Marine and Freshwater Research* 53: 79-84.
- MONTEITH, G.B. 2001. C.T. White Memorial Lecture. Gayndah, lungfish and beetles - a fishy tale. *Queensland Naturalist* 39(1-3): 5-32.
- MONTEITH, G.B. & BURWELL, C.J. 2001. Report on insects collected in New Caledonia, Sept 15- Dec 1, 2000. (Queensland Museum: Brisbane).
- MONTEITH, G.B. & COOK, D.J. 2002. Natural resource study. 3. Remnant vegetation insect survey. Pp. 30-36. Queensland Department of Primary Industries. Brigalow Research Station Technical Report 2000-2001.
- MORITZ, C., RICHARDSON, K.S., FERRIER, S., MONTEITH, G.B., STANISIC, J., WILLIAMS, S.E. & WHIFFIN, T. 2001. Biogeographical concordance and efficiency of taxon indicators for establishing conservation priority in a tropical rainforest biota. *Proceedings of the Royal Society of London (B)* 268: 1875-1881.
- MURRAY, M.D., PALMA, R.L., PILGRIM, R.L.C. & SHAW, M.D. 2001. Ectoparasites of Australian, New Zealand and Antarctic birds. Pp. 1261-1263. In Marchant, S. & Higgins, P.J. (eds) *Handbook of Australian, New Zealand and Antarctic Birds*. Vol. 5. Tyrant-flycatchers to Chats. (Melbourne).
- NEWMAN, L.J. 2002. A new polyclad flatworm symbiont associated with colonial ascidians from Lizard Island, northern Great Barrier Reef, Australia. *Memoirs of the Queensland Museum* 48: 169-172.
- NG, M.C. 2002. Catalogue of meteorites, tektites and associated material from the University of Queensland collection. *Memoirs of the Queensland Museum* 48(1): 173-180.
- PATERSON, R.A. 2001. Exploitation of humpback whales, *Megaptera novaeangliae*, in the South West Pacific and adjacent Antarctic waters during the 19th and 20th Centuries. *Memoirs of the Queensland Museum* 47(2): 421-429.
- PATERSON, R.A. PATERSON, P. & CATO, D.H. 2001. Status of humpback whales, *Megaptera novaeangliae*, in east Australia at the end of the 20th Century. *Memoirs of the Queensland Museum* 47(2): 579-586.
- PATERSON, R.A. PATERSON, P. 2001. A presumed killer whale (*Orcinus orca*) attack on humpback whales (*Megaptera novaeangliae*) at Point Lookout, Queensland. *Memoirs of the Queensland Museum* 47(2): 436.
- PAVEY, C.R., BURWELL, C.J., GRUNWALD, J., MARSHALL, C.J. & NEUWEILER, G. 2001. Dietary benefits of twilight foraging by the insectivorous bat *Hipposideros speoris*. *Biotropica* 33: 670-681.
- POPPLE, L.W. & EWART, A., 2002. Cicadas Hemiptera: Auchenorrhyncha: Cicadidae. In Horton, H. (ed.) *A Brisbane bushland: the history and natural history of Enoggera reservoir and its environs*. (The Queensland Naturalists' Club Inc.: Brisbane). Handbook No. 3: 113-118.
- PRICE, G.J. 2002 *Perameles sobbei* sp. nov. (Marsupialia, Peramelidae) a Pleistocene bandicoot from the Darling Downs, south-eastern Queensland. *Memoirs of the Queensland Museum* 48(1): 193197.
- QUINN, R.J., DE ALMEIDA LEONE, P., GUYMER, G. & HOOPER, J.N.A. 2002. Australian biodiversity via its plants and marine organisms. A high-throughput screening approach to drug discovery. *Pure Applied Chemistry* 74(4): 519-526.
- ROBINS, R. 2001. Queensland Museum, Brisbane. Pp. 64-70. In Cochrane S. (ed.) *Aboriginal Art Collections: highlights from Australia's public museums and galleries*. (Fine Art Publishing: Sydney 2001).
- ROBINS, R. & CONNELLY, M. 2001. Post European development and its implications for Aboriginal cultural heritage management on Currawinya National Park. Pp. 15-18. In Page, M., Evenson, C. & Whittington, E. (eds) *Research needs for managing changed landscapes in the Hungerford/Eulo Region*. (University of Queensland: Gatton).

- RAVEN, R.J., STUMKAT, K. & GRAY, M.R. 2001. Revisions of Australian ground-hunting spiders: I. *Amauropelma* gen. nov. (Araneomorphae: Ctenidae). Records of the Western Australian Museum Supplementary Series 64: 187-227.
- RAVEN, R.J. & STUMKAT, K.S. 2002. *Pteroneta* Deeleman-Reinhold and a remarkable sympatric *Clubiona* (Clubionidae: Araneomorphae: Arachnida) in northern Australia. *Memoirs of the Queensland Museum* 48(1): 199-206.
- RAVEN, R.J. 2002. Book review: Spiders of New Zealand and their worldwide kin. *Australian Zoologist* 32: 168-170.
- REITNER, J., WÖRHEIDE, G., LANGE, R. & SCHUMANN-KINDEL, G. 2001. Coralline Demosponges - a geobiological portrait. In: Mori, K., Ezaki, Y. & Sorauf, J., (eds) Proceedings of the 8th International Symposium on Fossil Cnidaria and Porifera, September 1999, Sendai. *Bulletin of the Tohoku University Museum* 1: 219-235.
- REITNER, J. & WÖRHEIDE, G. 2002. Coralline Sponges - Pinacophoran sponges with secondary calcareous basal skeleton. In: Flügel, E. & Freiwald, A. (eds) Reef evolution. (Springer Verlag: Berlin).
- ROWE, C., STANISIC, J., DAVID, B. & LOURANDOS, H. 2001. The helicid land snail *Pleuropoma extincta* (Odhner, 1917) as an environmental indicator in archaeology. *Memoirs of the Queensland Museum* 46: 741-770.
- SHAW, M.D. 2001. Mites on Australian parrots and in their nests. *Eclectus* 9: 5-7.
- SHAW, M.D. 2002. Mites. In Horton, H. (ed.) A Brisbane bushland: the history and natural history of Enoggera Reservoir. (Queensland Naturalist's Club: Brisbane).
- SHAW, M.D., MURRELL, A. & BARKER, S.C. 2002. Low intraspecific variation in the rRNA internal transcribed spacer 2 (ITS2) of the Australian Paralysis Tick *Ixodes holocyclus*. *Parasitology Research* 88: 247-252.
- SHERIDAN, R. 2002. For loan: saplings & rotten residents. *Artefact* 7(1): 12.
- STANISIC, J. 2001. Invertebrates as bioindicators. Many are caught but few are chosen. *Wildlife Australia* 38(3): 32-33.
- STANISIC, J. 2001. Land snails' surprising secrets. A temperate existence in a tropical climate. *Wildlife Australia* 38(4): 32-33.
- STUART-FOX, D.M., SCHNEIDER, C.J., MORITZ, C. & COOPER, P.J. 2001. Comparative phylogeography of three rainforest-restricted lizards from mid-east Queensland. *Australian Journal of Zoology* 49: 119-127.
- TASDEMIR, D., MANGALINDAN, G.C., CONCEPCION, G.P., VERBITSKI, S.M., RABINDRAN, S., MIRANDA, M., GREENSTEIN, M., HOOPER, J.N.A., HARPER, M.K. & IRELAND, C. 2002. Bioactive Isomalabaricane Triterpenes from the Marine Sponge *Rhabdastrella globostellata*. *Journal of Natural Products* 65: 210-214.
- THIEL V., BLUMENBERG, M., HEFTER, J., PAPE, T., POMPONI, S., REED, J., REITNER, J., WÖRHEIDE, G. & MICHAELIS, W. 2002. A chemical view on the most ancestral Metazoa - lipid chemotaxonomy of glass sponges (Hexactinellida, Porifera). *Naturwissenschaften* 89(2): 60-66.
- THIES, D. & TURNER, S. 2001. Jurassic actinopterygian from Queensland. *Alcheringa* 25: 381-386.
- TURNER, S. 2001. IGCP Project No. 406 Circum-Arctic Palaeozoic vertebrates 1996-2000 (On Extended Time in 2001). *The Australian Geologist* 121: 22-23.
- TURNER, S. 2001. Review of 'New perspectives on the old red sandstone'. In Friend, P.F. & Williams, B.P.J. (eds) Geological Society Special Publication No.180. *The Australian Geologist* 121: 43.
- TURNER, S. 2002. Peigi Wallace, 1944-2001. Obituary. Geological Society of London Annual Report.
- THOMPSON, G.I. 2001. Australian workshop report. Guild of Natural Science Illustrators Newsletter (7): 8-9.
- THOMPSON, G.I. 2001. Retro-illustration. Colour etching a butterfly. Guild of Natural Science Illustrators Newsletter (9): 1,3-9.
- VAN DYCK, S. 2001. What a rat. *Nature Australia* 27(1): 22-23.
- VAN DYCK, S. 2001. Slater peccadillos. *Nature Australia* 27(2): 20-21
- VAN DYCK, S. 2001. Sex to die for. *Nature Australia* 27(3): 20-21.
- VAN DYCK, S. 2002. Book review, 'Field Guide to the Mammals of Australia'. *Wildlife Australia* 38(4): 6.
- VAN DYCK, S. 2002. Fowl play. *Nature Australia* 27(4): 20-21.
- VAN DYCK, S. 2002. Morphology-based revision of *Murexia* and *Antechinus* (Marsupialia: Dasyuridae). *Memoirs of the Queensland Museum* 48(1): 239-330.
- VOLK, P. Introduction to Information technology for small museums. *Museum Methods (A Practical Manual for Managing Small Museums)*, March 2002, Section 11.1.
- WALLACE, C., Suharsono, C. & Richards, Z. 2001. Regional distribution patterns of *Acropora* and their use in the conservation of coral reefs in Indonesia. *Indonesian Journal of Marine and Coastal Resources* 4(1): 40-58.
- WALTER, D.E. & SHAW, M.D. 2002. First record of the mite *Hirstiella diolii* Baker (Prostigmata: Pterygosomatidae) from Australia, with a review of the mites found on Australian lizards. *Australian Journal of Entomology* 41: 30-34.
- WILSON, S.K. 2001. Costume dress. *Living Planet* 6: 76-84.
- WILSON, S.K. 2002. A day in the life of a dune. *Australian Geographic Magazine* 66: 92-99.
- WHITTINGTON, I.D., CORNELLIE, S., TALBOT, C., MORGAN, J.A.T. & ADLARD, R.D. 2001. Infections of *Seriola quinqueradiata* Temminck & Schlegel and *S. dumerili* (Risso) in Japan by *Benedenia seriola* (Monogenea) confirmed by morphology and 28S ribosomal DNA analysis. *Journal of Fish Diseases* 24: 421-425.
- WÖRHEIDE G. & HOOPER, J.N.A. 2002. New species of Calcareonea (Porifera: Calcarea) from cryptic habitats of the southern Great Barrier Reef (Heron Island and Wistari Reef, Capricorn-Bunker Group, Australia). *Journal of Natural History*. Online, DOI 10.1080/00222930110096041.
- WÖRHEIDE, G. & HOOPER, J.N.A. 2002. Calcareous sponges (Porifera: Calcarea) provide clues for conservation biology of the Great Barrier Reef World Heritage Area. *ABRS Biologue* 26: 10-11.
- WÖRHEIDE G., HOOPER, J.N.A. & DEGNAN, B.M. 2002. Phylogeography of western pacific *leucetta 'chagosensis'* (porifera: calcarea) from ribosomal dna sequences: implications for population history and conservation of the great barrier reef world heritage area (australia). *Molecular ecology* 11.

Grants Won

Grantee	Project	From	Amount
Dr R. Adlard	Development of a disease zoning policy for marsteiliosis to support sustainable production, health certification and trade in the Sydney Rock Oyster	Fisheries Research & Development Corporation & Fisheries Resource Research Fund	\$100,000
Dr R. Adlard & Dr M. Peirce	Characterisation of blood borne parasites of Australian birds	Australian Biological Resources Study	\$4,000
Dr R. Adlard & Dr L. Cannon	Development of parasitology display <i>Intimate Aliens</i>	Australian Society for Parasitology	\$10,000
Dr R. Adlard & Dr L. Cannon	Development of parasitology display <i>Intimate Aliens</i>	Visions of Australia	\$75,000
Dr B. Baehr & Dr R. Raven	Australian Ant Spiders (<i>Araneae, Zodariidae, Storeninae</i>): biodiversity of the Australian fauna, taxonomy, systematics and phylogeny of Australian species	Australian Biological Resources Study	\$40,000
Dr L. Cannon	Taxonomy of Australian freshwater Microturbellaria	Australian Biological Resources Study	\$17,000
Dr L. Cannon (with Dr D. Blair et al.)	Coevolution of an ancient symbiosis: Temnocephalans and crayfish	Australian Research Council	\$45,000
Cobb & Co. Museum	Stage 2 Extensions	Queensland Heritage Trails Network	\$135,847
Cobb & Co. Museum	Cavalcade of Transport Official Opening of Stage 2	Department of the Premier Centenary of Federation	\$18,000
Cobb & Co. Museum	Subsidise museum entry for local residents	Toowoomba City Council	\$50,000
Cobb & Co. Museum	Development of Coach Stop Discovery Centre	Perpetual Trustees J.S. Love Trust	\$15,000
Cobb & Co. Museum	Think Link project	Department of Transport & Regional Services	\$40,967
Cobb & Co. Museum	Support for Binangar Aboriginal Language Centre	Rotary Club of Toowoomba City	\$6,360
Cobb & Co. Museum	Establish volunteer program	International Year of the Volunteer, Commonwealth grant	\$2,000
Cobb & Co. Museum	Adult Learners' Week, W H Groom project	Department of Employment & Training	\$500
Cobb & Co. Museum	Theatre Sports for school students	NRMA Pty Ltd	\$500
Cobb & Co. Museum	<i>Broken Links</i> Exhibition	Kumbumerri Aboriginal Corporation for Culture	\$5,309
Cobb & Co. Museum	Getting kids Involved Education Kit for Community Museums	Toowoomba & Golden West Regional Tourist Association	\$5,000

Grantee	Project	From	Amount
Dr A. Cook	Planning of palaeotourism events	Tourism Queensland	\$10,000
Dr A. Cook	Work for the Dole administration	Dept of Employment Workplace Relations and Small Business	\$83,000
Dr A. Cook	Fossil preparation	Isisford Shire Council	\$19,300
Dr A. Cook	Lark Quarry Project	Queensland Heritage Trails Network	\$24,000
Dr B. Crozier	History of Australian Working Women exhibition	Queensland Heritage Trails Network	\$445,250
Dr B. Crozier	Sharing Their Legacy travelling exhibition	Department of Veteran Affairs	\$40,000
Dr V. Davies	New spiders (Araneae: Amaurobioidea) from Australian forests	Australian Biological Resources Study	\$10,000
Inquiry Centre	Purchase microscopes	Gaming Community Fund	\$14,710
Dr J. Just	Australia's Paramunnidae marine Isopoda (Asellota, Janiroidea)	Australian Biological Resources Study	\$15,315
Mr R. Kohout	Towards a complete treatment of the Australian ants of the genus <i>Polyrhachis</i> Fr. Smith. Part 1 – Systematic revision of the subgenus <i>Hagiomyrma</i> Wheeler	Australian Biological Resources Study	\$500
Mr R. Kohout	Attendance as a committee member at the 3rd AneT Workshop and Seminar (International Network for the Study of Asian Ants) in Hanoi, Vietnam	Government of Japan	\$US1,200
Mr R. Kohout with Drs Anderson, Majer, Heterick & O'Dowd	Australian Ants for Species Bank	Australian Biological Resources Study	\$6,000
Loans Service	South Sea Islander kits	Multicultural Arts	\$5,000
Dr P. Mather	Taxonomy of the Ascidiacea	Australian Biological Resources Study	\$35,000
Dr G. Monteith	Survey and mapping of rainforest insects	Cooperative Research Centre for Tropical Rainforest Ecology and Management	\$5,000
Dr J. McKay	Displays at John Flynn Place	Cloncurry Shire Council	\$65,000
Dr J. McKay	Smithsonian Fellowship, to research potential exhibitions	Smithsonian Institute, Washington	\$22,000
MTQ Maritime Archaeology	To conserve and protect shipwrecks and associated material as a cultural resource of the nation; obtain support of an informed public; and promote the protection and preservation	Historical Shipwrecks Program, Environment Australia	\$106,005
MTQ Maritime Archaeology	Install moorings at the Yongala Historic Shipwreck site	National Moorings Program, Environment Australia	\$110,400
MTQ Directorate	Media grant La Luna Youth Arts project 'Deep Harvest' performance relating to Deep Sea research	Australia Council for the Arts	\$17,205

Grantee	Project	From	Amount
MTQ Marketing	Advertising for La Luna Youth Arts project 'Deep Harvest'	Qld Arts Council	\$750
MTQ Education	Children of the Federation display	Centenary of Federation Qld	\$9,305
MTQ Conservation (administered through James Cook University)	The significance of in-situ corrosion potential measurements for the management of maritime archaeology sites	Environmental Protection Agency Qld, Community and Cultural Heritage Incentive Program	\$18,000
MTQ Indigenous Trainees Program	Training contracts for indigenous trainees to complete a Certificate II in Tourism	Dept. of Employment and Training	\$124,155
Museum Services Program	Discover Queensland exhibition	Queensland Heritage Trails Network	\$300,000
Museum Services Program	'Plants of Greater Brisbane' publication	Brisbane City Council	\$20,000
Museum Services Program	'Guide to Outback Queensland' publication	Queensland Heritage Trails Network.	\$100,000
Dr G. Potter	CommQuest 2001 exhibition and Science Communication symposium - CHOGM	Department of Premier and Cabinet	\$94,680
Ms O. Robinson	Sharing Country program	Arts Queensland, Dept. of Natural Resources and Mines, Dept. of Premier and Cabinet	\$20,000
Dr S. Van Dyck	Monitoring the status of the False Water-rat <i>Xeromys myoides</i> at Coomera Waters	Austcorp International Pty Ltd	\$16,280
Dr C. Wallace	Checklist of Anthozoa of Australia for the Australian Biological Information Facility (ABIF)	Australian Biological Resources Study	\$12,800
Dr C. Wallace	Some questions of relevance to the Indo-Pacific Centre of diversity for marine organisms	Australian Research Council	\$27,500
Dr C. Wallace	Capacity building for Indian coral taxonomy	AMSAT	\$17,500
Dr G. Wörheide & Dr J. Hooper	Biodiversity of the Great Barrier Reef calcareous sponges	Australian Biological Resources Study	\$30,000

Consultancies

Grantee	Project	From	Amount
Dr R. Adlard	Diagnosis of commercial rock oyster disease	Oyster Research Advisory Committee & NSW Fisheries	\$24,500
Dr C. Burwell	Re-collecting of the 'Mallee Monster' Akapala sp (Eucharitidae) in Mt Isa and Alice Springs	University of California, Riverside	\$3,403
Dr C. Burwell	Survey of ants in the Doolandella area	Biodiversity Assessment and Management Pty Ltd	\$4,000
Dr C. Burwell	Invertebrate survey of 'Enterprise Mine Site' on North Stradbroke Island in conjunction with Malacology, Lower Entomology and Arachnology	Resource Strategies Pty Ltd	\$2,500
Dr C. Burwell	Identification of parasitoids reared from Evippe caterpillar leaf-ties on Mesquite	CSIRO Entomology	\$455
Dr C. Burwell	Identification of insect contaminants	Golden Circle Pty Ltd	\$100
Mr P. Couper & Dr A. Amey	Data sales and specimen identifications	Miscellaneous	\$6,749
Mr G. Czechura & Mr P. Olsen	Seasonal survey of raptors	Brisbane City Council	\$9,034
Mr G. Czechura	Species profile of raptors	Brisbane City Council	\$829
Mr P. Davie	Identification of benthic crustaceans	James Cook University, and Dept. of Natural Resources	\$2,640
Mr P. Davie	Database searches	Miscellaneous	\$955
Dr J. Hooper	Bioprospecting for sessile marine invertebrates	AstraZeneca R&D Griffith University	\$195,528
Dr J. Hooper	Introduced Marine Pests survey, taxonomic identifications, Gladstone Harbour	University of Central Queensland	\$11,318
Dr J. Hooper	Introduced Marine Pests survey, taxonomic identifications, Cape Flattery	James Cook University	\$2,200
Dr J. Hooper	Introduced Marine Pests survey, taxonomic identifications, Launceston	Aquenal Pty Ltd	\$2,000
Dr J. Hooper	Introduced Marine Pests survey, taxonomic identifications, Townsville	James Cook University	\$8,242
Dr J. Hooper	Biodiversity Library project	DPI Agency for Food and Fibre Sciences	\$22,000
Dr J. Hooper	Taxonomic study of bioactive New Caledonian sponges	IRD Noumea	\$3,950
Dr J. Hooper	Taxonomic identifications of deep-sea sponges	Univ. Sunshine Coast	\$1,800
Mr J. Johnson	Review of Draft Lungfish Report	Sinclair Knight Merz per Burnett Water Corp.	\$3,520

Grantee	Project	From	Amount
Mr J. Johnson	Identification of Eastern King prawn and scallop bycatch fishes	Qld Fisheries Service	\$1,320
Mr J. Johnson	Queensland Noxious Fishes Committee	Qld Fisheries Service	\$2,552
Mr J. Johnson	Data searches, certifications & identifications	Miscellaneous	\$2,669
Dr J. McKay	Lecture at SE Qld Small Museums Conference	Shire of Landsborough Historical Society	\$150
Dr G. Monteith & Dr C. Burwell	Supply of insect bioprospecting samples	AstraZeneca R&D Griffith University	\$39,687
Dr G. Monteith	Supply of insect material for DNA analysis	University of Nebraska	\$400
Dr G. Monteith	Supply of insect and centipede material for DNA analysis	Australian Museum	\$750
Dr G. Monteith	Contribution to New Caledonian field work	Schlinger Foundation	\$970
Dr G. Monteith	Identification of insect food contaminants	Golden Circle Ltd.	\$200
Dr G. Monteith	Assessment of EIS report	Noosa Shire Council	\$136
Dr G. Monteith	Identification of termites	Alphapharm Pty Ltd	\$70
Dr G. Monteith	Contribution to New Caledonian field work	E.C. Zimmerman	\$5,000
Museum Services Program	Rockhampton Customs House Interpretive Centre	Queensland Heritage Trails Network / Roots Projects Australia.	\$122,350
Museum Services Program	Exhibition for Barcaldine Workers Heritage Centre	Queensland Heritage Trails Network / Barcaldine Workers Heritage Centre	\$325,455
Museum Services Program	Exhibition assistance	Redcliffe Museum	\$11,378
Museum Services Program	Manufacture replica	Queensland Art Gallery	\$1,300
Museum Services Program	Publishing advice	Southeast Qld Regional Water Quality Management Strategy	\$3,500
Drs R. Raven, M. Harvey & B. Baehr	Interactive key to Australian spider subfamilies	Australian Biological Resources Study	\$15,000
Dr R. Raven	Identification of Tasmanian World Heritage spiders.	Tasmanian Department of Primary Industries & Environment	\$9,500
Dr R. Raven & Dr B. Baehr	Australian spider taxonomy workshop	Keebun	\$2,400
Dr R. Raven	Legal opinions on spider bite	Miscellaneous	\$1,300
Dr R. Raven	Spiders of Warra LTER, Tasmania	Tasmanian Dept of Forestry	\$1,000
Dr R. Raven	Information on Australian spiders	Discovery Channel	\$540
Dr R. Raven	Keynote speaker at White-tailed spider bite conference	'Eucanol'	\$600
Dr R. Raven	'Spiders that bite' presentation	Queensland Medical Laboratories	\$250
Drs J. Stanistic, R. Raven, B. Baehr, G. Monteith, & C. Burwell	Terrestrial invertebrate fauna study, Enterprise Project	Consolidated Rutile Ltd	\$40,200

During the year the Queensland Museum engaged the following consultants.

Consultant	Project	Cost (\$)
Conserve Documentation	Stabilisation and mounting of bark petition for storage and display	4,050
Daniel Lear	Palaeontological replica production	1,090
Department of Employment	Expert advice on a Freedom of Information application	1,740
Environmetrics	Competitor analysis and recommended admission pricing for the Workshops Rail Museum	9,300
Helen Gregory	Research for Workers Heritage Centre, Barcaldine	3,675
John Lyneham	Corporate public relations advice	12,249
Museum Marketing	Research and product development for establishment of the Workshops Rail Museum retail outlet	4,000
Positive Solutions	Review of the Queensland Museum Corporate Marketing Strategy	2,760
Queensland University of Technology	Investigation of teacher and student learning during a visitor to the Sciencentre Roadshow	5,000
S W Salisbury	Palaeontology services	7,121
The Mirii Centre	Repatriation of Aboriginal ancestral remains and secret sacred objects	44,000
University of The Sunshine Coast	Research for Concept Statement for the Macarthur Chambers, Queensland Heritage Trails Network	5,000
	Total	\$99,985

Overseas Travel

Name of Officer	Country Visited	Period	Purpose	Costs	
				Queensland Museum	Other
Dr G. Monteith & Dr C. Burwell	New Caledonia	30 October – 29 November	Field collecting of insects in New Caledonia to augment the Queensland Museum's holdings of this unique fauna which is being utilised in gaining understanding of the evolution of the Queensland rainforest fauna.	Nil	\$5,354
Dr R. Adlard	Republic of Palau	23 November – 9 December	Field collecting as part of a larger study to determine the composition, biogeography and evolution of the parasite communities of tropical marine fishes. The work has strong relevance to Queensland where parallel and comparative studies allow exploration of broad patterns of parasite abundance in the tropical Indo-Pacific region.	Nil	\$2,009 – Australian Research Council grant
Dr J. Hooper	Phuket, Thailand	8 – 14 October	Presentation of report on the status of Australian tropical marine biodiversity data collection, analysis and communication, at the UNESCO International Oceanographic Commission Census of Marine Life Workshop	\$137	\$2,490 – UNESCO & AstraZenica
Ms G. Jay	Taipei	8 – 13 November	International Council of Museums Marketing and Public Relations Committee representative at the official opening of the Museum of World Religions	Nil	\$9,050 – Museum of World Religions
Dr J. McKay	New Zealand, USA, UK	24 February – 12 May	2001 Queensland-Smithsonian Fellowship to research potential exhibitions	\$1,000 for photographs and photocopying.	\$22,000 – Queensland-Smithsonian Fellowship
Dr C. Wallace & Dr P. Muir*	Thailand	20 February – 17 March	Collaborative research on east and west coast staghorn coral distributions	Nil	\$3,366 – Australian Research Council grant
Dr P. Jell	Nanjing, China	21 May – 16 June	Collaboration with geologists of the Nanjing Institute of Geology and Palaeontology, Chinese Academy of Sciences, on projects of Queensland and international significance	\$1,581	

*Non-departmental employee

Temporary Exhibitions

Title	Duration	Description
Cobb & Co. Museum		
Federation: Queensland's Story	26 January – 4 June	A Queensland perspective on debates leading up to Federation and the part played by W.H. Groom, the convict who became a Federal MP.
Museum of Tropical Queensland		
Scissors Paper Stone	22 June – 15 July	An exhibition of works by paper and natural fibre artists.
Cliff Robinson	4 June – 16 July	Display of original wood burning paintings by Cliff Robinson
Ikabana Group	18 – 22 July	Traditional Japanese bamboo and flower arrangements.
Children of the Federation	August	Collection of children's art work in conjunction with the 'Centenary of Federation'
Hooked	7 – 30 September	Contemporary crochet art work.
Splendor in the Depths	7 – 30 September	An exhibition of marine painting and photography by Stefan Beatie (painter) and Dave Stewart (photographer)
Forging the Nation	12 October – 3 February	Australian War Memorial
Bush Lives	13 February – 17 March	An exhibition about eight bush families:
History of the Picnic Bay Surf Life Saving Club	20 March – 16 April	75th year Anniversary
Something Old / Something New	1 June – 24 June	An internal exhibition to celebrate MTQ's Birthday.
Refined White	26 June – 28 July	How South Sea Islanders came to cut sugar cane in Queensland and made history refining the White Australian policy.

Title	Duration	Description
Queensland Museum South Bank		
*Body Art	1 – 22 July	Australian Museum exhibition exploring the different ways people adorn their bodies and the reasons and meaning behind them.
Bush Lives	1 – 29 July	An Historic Houses Trust exhibition of eight western NSW families' stories of innovation, imagination and determination in the ways of land management.
In the Swim	11 August – 27 January	Exhibition produced in house on the subject of competitive swimming in Queensland, to coincide with the fifth Goodwill Games in Brisbane.
Heirlooms for tomorrow	11 August – 2 September	Exhibition Access Program, Découpage Guild of Queensland.
QM at the Ekka	8 – 19 August	Selection of fossil materials on display at the Royal Brisbane Show.
Making Do & Queensland Inventions	16 – 19 August	Selection of Queensland Museum artefacts demonstrating "making do" on display at the Brisbane Powerhouse.
Gypsy Queen	17 – 27 August	Rapid Response display, Gypsy Queen engine in the foyer to coincide with the Tiger Moth flyover.
Tasmanian Tiger	8 September – 25 November	Touring exhibition from the Tasmanian Museum and Art Gallery, exhibition shows the Tiger as a living creature and reflects the history of its interaction with Europeans.
Anne Frank & Courage to Care	22 September – 18 November	Touring exhibition from the Anne Frank House Amsterdam shown in conjunction with 'Courage to Care' an exhibition developed in Australia by the Jewish community service B'nai B'rith, about the people who risked their lives to help rescue Jews during the Holocaust.
Worth Seeing	24 February – 18 November	A collection and oral stories by and about young Queenslanders, produced by Dina Browne AO in conjunction with the Queensland Museum.
Yesterday's Child	22 September – 9 October	Exhibition about toys and games of times gone by, organised by Queensland Museum South Bank education staff.
Overcoming Distance	19 October – 11 November	Museum Magnet Schools Project. Display of exhibitions exchanged between the Smithsonian Institution and the Queensland Museum.
Vanishing Qld	8 December – 30 January	A National Trust of Queensland exhibition with photographs by Richard Stringer, this exhibition told of the design, craft and spirit of demolished or disappearing lands across the state.
*Australia's Lost Kingdoms	15 December – 7 April	Australian Museum touring exhibition, exploring the diverse history of Australian animals through interactives, video, models, dioramas, light and sound shows.
Caught in the Rear View Mirror	1 – 30 April	Touring exhibition from the National Archives of Australia. Roy and HG comment on 30 images of life from the 1950's to the 1970's.
4th National Shell Show	7 – 26 March	Display of shells to coincide and promote the International Shell Show at the Greek Club.

**Denotes a paying exhibition*

Title	Duration	Description
From the Steps of Bonegilla	17 April - 15 May	Touring exhibition from the Albury Regional Museum, exploring the impact that Bonegilla Migrant Reception Centre had on lives of those that passed through its gates.
Aust Gemstones in Jewellery	18 May - 16 June	Exhibition Access Program, Gemological Association of Australia display of Gems in Jewellery awards.
World Class Minerals	18 May - 16 June	Exhibition Access Program, Mineralogical Society of Queensland display of World Class Minerals.
Rainbows in Stone	18 May - 16 June	Queensland Museum touring exhibition, the Norm Pedley Agate collection in conjunction with Stunning Stones.
Under the Sea	20 May - 14 June	Workshops run by education staff, exploring life in the world's oceans, through stories, craft and specimens.
International Museums Day	25 May - 2 June	Display representing a cross section of international projects currently being worked on by Queensland Museum scientists.
Mabo	3 - 30 June	A commemorative display on Eddie Koiki Mabo and his central role in the fight for land rights.
Queensland Sciencecentre		
Living Colour	22 June - 27 January	An exploration of the science, psychology and cultural aspects of colour, developed by the Australian Museum, Sydney.
Women with Wings: Images of Australian Women Pilots	23 August - 18 November	A tribute to the spirit and achievements of women pilots across Australia, this exhibition of 33 photographic portraits was developed by the Powerhouse Museum, Sydney and supported by Visions of Australia.
Albert Einstein: Man of the Century	27 March - 12 May	A tribute to the life and work of Albert Einstein, presented by the Hebrew University of Jerusalem.

Sponsorships

The Queensland Museum acknowledges with gratitude the past and/or continuing support of the following donors of cash, product, or services.

Patrons (donations \$100,000 or more)

BHP Community Trust
Centenary of Federation
Channel 7
Network Ten
University of Queensland

Major Sponsors (\$50,000 - \$99,000)

Arts Queensland
Brisbane City Council
The Courier-Mail
Energex
Griffith University
Land Rover Australia
Queensland University of Technology
Toowoomba City Council

Sponsors (\$10,000 - \$49,999)

4KQ
4BC
AgForce
ANZ – Seaworld Trust
Australian Society of Parasitology
A. & P.N. Bartholomai
C & PA Vanguard Investments
Christopher Memorial Charitable Trust
The Dive Bell
Energex
E.R. & A.L. Hayles Charitable Trust
INCITEC
Industrial Health and Safety
Inflatable Boat Centre
Kellogg (Australia)
Oceaneering Australia
Port of Brisbane Corporation
Q-Build Project Services
Queensland Electricity Commission
Seaworld Properties
Unesco – IUGS Scientific Committee
Perpetual Trustees

Supporters (Corporate) (\$5,000 - \$9,999)

Access Ed
Australian Geographic Society
Australian Institute of Marine Science
BOC Gases
Boral
Brisbane River Management Group
Briz 31 Television
Caltex Refineries (Qld)
Channel Nine
Diamantina Outback Tours, Winton
Dingo Mini Diggers
Environmental Protection Agency
Final Trim Magazine
Finlayson Timber & Hardware
Graphic Skills
Heritage Building Society, Toowoomba
Ian Potter Foundation
Kintetsu International Express
McGuigans Wines
Moreton Bay Whalewatching
Prestige Lithographic
Q Rail
Radio 4EB
Rural Industries Research
& Development Council
Siemens Ltd
Singapore Airlines
Southern Qld Institute of TAFE
Spicers Papers
Sunday Mail
Telstra Country Wide
The Greek Club and Convention Centre
Toowoomba & Golden West Regional
Tourist Assoc.
Toowoomba Turf Club
Tourism Queensland
Uniquet Ltd
University of Southern Queensland
University of Sydney
Winton Shire Council

Pandora Foundation Sponsors and Donors

Benefactor

Townsville City Council
Thuringowa City Council
Townsville Port Authority
Ergon Energy Corporation Ltd
Ansett Australia
Ten Queensland (Telecasters Australia Ltd)

Governing Member

BHP Cannington
Breakwater Island Trust/Jupiters
Townsville Hotel & Casino
British Petroleum (BP)
Coca Cola Amatil North Queensland
North Queensland Newspaper Company
Pasminco Century Mine
Suncorp~Metway Ltd
Trust Company of Australia

Fellowship Member

Boulton, Cleary & Kern Solicitors
Brazier Motti Pty Ltd
Centra Townsville
Chapman, George & Margo
E. Robert & Alison L. Hayles
Charitable Fund
Loloma Investments Pty Ltd
Payless Chemists
Samuel & Eileen Gluyas Charitable Trust
Suthers & Taylor
Telecasters North Queensland
The Dive Bell
Townsville Enterprise Limited
Townsville Resorts Pty Ltd
Trinity Consolidated Ltd
Wilson, Ryan & Grose

Member

Barker, Fay & Ron
Carmichael Ford
Carmichael, David & Family
Ferry Property Management

Fodico Pty Ltd
 Geoff Pickering Motors
 Hermit Park Bus Service (Jones Family)
 James Cook University
 Lancini, Laurence & Sharon
 Mak Advertising
 Maunsell McIntyre Pty Ltd
 MVO Industries
 Parry Nissan/Suzuki
 Philip Leong Investments Pty Ltd
 Plante Holdings Pty Ltd
 Price Waterhouse Coopers
 Queensland Rail
 Rider Hunt Queensland Pty Ltd
 Roberts, Leu & North Lawyers
 Rotary Club of Townsville
 Seagulls Resort
 Shorts Properties,
 (Max Short & Merv Short, OAM ED)
 Tony Ireland Townsville

Friend

Australian Economic Consultants
 (AEC Group)
 Bairstow Promotions Pty Ltd
 C.E. Smith & Co
 Colbran Holdings Pty Ltd
 Commonwealth Bank
 Connolly Suthers
 Douglas Stark Pty Ltd
 Galloway & Lando
 Goicoechea Group
 Harvey World Travel Townsville
 Honeycombes Pty Ltd
 John Gribbin Realty
 Leanda Drilling
 Markwell Rockbreaking
 MB Travel
 Menkens, Mike & Trish
 Mike Carney Toyota
 Northern Insurance Brokers Pty Ltd
 Northwest Construction Pty Ltd
 Ray White, Kirwan
 Reichhold, Enterprise Pty Ltd
 Retireinvest
 Roberts (CBE), George V.
 The J.F. Gleeson Family Trust
 Townsville Slipways
 Townsville Thuringowa Water Supply
 Board
 Wilkins, L.E.

Donor

Badgery, R.M.
 Brazier, Keith & Jennifer
 Broomhead, Richard & Rose
 Butler, Trevor & Margaret
 Byte Centre
 Crossland, Chris & Jan
 Curtain, Michael & Jennifer
 Edwards, Wendy
 Goodsell, Mary
 Gro Sea Pty Ltd
 Hoff, Barbara
 Hooper, Max & Palm
 Hugh E Urquhart Real Estate
 Kipco Pty Ltd
 Lyons, John
 MacCallum & Partners
 McArthur, Jon & Margaret
 Nadicprint Services Pty Ltd
 Paul, Stephen & Mary
 Pearse, Elizabeth
 Pickard Associates
 Power, Richard & Gillian
 Pure Pleasure Cruises
 Ray White Kirwan
 Ringwell Pty Ltd
 Roberts, Susan
 Santalucia Group of Companies
 Short, Jan & Warren
 Talbot, Frank & Suzette
 Toohey, Robyn
 Townsville Trade Waste Pty Ltd
 Turl, Peter & Michele
 Wallace, Carden
 Walters, Barry & Shirley
 Watson, Sir Bruce
 Zell, Len

Supporter

Austin Glass
 Coral Air Whitsunday
 Core, Jennie
 Dasenbrock, Mary
 Guazzo, Dr Eric
 Hartley, Dru
 Illidge, E.J.
 Ingersoll-Rand (Australia) Ltd
 Knight, Alexa
 Magnetic Island Community
 & Commerce Association
 Noble, W.W.
 Prestige Litho Pty Ltd
 Rocsol Pty Ltd
 Rowlands Surveys Pty Ltd
 Schaumburg, Mr & Mrs Denis
 Slaney, Mr & Mrs Hal
 The Navigation Centre
 Townsville Chamber of Commerce
 Trinity Anglican School Year 4/5B (1998)
 Wall, Ben & Gwyn

Appendix **Financial Statements**

Board of the Queensland Museum			
STATEMENT OF FINANCIAL PERFORMANCE	Notes	2002	2001
For year ended 30 June 2002		\$000	\$000
Revenues from ordinary activities			
User charges	3	3,348	2,998
Grants and other contributions	4	14,904	14,726
Other	5	730	617
Total revenues from ordinary activities		18,982	18,341
Expenses from ordinary activities			
Employee expenses	6	11,130	10,268
Supplies and services	7	7,163	6,556
Depreciation and amortisation	8	902	1,065
Other	9	103	83
Total expenses from ordinary activities excluding borrowing costs expense		19,298	17,972
Net surplus (deficit)		(316)	369
Non-owner transaction changes in equity			
Net increase in asset revaluation reserve	18	9,788	10,443
Net amount of each revenue, expense, valuation or other adjustment not disclosed above recognised as a direct adjustment to equity	18	4	(1)
Total revenues, expenses and valuation adjustments recognised directly in equity		9,792	10,442
Total changes in equity other than those resulting from transactions with owners as owners	18	9,476	10,811

This Statement of Financial Performance should be read in conjunction with the accompanying notes.

Board of the Queensland Museum
STATEMENT OF FINANCIAL POSITION
 At 30 June 2002

	Notes	2002 \$000	2001 \$000
Current assets			
Cash assets	10	2,910	1,887
Receivables	11	1,289	392
Inventories	12	491	751
Other	13	1	28
Total current assets		4,691	3,058
Non-current assets			
Property, plant and equipment	14	198,263	186,639
Total non-current assets		198,263	186,639
Total Assets		202,954	189,697
Current liabilities			
Payables	15	454	525
Provisions	16	808	811
Other	17	2,039	741
Total current liabilities		3,301	2,077
Total Liabilities		3,301	2,077
Net Assets		199,653	187,620
Equity			
Contributed equity	18	3,642	1,081
Retained surpluses	18	17,945	18,261
Reserves			
Asset revaluation reserve	18	178,066	168,278
Total Equity		199,653	187,620

This Statement of Financial Position should be read in conjunction with the accompanying notes.

Board of the Queensland Museum
STATEMENT OF CASH FLOWS
For year ended 30 June 2002

	Notes	2002 \$000	2001 \$000
Cash flows from operating activities			
<i>Inflows:</i>			
User charges		3,393	2,887
Grants and contributions		15,436	14,726
GST collected on sales		370	522
GST input tax credits		722	707
Interest received		203	179
Other		527	1,114
<i>Outflows:</i>			
Employee costs		(11,320)	(10,262)
Supplies and services		(6,948)	(6,326)
GST paid on purchases		(690)	(820)
GST remitted to ATO		(386)	(467)
Other		(89)	(81)
Net cash provided by/(used in) operating activities	19	1,218	2,179
Cash flows from investing activities			
<i>Inflows:</i>			
Sales of property, plant and equipment		-	19
<i>Outflows:</i>			
Payments for property, plant and equipment		(195)	(2,009)
Net cash provided by/(used in) investing activities		(195)	(1,990)
Net increase in cash held		1,023	189
Cash at beginning of financial year		1,887	1,698
Cash at end of financial year	10	2,910	1,887

This Statement of Cash Flows should be read in conjunction with the accompanying notes.

1. Objectives of the Organisation

The Queensland Museum will be recognized as an innovative, exciting and accessible museum of science, environment and human achievement, of international standing, reaching out to all Queenslanders.

The mission of the Queensland Museum is to create a stimulating environment of discovery and understanding. This will be achieved by:

- » Working with and empowering communities
- » Preserving and interpreting material evidence
- » Telling the changing story of Queensland and its place in the world

The Museum is predominantly funded for the outputs it delivers by Parliamentary appropriations. It also provides the following services on a fee for service basis.

- » admission charges; and
- » consultancy services

2. Summary of Significant Accounting Policies

(a) Basis of Accounting

The financial statements are a general purpose financial report and have been prepared in accordance with the Financial Administration and Audit Act 1977, the Financial Management Standard 1997, Australian Accounting Standards, Statements of Accounting Concepts, Urgent Issues Group Abstracts and other prescribed requirements.

Except where stated, the financial statements have been prepared in accordance with the historical cost convention.

The accounting policies adopted are consistent with those of the previous year.

The accrual basis of accounting has been adopted for all transactions and balances.

(b) Non-collection Grants and Other Contribution Revenue

Non-collection grants, donations and gifts which are non-reciprocal in nature are recognised as revenues.

(c) Cash Assets

For the purposes of the Statement of Financial Position and the Statement of Cash Flows, cash assets include all cash and cheques receipted but not banked as well as deposits at call with financial institutions. It also includes liquid investments with short periods to maturity that are convertible readily to cash on hand at the Museum's option and that are subject to a low risk of changes in value.

(d) Receivables

Trade debtors are recognised at the nominal amounts due at the time of sale or service delivery, settlement on trade debtors generally being required within 30 days from the invoice date.

The collectability of receivables is assessed periodically with provision being made for doubtful debts. All known bad debts have been written off.

(e) Inventories

Inventories represent stock on hand for sale through the Museum shop operations. Inventories on hand are valued at the lower of cost and net realisable value. Cost is based on a weighted average cost method.

(f) Acquisitions of Assets

Actual cost is used for the initial recording of all acquisitions of assets, other than collections, controlled by the entity.

Assets acquired at no cost or for nominal considerations are recognised at their fair value at date of acquisition in accordance with AAS21 - Acquisition of Assets.

Cost is determined as the value given as consideration plus costs incidental to the acquisition, including all other costs incurred in getting the assets ready for use, including architect's fees and engineering design fees.

(g) Property, Plant and Equipment

All items of property, plant and equipment with a cost, or other value, in excess of \$2000 are recognised in the financial statements in the year of acquisition.

Items with a lesser value are expensed in the year of acquisition.

Land, although ownership is retained by the Crown, is administered by the Queensland Museum. The economic benefits of this land accrue to the Queensland Museum. The Queensland Museum cannot dispose of this land without the prior approval of the Governor in Council.

(h) Collections

The Museum Collections are recorded in the financial statements at a value adopted by the Board of the Queensland Museum. The valuation of the Museum Collections is based on a professional assessment in accordance with Fair Value methodology. The valuation is conducted by the Director of the Museum in consultation with curatorial staff and is accepted by the Board. The Museum Collections are considered to have an indeterminate useful life. Comprehensive asset revaluations are performed every five (5) years, with an annual indexation between the full revaluations at CPI. The last full valuation was carried out at 30 June 2001 and will be due again by 30 June 2006. Additions to the collections by search, gift, bequests, etc are not initially recognised at the date of acquisition, but are incorporated in the valuation process at year end.

(i) Amortisation and Depreciation of Property, Plant and Equipment

Land is not depreciated as it has an unlimited useful life.

Depreciation on property, plant and equipment is calculated using the diminishing value method so as to write off the values of each depreciable asset, less its estimated residual value, progressively over its estimated useful life to the entity.

Any expenditure that increases the originally assessed capacity or service potential of an asset is capitalised and the new depreciable amount is depreciated over the remaining useful life of the asset to the entity.

For each class of depreciable asset the following depreciation rates were used:

Class	Depreciation Rates
Buildings	3%
Plant and equipment:	
Computers	30%
Motor vehicles	22.5%
Scientific equipment	15%

(j) Revaluations of Non-Current

Physical Assets

From 1 July 2001, land and buildings are measured at fair value in accordance with AASB 1041, *Revaluation of Non-Current Assets* and Queensland Treasury's *Non-Current Asset Accounting Guidelines for the Queensland Public Sector*.

Other non-current assets, principally plant and equipment, are measured at cost.

For 2001-02, a comprehensive revaluation of land and buildings, other than the off-site collection store at Hendra, was undertaken by R.N. Mullins LLB FAPI of the Australian Valuation Office. The revaluation of land was based on the analysis of real property sales, and buildings on the basis of current fair value, as at 30 June 2002.

The Hendra site was acquired during 2001-02 as part of the Millenium Arts program. Acquisition cost is considered to be current fair value as at 30 June.

Separately identified components are measured on the same basis as the assets to which they relate.

For revaluation of collections see note 2(h).

(k) Leases

A distinction is made in the financial statements between finance leases, that effectively transfer from the lessor to the lessee substantially all the risks and benefits incidental to ownership, and operating leases under which the lessor effectively retains substantially all risks and benefits.

Where a non-current asset is acquired by means of a finance lease, the asset is recognised at an amount equal to the present value of the minimum lease payments. The liability is recognised at the same amount. Lease payments are allocated between the principal component and the interest expense.

Operating lease payments are representative of the pattern of benefits derived from the leased assets and are expensed in the periods in which they are incurred.

(l) Other Financial Assets-Investments

Financial assets are brought to account at the lower of cost and recoverable amount and are disclosed at the fair values indicated in Note 23.

Interest revenues are recognised as they are accrued.

(m) Payables

Trade and other creditors are recognised upon receipt of the goods or services ordered and are measured at the agreed purchase/contract price gross of applicable trade and other discounts. Amounts owing are unsecured and are generally settled on 30 day terms.

(n) Employee Entitlements

Wages, Salaries and Annual Leave

Wages, salaries and annual leave due but unpaid at reporting date and recognised in the Statement of Financial Position include related on-costs such as payroll tax, workcover premiums and employer superannuation contributions.

Long Service Leave

Under the State Government's long service leave scheme a levy is made on the Museum to cover this expense. Amounts paid to employees for long service leave are claimed from the scheme as and when leave is taken.

No provision for long service leave is recognised in the financial statements, the liability being held on a whole-of-Government basis and reported in the financial report prepared pursuant to AAS31 - *Financial Reporting by Governments*.

Superannuation

Employer superannuation contributions are paid to QSuper, the superannuation plan for Queensland Government employees at rates determined by the State Actuary.

No liability is recognised for superannuation benefits in the financial statements, the liability being held on a whole-of-Government basis and reported in the financial report prepared pursuant to AAS31 - *Financial Reporting by Governments*.

(o) Taxation

The Museum's activities are exempt from Commonwealth taxation except for fringe benefits tax and Goods and Services Tax (GST). As such, input tax credits receivable and GST payable from/to the Australian Tax Office are recognised and accrued.

(p) Insurance

The Museum carries insurance cover in the areas of Property (including items on loan), General Liability (incorporating Directors & Officers liability), Professional Indemnity, Personal Accident, Marine Hull and Motor Vehicles. Insurance coverage is with the Queensland Government Insurance Fund. The Museum does not insure the State Collection at this time.

(q) Resources Received Free of Charge or For Nominal Value

Contributions of services are recognised only if the services would have been purchased if they had not been donated and their value can be measured reliably. Where this is the case, an equal amount is recognised as a revenue and an expense.

(r) Corporate Administration Agency

The Corporate Administration Agency (CAA) was established on 1 July 1997, as a unit of Arts Queensland. The *Arts Legislation Amendment Act 1997* transferred the assets and liabilities of the Queensland Cultural Centre Trust (QCCT) that was abolished in December 1997 to the State and the CAA became the manager of the Cultural Centre precinct. The Board of the Queensland Museum had a signed lease agreement with the QCCT and the lease has been assumed by the State of Queensland (Section 85(2) of the Act). While the State does not charge rent on the premises occupied by the Museum, the Museum does make a contribution to the continued maintenance of the building occupied. The provision of the building and items of fitout, including infrastructure plant and equipment, forms part of this agreement.

(s) Rounding and Comparatives

Amounts included in the financial statements have been rounded to the nearest \$1,000 or, where that amount is \$500 or less, to zero.

Comparative information has been restated where necessary to be consistent with disclosures in the current reporting period.

(t) The Harry West Trust

The Board of the Queensland Museum has been appointed as the trustee of The Harry West Memorial Fund, a testamentary trust established in accordance with the last will and testament of Henry (Harry) Thomas West (deceased). Assets of the Trust comprise nine Brisbane residential properties. All income from the Trust is applied to the benefit of the Museum and is included as miscellaneous income.

(u) Contributed Equity

Non-reciprocal transfers of assets and liabilities between wholly-owned Queensland public sector entities, including as a result of machinery-of-Government changes are adjusted to 'Contributed Equity' in accordance with UIG Abstract 38 *Contributions to Owners Made to Wholly Owned Public Sector Entities*. Appropriations for equity adjustments are similarly designated.

(v) Board Remuneration

Remuneration of board members was as follows:

\$0-9,999	11 members
Total remuneration paid to all members:	\$26,104

Board of the Queensland Museum**NOTES TO AND FORMING PART OF THE FINANCIAL STATEMENTS**
For year ended 30 June 2002

2002	2001
\$000	\$000

3. User charges

Admission charges

General	1,167	1,104
Special exhibitions	434	148
Consultancy	640	647
Sales revenue - shops	728	680
Subscriptions	157	156
Functions/Venue hire	44	50
Other	178	213
Total - User charges	3,348	2,998

4. Grants and other contributions

Grants - State Government recurrent	12,505	*12,387
Grant - State Government special	300	-
Donations	357	83
Industry contributions	26	93
Commonwealth government grants	138	86
Local government contributions	50	-
Grant - Workforce Restructure	581	-
Grants - Other	947	**2,077
Total - Grants and other contributions	14,904	14,726

*2001 includes \$0.302m for superannuation adjustment.

**2001 includes \$1.7 million in funding from Queensland Heritage Trails for the construction of the Cobb & Co Carriage Factory in Toowoomba.

5. Other revenues

Interest	203	179
Gain on sale of property, plant and equipment	-	4
Goods received below fair value	54	-
Miscellaneous	473	434
Total - Other revenues	730	617

6. Employee expenses/Number of employees

Employee expenses:

Wages and salaries	8,152	7,681
Employer superannuation contributions	984	*1,226
Long service leave levy	131	123
Annual leave expenses	607	567
Other	**1,256	671
Total - Employee expenses	11,130	10,268

*2001 includes a one-off back payment of \$0.302m for superannuation entitlement arrears.

**2002 includes one-off severance and incentive payments totalling \$0.658m to staff who accepted Voluntary Early Retirement packages during the year.

Number of employees:	194	205
----------------------	-----	-----

The number of employees includes both full-time employees and part-time employees measured on a full-time equivalent basis. Employees at new/expanded venues have offset reductions flowing from Voluntary Early Retirements mentioned above.

7. Supplies and services

Corporate services charges	727	705
Consultants and contractors	*216	90
Materials	350	396
Repairs and maintenance	119	172
Travel	257	228
Contribution to Queensland Cultural Centre facilities	1,690	1,625
Property lease and rental	852	840
Special Exhibitions	136	82
Cost of goods sold	546	274
Operating expenses	2,270	2,144
Total - Supplies and services	7,163	6,556

*2002 includes consultant's fees of \$0.044m in connection with repatriation of human remains and secret sacred objects from the Aboriginal Studies Collection, and \$0.054m for development of an exhibition at the Cobb & Co Museum.

8. Depreciation and amortisation

Plant and equipment	279	470
Buildings	623	595
Total - Depreciation and amortisation	902	1,065

Board of the Queensland Museum

NOTES TO AND FORMING PART OF THE FINANCIAL STATEMENTS

For year ended 30 June 2002

2002
\$000

2001
\$000

9. Other expenses

External audit fees	13	11
Bad debts expense	-	3
Goods and services supplied below fair value	32	-
Losses from the disposal of non-current assets	14	2
Other	44	67
Total - Other expenses	103	83

10. Cash Assets

24 hour call deposits	2,653	1,834
Cash at bank and on hand	249	41
Imprest accounts	8	12
Total - Cash assets	2,910	1,887

11. Receivables

Current

Trade debtors	392	252
Less: provision for doubtful debts	-	(3)
	392	249
GST receivable	81	113
Less: GST payable	(39)	(55)
Long service leave reimbursements	230	38
Grant - workforce restructure	581	-
Other	44	47
Total - Current receivables	1,289	392

12. Inventories

Inventory held for resale

Shops	491	751
Total - Inventories	491	751

13. Other Current Assets

Prepayments	-	25
Other	1	3
Total - Other current assets	1	28

14. Property, plant and equipment**Land:**

At Museum Board valuation		7,741
At independent valuation 2002	7,874	
Hendra - At cost	1,004	
	8,878	7,741

Included in land owned by the Museum is land at Coomera and the sites of the Cobb & Co Museum, the Museum of Tropical Queensland and the Museum of North Western Queensland. In addition the Queensland Museum at Southbank and the Science Centre in George St, Brisbane are located on leased properties

Buildings:

At Museum Board valuation		20,778
At independent valuation 2002	24,384	
Hendra - At cost	1,553	
Less: Accumulated depreciation	(2,074)	(1,328)
	23,863	19,450

Heritage and cultural assets:

Museum Collections at Museum Board valuation	164,802	156,563
	164,802	156,563

Plant and equipment:

At cost	2,367	2,286
Less: Accumulated depreciation	(1,647)	(1,399)
	720	887

Capital work in the course of construction - at cost

Cobb & Co Museum, Toowoomba	-	1,998
-----------------------------	---	-------

Total - Property, plant & equipment	198,263	186,639
--	----------------	----------------

14. Property, plant and equipment (contd)

Reconciliation

Reconciliations of the carrying amounts of each class of property, plant and equipment at the beginning and end of the current reporting period.

	Land 2002 \$000	Buildings 2002 \$000	Heritage & cultural assets 2002 \$000	Plant & equipment 2002 \$000	In course of construction 2002 \$000	Total 2002 \$000
Carrying amount at start of year	7,741	19,450	156,563	887	1,998	186,639
Acquisitions	-	-	-	126	69	195
Collection acquired during the year at Board valuation			3,090			3,090
Acquisitions - equity transfers from Arts Queensland	1,004	1,553				2,557
Disposals		-		(46)		(46)
Accumulated depreciation written-back on disposal				32		32
Transfers between classes		2,067			(2,067)	-
Revaluation increments	133	1,539	5,149			6,821
Accumulated depreciation written-back on revaluation		(123)				(123)
Depreciation for period		(623)		(279)		(902)
Carrying amount at end of year	8,878	23,863	164,802	720	-	198,263

2002
\$000

2001
\$00

15. Payables

Current

Trade creditors	244	229
Long service leave levy payable	36	35
Other	174	261
Total - Current payables	454	525

16. Provisions

Current

Employee entitlements		
» Annual leave	808	811
Total - Current provisions	808	811

17. Other current liabilities

Unearned revenue	2,039	741
------------------	-------	-----

Unspent proportion as at 30 June 2002 of grants and other revenues received in advance.

Board of the Queensland Museum
 NOTES TO AND FORMING PART OF THE FINANCIAL STATEMENTS
 For year ended 30 June 2002

	Contributed Equity		Retained Surpluses		Asset Revaluation Reserve	
	2002 \$000	2001 \$000	2002 \$000	2001 \$000	2002 \$000	2001 \$000
18. Changes in equity						
Balance 1 July	1,081	1,082	18,261	17,892	168,278	157,835
Net surplus (deficit)			(316)	369		
Non-owner changes in equity recognised on the face of the Statement of Financial Performance:						
<i>Increase in asset revaluation reserve</i>						
» Museum Collection - revaluation					5,149	3,328
» Museum Collection - acquisitions					3,090	6,627
» Land					133	488
» Buildings					1,416	-
<i>Transactions with Owners as Owners:</i>						
» Net leave liabilities transferred to (from) other departments	4	(1)				
» Transfer of Hendra property from Arts Queensland	2,557					
Balance 30 June	3,642	1,081	17,945	18,261	178,066	168,278
<i>Closing balance of Asset revaluation reserve by class:</i>						
» Land					621	488
» Buildings					1,674	258
» Heritage & Cultural Assets					175,771	167,532
Total - Asset Revaluation Reserve					178,066	168,278

19. Reconciliation of net surplus to net cash provided by/(used in) operating activities

Surplus from ordinary activities	(316)	369
<i>Non-cash items:</i>		
Depreciation expense	902	1,065
Bad debts expense	-	3
Loss (Gain) on sale of property, plant and equipment	14	(2)
Net leave liabilities transferred	4	(1)
<i>Changes in assets and liabilities</i>		
(Increase)/decrease in net receivables	(897)	(43)
(Increase)/decrease in inventories	260	38
(Increase)/decrease in prepayments	27	1
Increase/(decrease) in payables	(71)	197
Increase/(decrease) in employee provisions	(3)	27
Increase/(decrease) in other liabilities	1,298	525
Net cash provided by/(used in) operating activities	1,218	2,179

20. Non-cash financing and investing activities

Assets and liabilities received or donated/transferred by the Museum and recognised as revenues and expenses are set out in Notes 5 and 9 respectively.

21. Commitments for Expenditure*Non-cancellable operating lease commitments*

Commitments under operating leases at reporting date are inclusive of anticipated GST and are payable as follows:

Not later than one year	155	221
Later than one year and not later than five years	12	100
Later than five years	-	-
	167	321

Operating leases are entered into as a means of acquiring access to office accommodation, storage facilities and certain office technologies necessary for effective operations.

Technology Leases

Lease payments are generally fixed. However, where the owner is affected by any future increase or decrease in the cost of hiring out the equipment, due to a change in law or regulation, the Museum must pay to the owner, by way of

increased instalments, an amount which represents the increased cost or reduced amount payable. Variations may also occur due to any late instalment payment by the Museum, in the form of a penalty. This penalty is indexed to the official

Reserve Bank of Australia's daily cash rate. No renewal or purchase options exist in relation to technology leases, and they do not contain any restrictions on financing or other leasing activities.

21. Commitments for Expenditure (contd)

Property Leases

Lease payments are negotiated and reviewed to market every two years. No renewal or purchase options exist, and there are no restrictions on financing or other leasing activities within current agreements.

Commitments have reduced significantly in this area due to the change in arrangements for the Museum's facilities at Montague Road, West End and Grey Street, South Brisbane. It is anticipated that the West End facility will be vacated in October 2002, and Grey Street in February 2003, on expiration of the leases.

Other Commitments

Other commitments at reporting date are inclusive of anticipated GST and are payable as follows:

	2002	2001
Not later than one year		
Service Level Agreements with CAA	2,746	2,417

22. Post balance date events

Change in accounting policy

Capitalisation of exhibitions expenditure.

In accordance with current policy, costs of construction of exhibitions for campuses of the Museum have been expensed in the financial year in which such costs were incurred. The Board of the Queensland Museum, following consultation with representatives of the Queensland Audit Office, has decided that each campus exhibition developed from 1 July 2002 will be capitalised on completion at a value equal to the cost incurred in its development. Each exhibition will be depreciated on a straight line basis over its estimated useful life to more correctly record the progressive diminution of its value to the Museum. It is not intended to assign any capital value to existing exhibitions developed in previous accounting periods for which costs have been expensed.

Queensland Museum Foundation Trust

The Board of the Queensland Museum established the Queensland Museum Foundation Trust in June 2002. The Trust did not enter into any material transactions for the year ended 30 June 2002.

Hendra Off-site Collection Store

Land and buildings at Hendra were acquired as part of the Millenium Arts Program and transferred to the Board's control prior to 30 June 2002.

Renovations and additions on this site continue as part of the Millenium Arts Program. Costs incurred will be capitalised and transferred to the Board during the 2002-03 financial year.

The Workshops Rail Museum, Ipswich

This new addition to the Queensland Museum Network is being constructed on land currently owned by Queensland Rail. This development comprises part of the Queensland Heritage Trails Network project. On completion during 2002-03, the land, buildings and exhibitions will be transferred to the Board of the Queensland Museum.

23. Financial Instruments

Interest Rate Risk Exposure

The Board of the Queensland Museum is exposed to interest rate risk through its investments in the Queensland Treasury Corporation (QTC) Cash Fund. Cash Fund earnings are credited daily based on the market value of the Cash Fund. At balance date the interest rate was 4.7% (2001 - 5.03%), however the rate changes daily based on the change in market yields.

Contractual Repricing/Maturity Date

	Floating Interest Rate	1 year or less	1 to 5 years	Greater than 5 years	Non Interest Bearing	Total	Weighted Average Rate
	\$000	\$000	\$000	\$000	\$000	\$000	%
Financial Assets							
Cash	257	-	-	-	-	257	n/a
Queensland Treasury Corporation	2,653	-	-	-	-	2,653	4.70
Receivables	-	-	-	-	1,289	1,289	n/a
Total	2,910	-	-	-	1,289	4,199	n/a
Financial Liabilities							
Payables	-	-	-	-	454	454	n/a
Total	-	-	-	-	454	454	n/a

Floating interest rate represents the most recently administered market rate applicable to the instrument at 30 June 2002.

The fixed rate represents weighted average market interest rate.

23. Financial Instruments (contd)

Credit Risk

The maximum exposure to credit risk at balance date in relation to each class of recognised financial assets is the carrying amount of those assets, net of any provision for doubtful debts, as indicated in the Statement of Financial Position.

Net Fair Value

The net fair value is determined as follows:

- » The net fair value of cash and cash equivalents and non-interest bearing monetary financial assets and financial liabilities approximate their carrying amounts.

- » The net fair value of other monetary financial assets and financial liabilities is based on market prices where a market exists, or is determined by discounting expected future cash flows by the current interest rate for financial assets and liabilities with similar risk profiles.

Financial Instruments	Total Carrying Amount		Net Fair Value	
	2002	2001	2002	2001
	\$000	\$000	\$000	\$000
Financial Assets				
Cash	257	53	257	53
Receivables	1,289	392	1,289	392
Queensland Treasury Corporation	2,653	1,834	2,653	1,834
Financial Liabilities				
Payables	454	525	454	525

24. Pandora Foundation

The Pandora Foundation Limited was established during 1995 for the purpose of assisting the Museum in the HMS Pandora project. The Foundation donated to the Museum a total of \$31,000 during 2001-02, which has been treated as unearned revenue at balance day, pending matching expenditure being incurred.

25. Contingencies


a) Native Title claims over Museum land
 As at 30 June 2002, no native title claims have been made on Museum land.

There were no other known contingent assets or liabilities at 30 June 2002.


CERTIFICATE OF THE BOARD OF THE QUEENSLAND MUSEUM

The foregoing financial statements have been prepared pursuant to section 46F of the *Financial Administration and Audit Act 1977* and other prescribed requirements. We certify that :

- (a) the prescribed requirements for establishing and keeping the accounts have been complied with in all material respects: and
- (b) the statements have been drawn up to present a true and fair view, in accordance with prescribed accounting standards, of the transactions of Board of the Queensland Museum for the financial year ended 30 June 2002 and of the financial position of the entity at the end of that year.



Mrs Nerolie Withnall
Chairman
Board of the Queensland Museum



Dr Ian Galloway
Director
Queensland Museum

Date:

Date: 24/9/02.....

INDEPENDENT AUDIT REPORT

To the Board of the Queensland Museum

Scope

I have audited the general purpose financial statements of the Board of the Queensland Museum prepared by the Statutory Body for the year ended 30 June 2002 in terms of section 46F of the *Financial Administration and Audit Act 1977*. The financial statements comprise the Statement of Financial Performance, Statement of Financial Position, Statement of Cash Flows, Notes to and forming part of the financial statements and certificates given by the Chairman and officer responsible for financial administration.

The Board is responsible for the preparation and the form of presentation of the financial statements and the information they contain. I have audited the financial statements in order to express an opinion on them.

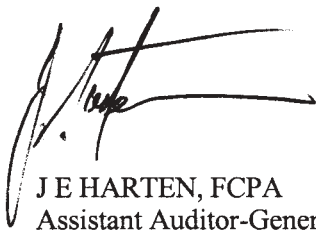
The audit has been conducted in accordance with *QAO Auditing Standards*, which incorporate the Australian Auditing Standards, to provide reasonable assurance as to whether the financial statements are free of material misstatement. Audit procedures included the examination, on a test basis, of evidence supporting the amounts and other disclosures in the financial statements and the evaluation of accounting policies and significant accounting estimates. These procedures have been undertaken to form an opinion whether, in all material respects, the financial statements are presented fairly in accordance with prescribed requirements in Australia which include Australian Accounting Standards so as to present a view which is consistent with my understanding of the entity's financial position, and the performance as represented by the results of its operations and its cash flows.

The audit opinion expressed in this report has been formed on the above basis.

Audit Opinion

In accordance with section 46G of the *Financial Administration and Audit Act 1977*, I certify that I have received all the information and explanations I have required and, in my opinion -

- the prescribed requirements in respect of the establishment and keeping of accounts have been complied with in all material respects; and
- the statements have been drawn up so as to present a true and fair view, in accordance with prescribed accounting standards and other mandatory professional reporting requirements in Australia, of the transactions of the Board of the Queensland Museum for the financial year 1 July 2001 to 30 June 2002 and of the financial position as at the end of that year.



J E HARTEN, FCPA
Assistant Auditor-General

(As Delegate of the Auditor-General of Queensland)



Queensland Audit Office
Brisbane



Queensland Museum

PO Box 3300

SOUTH BRISBANE, QLD, 4101

Telephone: (07) 3840 7635

Fax: (07) 3846 1918

www.Qmuseum.qld.gov.au

This Report is available at:
www.Qmuseum.qld.gov.au/organisation/reports/



Queensland
Government