



The Honourable Matt Foley, MLA
Minister for Employment Training and Youth
and Minister for The Arts

Dear Minister

I take pleasure in presenting you with the Annual Report of the Board of the Queensland Museum for the year ended 30 June 2001.

Yours sincerely

A handwritten signature in cursive script, which reads "Nerolie Withnall".

Nerolie Withnall
Chairman
Board of the Queensland Museum

Presented to Parliament

DETAILED REPORT

The mission of the Queensland Museum is to create a stimulating environment of discovery and understanding by:

- Working with and empowering our communities;
- Preserving and interpreting material evidence; and
- Telling the changing story of Queensland and its place in the world.

In the Museum's new Strategic Plan eight areas are identified as strategically important to the long-term performance of the Queensland Museum. The annual Report for 2000/2001 has therefore been structured around these eight strategic domains.

1. State Wide Museum Services
2. Museum Experience
3. Research and Scholarship
4. Caring for Collections
5. Information Management and Information Technology
6. Marketing
7. Resources
8. Management

CONTENTS

Board of the Queensland Museum	1
Chairman's Report	3
Organisational Structure	5
1. State Wide Museum Services	6
2. Museum Experience	19
3. Research and Scholarship	21
4. Caring for Collections	28
5. Information Management and Information Technology	34
6. Marketing	35
7. Resources	36
8. Management	37
Appendices	39
(I) Publications	39
(II) Grants Won and Consultancies	45
(III) Annual Performance Indicators	49
(IV) Overseas Travel	55
(V) Functions and Powers of the Board	56
(VI) Financial Statements	57
Sponsorships	Inside back cover
Pandora Foundation Sponsorships	Outside back cover

BOARD OF THE QUEENSLAND MUSEUM

The Board of the Queensland Museum was established in 1970 under the provisions of the *Queensland Museum Act 1970*, although the Queensland Museum first began its long history of service provision to the Government and people of the State in 1862. The only substantial changes to this Act came with the *Arts Legislation Amendment Act 1997*. The statutory functions and powers of the Board are detailed in Appendix V.

The Board is appointed by the Governor-in-Council on the recommendation of the Minister for the Arts. Under the amended Act, terms are for up to five years.

All members bring experience and specific expertise to the Board, including a broad appreciation of the Museum's major fields of endeavour.

The Board met 11 times during the year at the Queensland Museum at South Brisbane, 10 of these meetings were regular Board meetings and one was a special meeting of the Board held on 22 June to discuss Regional Services.

BOARD MEMBERS

Mrs N. Withnall, BA, LLB	Chairman
Mr R. Bryan, BSc (Hons)	Vice-Chairman (until 30 September 2000)
Dr R. Anderson OAM	Vice-Chairman (from 18 December 2000) and Member (until 17 December 2000)
Dr C.J. Mittelheuser AM, BSc(Hons), PhD, HonDPhil	Member
Mr H. Greenway, FCA, ACIS	Member
Ms A. Jones, BDesSt	Member
Lady Edwards AM	Member
Ms J. Lennon, MA (Hons)	Member
Mr P.J. Appleton	Member (from 1 October 2000)
Mr R. Heather	Member (from 1 October 2000)
Mrs J.E. Richardson	Member (from 1 October 2000)
Dr I. Galloway, BSc (Hons), PhD, MAgSt	Observer and Director
Mr K Radbourne	Government Representative(until 26 March 2001)
Ms M. O'Donnell	Government Representative (from 27 March 2001)
Mr G. Innes, BCom, ASA	Observer

QUEENSLAND MUSEUM AUDIT COMMITTEE

Mr. H. Greenway, FCA, ACIS	Chairman
Ms A. Jones, BDesSt	Member
Dr I. Galloway, BSc (Hons), PhD, MAgSt	Observer
Mr B. Ganly	(QAO) Observer
Mr A. Dougherty	(QAO) Observer
Mr G. Innes, BCom, ASA	Observer
Mr W. Leaver	(CAA) Observer
Mr M. Wakefield	Observer

QUEENSLAND MUSEUM ABORIGINAL & TORRES STRAIT ISLANDER
CONSULTATIVE COMMITTEE

Dr R. Anderson OAM	Chairman (ATSIAB Chairman, representing Brisbane Elders Committee, Quandamooka Land Council, Quandamooka Elders)
Mrs P. O'Connor, BA	Secretary (representing Yugambah Museum, Beenleigh)
Mr M. Williams, MPhil (Qual)	Member (ATSI Studies Unit, Qld University)
Mrs J.E. Richardson	Member (representing TSI)
Ms I. Ryder	Member (representing Nalingu Aboriginal Corporation)
Ms C. Wall	Observer (Department of the Premier)
Mr I. Delaney	Observer (ATSIC Councillor)
Mr T. Robinson	Observer (representing QWIG)
Ms P. Thompson	Observer (ATSIC Commissioner)
Mr R. Sandy	Member
Mrs N. Withnall, BA, LLB	ex-officio Member
Dr I. Galloway, BSc (Hons), PhD, MAgSt	ex-officio Member

QUEENSLAND MUSEUM ADVISORY COMMITTEE ON WOMEN'S ISSUES
(Until 8 November 2000)

Dr C. Patterson, PhD, GradDipBus	Chairperson
Ms H. Gregory, BA(Hons)	representing QMCQH
Dr N. Franklin	representing QMCQH
Ms P. Cook	representing QMCQH
Dr L. Macintosh, OBE	representing National Council of Women of Qld Inc.
Mrs C. Evans	representing Qld Country Women's Association
Mrs T. Heybroek	Member
Ms P. O'Connor, BA	representing QMATSICC
Ms L. McCosker	representing Office of Women's Policy
Sr L. Yuen	Member
Mrs N. Withnall, BA, LLB	ex-officio Member
Dr I. Galloway, BSc (Hons), PhD, MAgSt	ex-officio Member

Note: As a result of issues raised by the Committee, the Board, at its August 2000 meeting approved the establishment of a Community Council, more broadly based than the Committee, that is to be convened to consider specific issues or projects.

CHAIRMAN'S REPORT

I am pleased to present this report on behalf of the Board of the Queensland Museum. The Queensland Museum has continued to provide a high level of professional leadership for the museum industry and the Queensland community.

With Dr Ian Galloway established as the new Director of the Queensland Museum, the Board and staff worked to develop a new Strategic Plan, covering the period 2001 to 2005, and associated Operational Plans. These were submitted to the Minister for the Arts in June 2001, and have been accepted by him. As a flow on from the Strategic Plan, development of a number of more specific strategic planning documents has been initiated. These include an Information and Technology Strategic Plan 2001-2005, a Capital Investment Strategic Plan 2001-2005, Regional Services Strategies 2001-2005 and a Museum-wide Marketing Strategy. To reflect the new planning, this Annual Report has been structured around the eight Strategic Domains identified in the Queensland Museum Strategic Plan 2001-2005.

During the first full year of operation of the expanded Museum of Tropical Queensland (MTQ), the northern campus of the Queensland Museum in Townsville received much favorable comment and recognition, with a total of ten awards for architecture, engineering, project management and materials, in addition to the award of Best Tourism Development from North Queensland Tourism. While 584 educational groups took advantage of the 28 new educational programs offered, and there were ten temporary exhibitions staged in the Box Gallery, overall visitor numbers of 72,842 were below those projected by consultants during planning of the expansion. A review of operational income and costs will be conducted early in the new financial year.

The first part of the Heritage Trails funded expansion of the Cobb & Co Museum in Toowoomba, featuring the Centenary of Federation exhibition, 'Federation: Queensland's Story' was opened by the Honourable Mat Foley, MLA, on Australia Day 2001. The next component of the expansion is nearing completion and will be opened in October 2001.

The Queensland Museum's bid to Queensland Rail for the contract to develop the Visitor Experience for The Workshops Rail Museum at North Ipswich was unsuccessful. Museum staff are working with Queensland Rail, and the successful contractors, the Carson Group, to ensure the best possible outcome for The Workshops project. Following extensive negotiations with my Board, it is understood that our Minister will be inviting the Queensland Museum to be the operators of the museum component of The Workshops, the largest of the Heritage Trails funded Centenary of Federation Projects.

As well as supporting other campuses, the Museum Services Program, with the support of curatorial and conservation sections, maintained a high level of activity at the Southbank Campus of the Museum and carried out two contract consultancies, at Cooktown and Cloncurry. The Southbank Campus hosted twenty three temporary exhibitions during 2000-2001. In addition two longer term exhibitions were completed, the indigenous display 'Objects as Art' and the Museum's Centenary of Federation funded exhibition 'Queensland 1901'. Three travelling exhibitions were circulated to six regional venues. The Sciencentre Roadshow returned to the road, thanks to sponsorship from the University of Queensland and the Courier Mail, reaching 13,231 visitors in regional and rural centres. The Museum's five Museum Development Officers continued to provide on the spot support for community museums, galleries and keeping places in some areas of regional Queensland. My Board will continue to explore ways of securing additional resources to expand this program, so all community collecting groups across the State have access to professional assistance. This is seen as one way in which the Museum can provide long term support for the Heritage Trails Projects under development at present.

The Museum continued to maintain its high international reputation for scholarship. One hundred and thirty-seven research papers and authoritative articles were published by staff, some in the two volumes of *Memoirs of the Queensland Museum* that were printed. Natural Environment Sections were particularly successful in securing additional resources for research and collection building. As an example, the funds secured through competitive research grants were up 58% over the previous financial year. Under the leadership of Olivia Robinson, Senior Curator, Aboriginal Studies, after extensive negotiations the Museum secured a significant grant from the Commonwealth, to facilitate the repatriation of culturally sensitive material to indigenous communities. The initial negotiations with Aboriginal and Torres Strait Islander communities will commence early in 2001-2.

The two longer term exhibitions initiated at the Southbank campus drew heavily on Cultural Heritage staff expertise. Curators from the Program also provided expert input into many of the twenty three temporary exhibitions staged at Southbank. The museum hosted the

international Humpback Whale Conference 2000 here, while fifteen staff had the opportunity to travel internationally, presenting papers and carrying out research across the world. While the Museum appreciates its international standing, it does not neglect its local communities. For example, staff contributed to the NAIDOC week family day in Musgrave Park, many staff contributed to National Science Week activities at the Museum, staff arranged a small display at Parliament House to mark the Queensland Government's official recognition of the Australian South Sea Islander community and a popular promotion of the Museum was mounted in the Queen Street Mall.

Development of the State's museum collections resulted in the accessioning of 45,251 items. Perhaps more significantly, a record 251,749 items were audited, including approximately 180,000 items taken over from the University of Queensland Geology collection, with a major contribution from Work For The Dole participants. To address collection storage requirements, my Board, as part of the Government's Millenium Arts Project, initiated a search for a suitable off site building to purchase and refit to accommodate new collections such as the University of Queensland Geology Collection, and collections housed in rented premises.

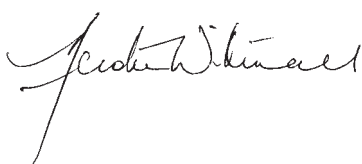
In addition to drafting the Information and Technology Strategic Plan 2001-2005, staff redesigned the Museum Website, 'Museum Explorer' and changed the format with the necessary programming to bring hosting of the Website in-house. This will allow a much more responsive site, that can be kept up to date and expanded easily and controllably. The 'Events Calendar', with up to date and reliable information is now the most popular page on the site.

While the Marketing Program maintained a high level of publicity for the Museum, the major initiative for the year was the establishment of a sub-committee of my Board, to work with a senior officer seconded from the Department of Premier and Cabinet, to assist with the development of a Foundation for the Museum. Ensuring the availability of adequate resources for the effective staffing and operation of the Museum across all its campuses is a major issue for my Board. Establishment of the Foundation is seen as one positive step in that direction.

I thank members of my Board, and members of advisory and management committees to the Board, for their vital contributions during the year. I look forward to continuing to work constructively with all our supporters, formal and informal, across the State. My congratulations to the dedicated staff of the Museum who have contributed to a year of high activity, at a time when some resources are limited. Progress has been made, in consultation with staff and Unions, to reduce where appropriate the use of casual staff through the creation of permanent full and part-time positions.

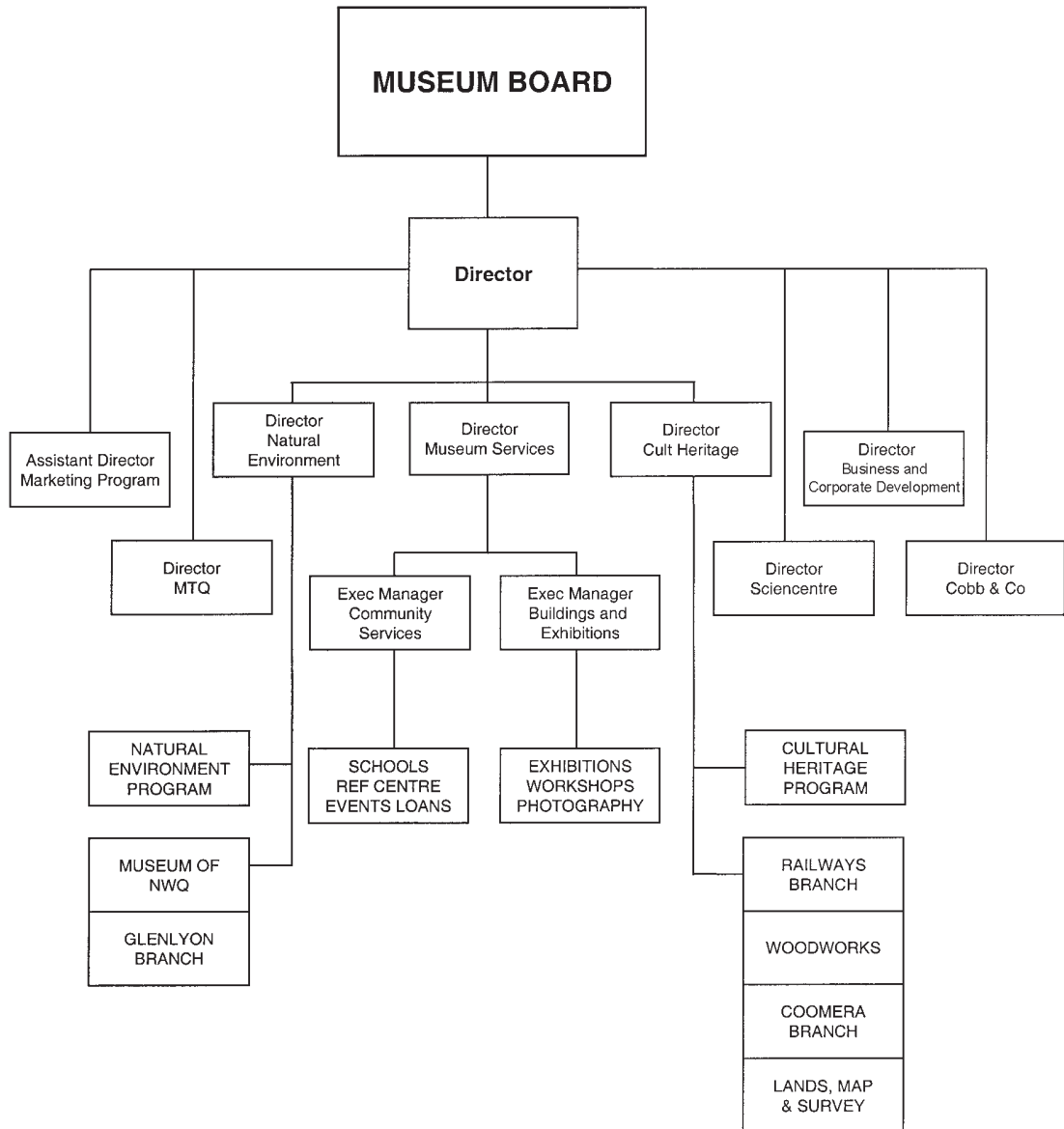
In this, the Year of the Volunteer, I would like to convey my special thanks and that of the Museum, for the invaluable contribution made by over 500 volunteers. The museum benefited to the extent of 7,500 days of service from this skilled and dedicated support group. Volunteer contributions ranged from high level research output and advice from Honorary Associates, Research Fellows and Consultants, to dedicated assistance to visitors to the Queensland Sciencecentre, to construction and maintenance of Education Loan Kits that travel throughout the State, to specific assistance in curatorial sections. It is pleasing to note that many of the younger volunteers, often recent university graduates, gain good museum experience here that helps them to move on, to our loss, to full employment.

The Board acknowledges with appreciation, support from the Queensland Government, both directly through the annual grant for operational purposes and indirectly through Heritage Trails and Centenary of Federation grants. Support from the Honorable Matt Foley LLB, MLA, Minister for Employment Training and Youth and Minister for the Arts, from Arts Queensland under their new Director General, Ms Marg O'Donnell, and administrative support from the Corporate Administration Agency is acknowledged with our thanks.



Nerolie Withnall
Chairman

ORGANISATIONAL STRUCTURE



1. STATEWIDE MUSEUM SERVICES

As the Queensland Government's instrumentality primarily responsible for the State's cultural and natural heritage collections, the Queensland Museum is committed to the provision of an effective, statewide, museum service. This will enable the development of a coordinated museum industry in Queensland bringing a sense of identity and stability to our large and diverse State from which all communities will benefit.

GOALS

To ensure that all Queenslanders have access to the services of the Queensland Museum irrespective of where they live in Queensland.

To be the lead agency for the development of the museum industry in Queensland.

KEY ISSUES

- Maintenance of the Queensland Museum campuses as a viable network of outstanding museums.
- Delivery of museum products and services via the world-wide web.
- Development of a popular publication program that interprets the cultural and natural history of Queensland.
- Maintenance of a comprehensive Museum Resource Centre Network across Queensland.
- Continued demand for loan kits and other loan resources.
- Development of a range of outreach programs.
- Assistance for regional museums and other cultural facilities.
- Potential addition of 'The Workshops, Railway Museum' to the Queensland Museum Network.

KEY RESULTS

- Refurbishment of exhibitions for John Flynn Place, Cloncurry.
- Delivery of a new exhibition, entitled 'Wildlife of Cape York' for Nature's Powerhouse, Interpretive Centre, Cooktown.
- Development of 'Federation: the Queensland Story' for Cobb and Co campus Toowoomba.
- Delivery of the Magnet Schools Project – a collaboration with the Smithsonian Institute in Washington and Education Queensland to develop museum-based learning in schools.
- *Plants of Greater Brisbane*. More than 400 species of plants were photographed for this new publication, as well as plant communities and habitats.
- Commencement of photographic field work for new publication *Discovery Guide to Outback Queensland*.

HIGHLIGHTS 2000-2001

POPULAR PUBLICATIONS

Wildlife of Tropical North Queensland, the fourth in the Museum's outstanding series of environmental-based reference books, sold 6,500 copies from June/July 2000 until May 2001. The book, which documents the wildlife of the coastal region between Cooktown and Mackay, has been included in the best-seller lists for Cairns almost continually since its release.

Pandora: an archaeological perspective. A reprint of 7,500 copies was issued to coincide with the opening of the Museum of Tropical Queensland. The book was first printed in 1991 and has sold steadily since. The new book updates information on archaeological excavation of the wreck.

Discovery Guide to Outback Queensland. The Museum has received a \$100,000 grant from the Heritage Trails Network of Queensland to produce this book which will be released in June 2002 for the Year of the Outback. The book will interpret the cultural and natural heritage of the region from Mount Isa and Camooweal in the north to Cunnamulla and Thargomindah in the south. It is part of the Museum's Strategic Plan to develop a series of regional guides in partnership with the tourism industry, government and local authorities.

Plants of Greater Brisbane. This lay person's field guide to the flora of the Greater Brisbane Region is scheduled for release in late 2002. It will become the fifth volume in the Museum's

'wild guide' series. The Museum has established partnerships with the Queensland Herbarium and Greening Australia. Discussions are also underway with Brisbane City Council. Photography work on the project has begun and will be completed in late 2001. It will create a comprehensive data base of plant images, an asset that does not currently exist elsewhere.

Two A1 colour posters were produced – Mud Crabs and Dave the Elasmosaur.

TRAVELLING/OFF SITE EXHIBITIONS

Title/Venue	Open/Close	Visitors	Staff Days
Travelling:			
Rainbows In Stone - The Norm Pedley Agate Collection			
Wandoan Information & Juandah Heritage Centre	1.7.00 - 30.6.01	670	2
Women Of The West			
Jondaryan Woolshed	26.8.00 - 3.9.00	6,888	4
Toowoomba Royal Show	28.3.01 - 31.3.01	41,352	4
Pine Rivers Heritage Museum	16.6.01 - 30.6.01	704	4
Old Man Fog			
Museum of Tropical Queensland	25.9.00 - 6.11.00	9,972	12
Cooktown Interpretation Centre	7.4.01 - 13.6.01	1,077	6
Tanks Gallery Cairns	24.6.01 - 30.6.01	670	5
Note: all three touring exhibitions are approximately 100m ² each			
Off Site:			
Australian South Sea Islanders			
Parliamentary Annex, Brisbane	7.4.2001	500	2
Museum On The Mall			
Queen Street Mall, Brisbane	29.6.2001	56,000 (est)	8
Total		117,833	47

ROAD SHOWS

The Sciencentre Roadshow toured for 13 weeks during 2001, presenting its unique school and community science programs to 13,231 people in rural and regional towns. A team of four staff presented science shows and more than 60 hands-on exhibits which were set up as a science centre in community or school halls. Because of uncertainty at the time over longer term funding, the Roadshow did not operate during calendar year 2000.

MUSEUM MAGNET SCHOOLS PROJECT

Museum Magnet Schools ... *seek to extend the boundaries of the traditional classroom setting to instill in children the awe and wonder that museums evoke as keepers of our heritage* (Museum Schools Symposium 95).

The Museum Magnet Schools Project was established to develop classroom based learning tools that incorporate object analysis and museum processes. It aims to bring together the expertise of museums and schools to enhance the learning experiences of students. The project was established by four organisations – the Queensland Museum, Education Queensland, Department of Premier and Cabinet and the Smithsonian Institution in Washington, DC. Over the last twelve months the relevant members of these organisations have established professional relationships that have made the collaboration successful.

Two workshops were run – in June and August 2000. These allowed the contact teachers from the four selected schools the opportunity to learn about museums and incorporate object-based learning ideas into their teaching practice. Further teacher training has continued via the project Website and during school visits by the project coordinator and Queensland Museum personnel.

The project website has been a major achievement. Education Queensland commissioned its own interactive web-based tool kit, which allows users to discuss issues, exchange documents and images and chat live. The new software was operational from April 2001 and has been easily accessed by most team members and students.

In early 2001 the Australian Embassy in Washington invited the Museum Magnet Schools Project to exhibit student work that reflected the achievements of the project's first year. The exhibition opened at the Embassy in June 2001 for two weeks. A major outcome was the strengthening of our relationship with the Museum Magnet Schools in Washington, DC and our education counterparts at the Smithsonian Institution.

MUSEUM LOANS

There was increased demand for Museum loan resources especially in Southeast Queensland. Key results included increased usage of the Loans Service, with a 10% increase in the number of subscribing institutions.

Work during the year led to creation of 10 'Urban Forest' early childhood kits (with Brisbane City Council); 10 'Australian Archaeology' kits and 10 'Stone Tool Technology' kits (with Environmental Protection Agency); the '1901 Federation Trunk', an educational adjunct to the *Queensland 1901* exhibition; 10 'Living in Federation Times - Museum in a Trunk' kits (with the National Trust and Centenary of Federation); 'Bee and Honey Production' kit; 'Vietnam War' kit; 5 arthropod kits; 10 animal homes kits; 2 'Olden Days - At Home' and 2 'Olden Days - Station Life' kits; 'Pirates' kit; 'Multicultural Hats' kit.

Under planning are 7 country loan kits 'Life in a rotting log'; 10 Australian South Sea Islander kits; International Year of the Volunteer kits (celebrating volunteer contributions to Queensland Museum); 10 'Living in Antarctica' kits; 20 museum techniques kits 'Taxidermy Tales' and others.

Museum Loans, in partnership with the Brisbane City Council, won their second *John Herbert Heritage Award* from the National Trust of Queensland for the development of the 'Urban Forest' kits.

THE QUEENSLAND MUSEUM NETWORK

COBB & CO. MUSEUM

GOAL

To tell aspects of the changing story of Queensland for the enjoyment, education and cultural enrichment of the community and visitors in Southern Inland Queensland.

KEY ISSUES

Contribute to the Queensland Museum's Strategic plan in the following areas:

- Provision of museum services throughout Southern Inland Queensland.
- Efficient venue management of the Cobb & Co. campus.
- Development of an expanded Cobb & Co. Museum as part of the Queensland Heritage Trails Network.
- Ongoing support from the Toowoomba City Council and the community.
- Ongoing research and effective collection management of the Queensland Museum's carriage collection.
- Development and implementation of a range of relevant education programs.

KEY RESULTS

- Completion of Stage 2 of the Cobb & Co. Museum.
- Development of new exhibitions with the support of the local community.
- Maintenance of visitor numbers despite the building program.
- Greatly increased school visitations to the Museum.
- Level of funding acquired to support the expanded campus.
- Regional community museum exhibition project coordinated by the Museum Resource Centre for Southern Inland Queensland.

MANAGEMENT COMMITTEE MEMBERS

Chairman - Mr W.W. O'Brien, OBE; Vice Chairman - Dr I. Galloway, BSc(Hons), PhD, MAgSt; Mrs M. Andersen; Mr A.J. Cardell, LLB; Mr G. Healy; Dr D/ Robinson, BSc(Hons), PhD; Mr I. Waples, MIE (Aust) CPEng, LGE; Mr T. Schwenke, JP Qual, MEd, BEd, DipT, ADEng, OMIE Aust (from 23 Feb 2001); Secretary - Mrs D. Tranter, OAM, BA, MLitSt, CT(Sec), GradDipCEd; Mr G. Holmes, BEd, MEd (Admin), CElectEng (until Feb 2001); Mr Z. (Bill) Jelacic, BEd, BA, MEDSt, Dip School Counselling (until 24 Nov 2000).

HIGHLIGHTS 2000-2001

- Local builder F.K. Gardner & Sons Pty Ltd was awarded the contract to build the new Museum. Construction commenced on 8 September 2000. The Museum continued to operate throughout the building project. The building was handed over on 31 May 2001, though rectification of some minor defects and variations are continuing.
- Stage 1 was completed for the opening of the 'Federation: Queensland's Story' exhibition on Australia Day 2001. Toowoomba's official Australia Day celebrations were held at the Museum with 1,200 visitors to the exhibition during the afternoon.
- Successful acquittal of both Commonwealth Government grants for the Federation exhibition drew high praise for the learning outcomes being achieved in the teaching programs based on the Discovering Democracy curriculum. There have been 3,000 students in 110 separate class groups completing the 2-3 hour program.
- Children's holiday programs on the themes of Knights in Shining Armour, Whips, Wheels and Wagons, Christmas Crafts and Back in Time -100 years attracted 758 children.
- Aboriginal Training Workshop 'A Keeping Place or Other Options for Preservation and Protection of our Cultural Heritage' was held on 6 April with 35 attendees from throughout the region. A Language Access officer is now based at the Binangar Language Centre at the Museum. This is a partnership between the Museum and Kombumerri Aboriginal Corporation for Culture.
- Museum received broad community support for its development of Think Link - a tourism marketing project based on the Museum and including cultural heritage and natural environment sites around Toowoomba. Think Link has also been supported by \$150,000 funding grant from the Commonwealth Government under its Regional Assistance Programme, administered by the Department of Employment, Workplace Relations and Small Business.
- Exhibition planning and community consultation has dominated the year's activity. The main displays in the new Museum will focus on 'Toowoomba: the Range, the City and the People'. Other features include Binangar Language Centre, Coach Stop children's discovery centre, 'Kwong Sang Chinese' display and 'We're History' an exhibition planned and designed by 12 year 10 students who are working at the Museum each week for two school terms.
- The Museum Resource Centre for Southern Inland Queensland helped to organise the Darling Downs Small Museum Conference in Gatton in October, two Significant Events workshops in December, and 12 Display Design workshops in May-June. All were well attended by volunteers from the community museums in the region.
- Funding worth \$88,000 has been acquired by the Museum Resource Centre from two sources to develop a coordinated exhibition project in 10 community museums in the region. This project has been well supported by an in-house exhibition designer.

OUTLOOK FOR 2001-2002

- Opening new Museum on 5 October 2001 including launch of the Cultural Pass and a Cavalcade of horse-drawn and vintage and veteran vehicles.
- Maximise local and visitor use of the Museum's facilities and services.
- Open and promote the 10 community museum exhibitions in the region.
- Develop education programs utilising the expertise of the Aboriginal Language Access Officer based at the Museum.
- Undertake first Museum Attendant Traineeship in Queensland and develop a model for community museum/local authority partnerships.
- Implement the *Think Link* tourism marketing project funded by a Commonwealth Government assistance program to regional communities.

MUSEUM OF TROPICAL QUEENSLAND

GOAL

Museum of Tropical Queensland (MTQ) is the Queensland Government's provider of museological services to North Queensland. It operates from a spectacular building on the Townsville waterfront and its exhibits promote 'Discovering Tropical Queensland' in terms of the environment, cultures and seafaring history. The focus of MTQ's research and collections is on The Sea and our Tropical Culture.

KEY ISSUES

- As the northern campus of the Queensland Museum, Museum of Tropical Queensland carries out research, maintains collections and presents displays pertinent to the natural and cultural heritage of tropical Queensland.
- Museum of Tropical Queensland is the worldwide reference centre for corals of the Great Barrier Reef and Staghorn Corals of the world, and seeks to document the diverse tropical marine biota of Queensland.
- The Museum houses the State's Maritime Archaeology department and specialises in telling the story of HMS *Pandora*, the ship that chased the *Bounty* mutineers.

KEY RESULTS

- The newly-opened Museum of Tropical Queensland operated for its first full year, to provide a diverse range of services to north Queensland.
- Services provided to the educational community in northern Queensland increased with 584 various educational group bookings being recorded for the year.
- Educational programs offered were expanded to include 28 new programs based on display content catering to different age groups.
- Operation of the Box Gallery for travelling and community exhibitions commenced with 10 nationally, state or locally produced exhibits being displayed during the year.
- Admissions, Administration and the Gift Shop at Museum of Tropical Queensland made the transition to the GST smoothly.
- The Museum Resource Centre provided professional services to various museums in six shires in the region (Hinchinbrook, Dalrymple, Townsville, Thuringowa, Burdekin, Cardwell).
- The distribution of the very successful *Wildlife of Tropical North Queensland* enhanced the Gift Shop's performance through the year.
- Expansion of the Museum's website has begun with a Web Management Committee being formed from representatives from all sections of the Museum.

MANAGEMENT COMMITTEE

The Management Committee at Museum of Tropical Queensland met six times during the year. The Management Committee published a Yearbook in August 2000, provided an annual report to the Queensland Museum in July 2000 and presented its budget for 2001-2002 to the Queensland Museum in December 2000. The budget was subsequently revised in June.

Chairperson - Mr K. Brazier LS FIS; Vice Chairperson - Dr I. Galloway BSc (Hons), PhD, MAgSt; Secretary - Dr C. Wallace BSc PhD; Members - Prof. H. Choat BSc PhD; Mr N. Gertz; Prof. B. Moulden BA PhD; Mr M. Stoneman; Mr J. Lyons BEc FCPA FITA FAICD AFAIM ACA; Ms G. Mackay BA (Hons) DipTeach; Mr A. Linning; Observer - Dr P. Arnold BSc MSc PhD.

HIGHLIGHTS 2000-2001

- MTQ received 10 awards for architecture, engineering, project management and materials, and the North Queensland Tourism award for Best Tourism Development.
- *Wildlife of Tropical North Queensland* was launched at MTQ in August 2000 with a delegation from Queensland Museum and representatives from various other scientific institutions attending.
- Seven indigenous trainees started work at MTQ, in March 2001, in the areas of Displays, Temporary Display, Education, Marketing, Administration, Front-of-house, Coffee Shop, Collection Management and Building Management. The scheme is funded by Department

of Employment, Training and Industrial Relation's 'Breaking the Unemployment Cycle' program, with incentive funding provided by the Commonwealth Government.

- Thirty-one new Volunteer Guides 'graduated' in May 2001 after completing five weeks of intensive training sessions run by the Museum staff, existing Volunteer Guides and Linsey Plante of the Commercial Studies Centre. This brought the complement of guides to 81.
- The 'Across the Coral Sea, Loyalty Islanders in Queensland' exhibit in the Box Gallery was officially opened by the Hon. Matt Foley in May 2001. The opening was attended by representatives from the South Sea Islander community, local government, Queensland Sugar, Queensland Nickel and the John Oxley Library. MTQ was privileged to be the only display venue in Australia before it was shipped to New Caledonia as a Centenary of Federation gift.
- A special display and programs catering for students from lower primary to secondary school, 'Taxidermy Tales' was devised by Education staff and the Taxidermy Group for National Science Week (30 April - 11May 2001) and was shown in the Panasonic Theatre to approximately 350 students.
- MTQ celebrated its first year of being open to the public in early June 2001. The 'birthday' weekend included back-of-house tours, talks, live performances and special displays.
- Tropical Conservation Section formed a working agreement with Queensland Parks and Wildlife Services to gain physical access to the wreck sites of *Foam*, *SS Yongala* and *SS Gothenburg*, in 2001.
- Many Boards and Committees met in MTQ's Boardroom including the National Maritime Museum, Regional Galleries Association of Queensland and Queensland Tourism.

OUTLOOK FOR 2001-2002

- Major involvement with North Queensland Centenary of Federation celebrations with two major exhibits booked in the Box Gallery and a float in the official parade.
- Expansion of the school-visit program to accommodate demand.
- Development of a node for the Queensland Heritage Trails Network in collaboration with Townsville City Council.
- Completion of the transfer of Queensland Museum's Maritime Section – end of 2001.
- Commencement of regular activities in the newly completed Panasonic Theatre.
- Strategic partnerships with expanding international coral reef infrastructure in Townsville.
- Assist with the development of Cultural Indigenous Centres.

QUEENSLAND SCIENCENTRE

GOAL

To provide high quality hands-on science and technology education programs that help people understand the relationship between science and everyday life by promoting the fun, excitement and curiosity of science and its relevance to everyday experiences; by being a centre for learning about science through active participation; and by promoting the links between people, science, industry and the arts.

KEY ISSUES

- Ensure state-wide recognition as the authoritative source for provision of non-formal science and technology education.
- Exceed public expectations in displays, interpretation and programs.
- Broaden the perspective of science and technology presented by exhibitions and programs.
- Undertake, encourage and support research and disseminate research results that increase the knowledge and understanding of non-formal learning.
- Encourage greater support and financial commitment from the community, private enterprise and governments.
- Promote an understanding of the relationship between science and technology and everyday life through displays, publications and other programs.

KEY RESULTS

- Visitor numbers up 8% on 1999-2000 to 145,340.

- Continued outreach programs, including the Sciencentre Roadshow in 2001, to reach 13,231 visitors in regional and rural towns, and 4,159 metropolitan clients.
- Major sponsorships were secured from Network Ten, The University of Queensland and the Courier-Mail, and grants were received from the Science and Technology Awareness Program and Lucent Technologies Foundation.
- Conceptual and Business Plans were developed for a potential new museum of science and innovation.

MANAGEMENT COMMITTEE

Chairman - Prof. D.J. Nicklin, BScApp, BEcon, PhD, AO; Vice Chairman - Dr I. Galloway, BSc(Hons), PhD, MAgSt; Secretary - Dr G.J. Potter, MSc (Hons), PhD, GradDipEd; Members - Mr R. Bryan, BSc(Hons); Dr J.P. Collie, MB, BS, MHP, FRACMA, FAFPHM (until December 2000); Mr I. Hiley, BCom, AAUQ, FCA, FCIS, MAusIMM; Prof. A. Lister, (gongs yet to be advised); Prof. I. Lowe, BSc, DPhil; Dr B. Piscitelli, MEd, PhD, AO; Dr D. Robinson, BSc(Hons), PhD; Mr T.M. Sherman, BE; Sir Bruce Watson, BE(Elec), BCom, HonDEng; Prof. R.L. Whitmore, BSc(Hons), PhD, DSc, AM (until December 2000).

HIGHLIGHTS 2000-2001

- The Sciencentre received its best annual attendance in four years – 145,340. General public numbers were up 9% on the previous high. An additional 4,159 students participated in local outreach programs involving school based science demonstrations and workshops.
- Significant in-kind sponsorship support was received from Network Ten, and The University of Queensland and the Courier-Mail were major sponsors of the Sciencentre Roadshow. The on-going support of these organisations is very much appreciated.
- The presentation of a breadth of issues in science and technology continued as a priority by providing a program of temporary exhibitions as well as the centre's 180 exhibits. Two temporary exhibitions were presented: 'NRMA RoadZone' (14 December to 22 April) and 'Living Colour' (18 June to 28 October).
- In addition to the temporary exhibitions, the Sciencentre continued to develop programs to enhance the quality and breadth of experiences available to visitors. 'Do and Discover' school holiday programs were presented on six themes (Puzzles, Illusions and Challenges, Photography, Mirrors, Sports Science, Road Safety, and Scientific Discoveries) throughout the year with 891 participants, and daily science shows were available for all visitors.
- Two recruitment and training programs were conducted for volunteers, providing 104 persons who contributed 2,091 days of voluntary work in the Sciencentre, mainly in the exhibition spaces as Explainers. This extensive community support is very much appreciated by staff who, without the contribution of volunteers, would be unable to deliver the breadth and quality of service expected by visitors.
- A Junior Volunteer Program was commenced in early July, enabling young people aged 11-18 years to take a more active role in supporting the Sciencentre and assisting with program delivery, particularly 'Do & Discover' holiday activities and explaining exhibits.
- Sciencentre Membership continues to receive strong support and now exceeds 6,400 family and individual members. The addition of monthly behind the scenes tours of Brisbane's science-related industries and activities has been well supported.
- The Sciencentre continued its research collaboration with Queensland University of Technology, as a joint partner in a three-year study entitled 'Young children's interactive and informal learning in museums'. An additional ARC-funded three-year study of the factors influencing teachers' and students' learning at the Sciencentre Roadshow commenced during the year.
- Three study programs were undertaken at the Sciencentre during the year: Assoc. Prof. Keith Lucas of QUT School of Mathematics, Science and Technology Education undertook two studies - Teachers' perceptions of an innovative educational program for primary school students visiting an interactive science centre, and An investigation of the ways in which volunteer Explainers contribute to the learning of science concepts by school students in visiting groups. Additionally a German pre-service primary teacher undertook a three-month placement at the Sciencentre, as did a staff member from the Science Museum, London.
- The Sciencentre's pricing, notification and point of sales systems were all in place for the 1 July transition to the new tax system. No complaints or negative reactions were received to the price adjustments, which were all less than 10%.
- Conceptual and Business Plans were prepared for a proposed new museum of science and innovation as a component of a Queensland Synchrotron research facility.

OUTLOOK FOR 2001-2002

- Further expand and diversify the topics presented, and the manner of presentation, by developing displays on Innovative Queenslanders and Illusions, Puzzles and Science Challenges.
- Operate the Sciencentre Roadshow as a major outreach program travelling annually throughout Queensland.
- Initiate an annual award program for Queensland secondary students to encourage, acknowledge and celebrate innovation and entrepreneurship.
- Maintain an on-going program of temporary exhibitions, daily science shows, public lectures, 'Do and Discover' school holiday programs, and sleepovers.
- Work with State Government and industry to increase public awareness of science-technology developments and innovations.
- Continue the development of education support for exhibitions, and expand the relationship with Education Queensland to develop programs of mutual benefit.
- Design and build exhibits for the Sciencentre and the Roadshow.
- Establish a schedule for replacement of existing 'permanent' displays.

MUSEUM OF NORTH WESTERN QUEENSLAND

GOALS

The Museum of North Western Queensland documents and preserves the mining heritage of the Carpentaria Mineral Province. The Frank Aston Underground Museum portrays the early life style of the gouger miners and settlers of the region, and displays the mineral and gemstone 'Earth's Treasures'.

KEY ISSUES

- Building on the earlier announcement of \$3 million Commonwealth funding from the Queensland Heritage Trails Network, a further \$3.98 million from the State Government Millennium Arts 2000 Project was announced to develop an integrated tourist attraction for Mount Isa to include, at least, the Frank Aston Underground Museum and the Riversleigh Interpretation Centre.
- A further \$2 million has been committed to the project from the Mount Isa City Council and a joint announcement of the total funding was made in Mount Isa in June.
- A consultancy to the Heritage Trails Network began a study to investigate the best possible designs for the attraction and this work is anticipated to continue in the second half of 2001.
- Mr Roly McKay, first and only Director of the Museum, retired in October 2000. He has not been replaced pending the outcome of the current consultancy.

MANAGEMENT COMMITTEE

Chairman – Mr S. Wollaston; Vice Chairman – Dr P.A. Jell, BSc, PhD; Secretary – Mr R. McKay (to Oct 2000); Mrs S. McGrady, Ms Kate Campbell (Mount Isa Mines), Mr L. Henderson (Mount Isa Rotary Club), Mrs F. Donovan (Mount Isa City Council); Museum consultants – Mr F. Aston, Mrs A. Miller.

HIGHLIGHTS 2000-2001

- Announcement of nearly \$9 million to develop an integrated tourist attraction for Mount Isa and the involvement of the Frank Aston Underground Museum site in that development.
- The Museum of North Western Queensland continued to be greatly assisted by community service workers under the supervision of the Director and Casual Engineer, Mr J. Weissenberg. The Department of Corrective Services is to be thanked for its considerable cooperation through yet another year.

SOUTHBANK CAMPUS OF THE QUEENSLAND MUSEUM

KEY ISSUES

- Enhancing the community's awareness of the campus services and exhibitions, to increase visitor numbers.
- Provision of a changing program of long-term and short-term exhibitions.
- Maintenance of existing long-term exhibitions.
- Improving customer service.
- Maintaining high quality, good value commercial services.
- Quality control of information delivery to visitors.

KEY RESULTS

- Front and rear-end evaluations and analysis conducted for all short and long-term exhibitions.
- Achievement of projected visitor numbers.
- Growth of new audiences, in particular indigenous and other culturally diverse communities.
- Ongoing targeted advertising campaign in publications continued to raise our public profile amongst our target markets.
- High satisfaction levels and 'word of mouth' referrals indicate a successful mix between products and public relations strategy.
- Provision of 23 short-term exhibitions for the Queensland Museum South Bank campus, including 6 community access exhibitions and 1 'rapid response' exhibition (topical issues).
- Collaboration with QUT and other Brisbane museums in a research project into early childhood learning in museums.

HIGHLIGHTS 2000-2001

- A focus on developing new markets through high profile launches to major blockbusters.
- Queensland Museum Marketing has been successful in attracting additional resources through sponsorship to Museum activities. A Queensland Museum Venue Hire Program encourages the business community to access various venues throughout the Museum for corporate functions.
- Successful promotional activity conducted, raising the Museum's profile and maximising visitation to the Museum.
- A greater involvement established with other Cultural Centre and South Bank venues through joint and cross-promotional activities.
- Visitor Services Officers continue to provide our major 'customer-service' role for visitors to the Museum. This group of some 25 staff are employed as 'meet and greet' front line staff and to provide basic interpretation. Some of these Officers provide language assistance as Australian foreign language speaking interpreters.
- With a view to cultivating an ongoing relationship between children and the Museum the Queensland Museum Kids Club, birthday parties and Museum sleepovers were provided.
- Successful implementation of a Marketing Cultural Diversity project in conjunction with the Australia Council and Arts Queensland to develop ethnic audiences. A regular quarterly program titled 'East Meets West' is in place where Chinese artists and performers showcase their art and culture for the enjoyment of Museum visitors. An exhibition 'Spiritual Treasures of China' was launched in August, 2000. This pilot project will be included as a Case Study in the publication *Beat a Different Drum*, a handbook for marketing Cultural Diversity in the Arts.
- Regular familiarisations of the Museum continued for volunteers and other marketing representatives from Brisbane Marketing, Tourism Queensland, tour operators, tour bus drivers, concierges from major Brisbane Hotels and conference organisers.
- Through the areas of cultural tourism, and as part of a steering committee commissioned by the Brisbane City Council, developed a Cultural Tourism Framework, strengthened existing relationships with their Office of Economic Development, Brisbane Marketing, Tourism Queensland, Office of State Development and other stakeholders.

OUTLOOK FOR 2001-2002

- Develop and undertake regular market research into existing and potential target markets through development of visitor profiles.

- Continue development of new packages to encourage other overseas, interstate, intrastate and local markets.
- Continue to further develop the innovative Marketing and product development pilot project in conjunction with the Australia Council, Brisbane Marketing and Tourism Queensland and Arts Queensland.
- Continue to undertake and develop more open communication and greater involvement with the Chinese and other ethnic communities.
- Increase development of cooperative and cross-promotional marketing opportunities through the South Bank Business Association.
- Continue to promote the Queensland Museum as a venue for corporate functions and encourage participation of the corporate sector in Queensland Museum activities.
- Continue to produce and present high profile launches for major exhibitions.
- Continue to maintain the targeted advertising and promotional strategy to reach identified target markets.
- Develop forward planning for sponsorship of future exhibitions and display space.

TEMPORARY EXHIBITIONS

Title	Note	Open/Close	Area (m ²)	Visitors (paying)	Cost (excl. staff)	Staff Days
Circus *	1	- 16 Jul	325	(1,396)	\$11,927	51
Signed, Sealed, Delivered	2	- 23 Jul	200	26,445	\$150	7
Oxley Creek Catchment	3	22 Jul - 10 Sep	105	47,899	\$150	17
Sacred Treasures of China *	4	10 Aug - 29 Sep	525	(5,378)	\$82,577	53
International Lace making	5	9 Sep - 10 Sep	50	2,146	\$10	2
Australians Caring for Refugees	6	23 Sep - 19 Nov	155	51,179	\$150	16
The Music Makers	7	21 Oct - 19 Nov	125	27,309	\$150	18
Wildlife in Art	8	28 Oct - 10 Dec	325	34,039	\$150	12
Wearable Art	9	30 Oct - 26 Nov	20	22,531	\$150	10
Terra Nova	10	8 Dec - 21 Jan	75	37,418	\$340	10
Pol Art	11	8 Dec - 28 Jan	210	47,264	\$713	35
Roses and Red Earth	12	8 Dec - 18 Feb	125	63,014	\$1,374	15
Museum Menagerie *	13	6 Jan - 28 Jan	325	(9,389)	\$3,492	345
History of Forestry	14	29 Jan - 25 Feb	75	20,454	\$200	8
Armlinks	15	6 Feb - 29 Apr	55	78,568	\$1,874	10
Dame Mary Durack Outback Crafts	16	10 Feb - 25 Mar	325	35,422	\$917	14
Antarctic Display	17	1 Mar - 8 Mar	10	5,959	\$20	2
Refined White	18	2 Mar - 25 Mar	200	20,531	\$3,710	6
Victorian Bird Case	19	26 Mar - 30 Jun	0.5	94,202	\$5	1
Body Art *	20	12 Apr - 30 Jun	525	(11,952)	\$73,674	56
Science Week	21	1 May - 13 May	50	14,738	\$90	3
Dingoes	22	2 May - 30 Jun	2	52,386	\$20	1
Bush Lives	23	26 May - 30 Jun	70	24,613	\$2,518	6

* Denotes a paying exhibition; visitor numbers are in (brackets). All other visitor numbers are total visitors to the Museum during the periods of free exhibitions.

NOTES:

1. A history of circuses in Australia, curated and produced by the Powerhouse Museum, Sydney.
2. A history of postage in Australia, curated and produced by the National Archives, Canberra.
3. Exhibitions Access Program, Oxley Creek Past Present and Future, organised by the Oxley Creek Catchment Association Inc.
4. Queensland Museum and the Buddhist Association joint exhibition featuring original and reproduction artefacts from Beijing and surrounding areas.
5. Exhibition Access Program, Queensland Lace Guild display and demonstration in the foyer.
6. Exhibition Access Program, Austcare Queensland exhibition.
7. Exhibition Access Program, Instrument Makers Association exhibition of Renaissance flutes to modern guitars.
8. Exhibition Access Program, Queensland Wildlife Artists Society, paintings, sculptures and jewelry.

9. Exhibition Access Program, 2220 RAQ Wearable Art Award garments sponsored by Arts Queensland.
10. Terra Nova: a land of milk and honey, a celebration of Polish immigration and settlement in Australia – 50 years on. One of three (10,11,12) exhibitions under the Polska – a celebration of Polish culture in Australia, banner of exhibitions over Christmas.
11. Pol-Art, accompanies Pol- Art 200 the 8th Festival of Polish Visual and Performing Arts, exhibition at the QM was of contemporary artwork by Polish people.
12. Roses and Red Earth: Polish Folk Art in Australian, curated by Maria Wronska-Friend toured by Perc Tucker Gallery, Townsville.
13. Museum Menagerie Madness holiday program A-Z of a clutter of strange and curious items in conjunction with the Build-a-Bug competition for children and adults.
14. DPI staged exhibition depicting '100 Years of Forestry' supported with historical photographs, artefacts and video.
15. Armlinks looks at the creation and use of arm adornments in traditional and contemporary Northern Territory Cultures, developed and toured with the assistance of Artback, the National Exhibitions Touring Structure for the Northern Territory.
16. Exhibition Access Program, the annual Craft Awards organised by the Australian Stockman's Hall of Fame, Longreach.
17. Quickly organised foyer filler.
18. Australian Sugar Industry Museum exhibition exploring the effect of the White Australia Policy on the South Sea Islander people.
19. Quickly organised foyer filler.
20. Australian Museum exhibition exploring different ways people adorn their bodies and the reasons and meaning behind them, supported by video, artefacts, images, interactive chair and tattoo studio (non functional).
21. 'Meet the Curator' in Void 1 for Science Week.
22. Rapid Response display to Dingo culling and the article in the Courier Mail interviewing Mammals Curator Dr Steve van Dyck.
23. An Historic Houses Trust exhibition of eight western NSW families' stories of innovation, imagination and determination in the ways of land management.

EDUCATION SERVICES

- A number of value-added activities were provided for visiting school students and teachers. These included 'Animal Classification' and 'Life in the Past' workshops, general guided tours, display introductions, behind-the-scenes tours and special interest talks. A total of 122 activity sessions were run with 3,313 Museum visitors.
- Programs of themed, interactive workshops for early childhood visitors were held during the year including 'Bugs and Beasties' (insects) and 'Flap, Flutter, Fly' (flying animals and machines). A total of 47 sessions attracted 1,165 children.
- Educational resources and workshops were developed to accompany a number of exhibitions, particularly 'Queensland 1901', 'Objects as Art'. After-hours exhibition previews were run for teachers to promote 'Queensland 1901' (two sessions) and 'Body Art'.
- Presentations were given for teachers-in-training from a number of Brisbane tertiary institutions. These covered the relevance of the Museum's products to the curriculum and ways of accessing resources and programs.
- A holiday activity area for families was staged within the 'Museum Menagerie Madness' exhibition.
- A number of workshops for teachers on the Museum's role and its educational resources were presented at teacher in-service days, including the SOSE/Junior History Day run by the Queensland History Teachers' Association. 'Frogs in the Classroom' workshops were run with primary science teachers at three in-service events held in Brisbane and Toowoomba.
- Two teacher orientation nights were run at the Museum. Curatorial staff introduced teachers to the Museum's collections and research work, while education staff gave guided tours of the Museum's exhibitions. Teachers also learnt how the Museum's educational resources can be used to enhance their class programs.
- The QUT Collaborative Research Project for Early Childhood Learning in Museums has been progressing well with the West End State School making three visits.

OUTLOOK FOR 2001-2002

- Opening of a new exhibition 'In the Swim - history of competitive swimming in Queensland' to coincide with the Goodwill Games.
- An exciting program of temporary exhibitions is planned for the next financial year. This includes: 'Tasmanian Tiger - the Mystery of the Thylacine' from September 8 to November 25; 'Anne Frank' and 'Courage to Care' from September 22 to November 18; 'Australia's Lost Kingdom' from December 15 to April 7; and 'Vanishing Queensland' from December 8 to late January.

LANDS, MAPPING AND SURVEYING BRANCH

Advisory Committee: Acting Chairperson - Dr D. J. Robinson, BSc (Hons), PhD; Curator, Member and Secretary - Mr W. S. Kitson, BSurv, Grad Dip (Com Mus Man), LS; Member - Dr B. Crozier, BA (Hons), MA, PhD.

The Curator, Bill Kitson assisted with the Centenary of Federation project on the 'Queensland Border Survey'. The display, 'World War II Mapping', developed by the Branch, is currently touring and has been shown at Landsborough and St George.

RAILWAY HISTORICAL MUSEUM

Advisory Committee: Chairperson - Mr G.C. Carter, BA, Cert. Eng.; (to 15/7/2000)
Vice-chairperson - Dr D. J. Robinson, BSc (Hons), PhD; Members - Dr B. Crozier, BA (Hons), MA, PhD; Mr G. Wilson.

With all parties concentrating on the Workshops project, the Advisory Committee did not meet during the year. Its responsibilities are expected to be integrated when the final Workshops announcements are made. The Workshops project, the largest of the Centenary of Federation projects in Queensland funded under Heritage Trails, progressed rapidly during the year, with the contract for design and development of the museum component awarded to the Carson Group and Desmond Freeman Associates. The Queensland Museum continued to provide advisory input into the project. There were indications that an announcement would be made early in the next financial year, that the Queensland Museum was to be the operator of the Museum component of the Workshops project, incorporating the Railway Historical Centre that includes the Museum and Archives collections. Accessioning of objects accelerated, to assist the selection of items required for exhibition.

WOODWORKS

Management Committee: Chairperson - Mr T. Willett, Dip For, BSc (For); Vice-Chairperson - Dr D. J. Robinson, BSc, PhD; Member - Cr M. Venardos, Mayor, Cooloola Shire; Member - Mrs D. Horne, President, Gympie & District Historical Society; Secretary - Mr G. Smith, Manager, WoodWorks.

Volunteer person days have increased because of the active involvement of the Gympie & District Woodworkers' Club in support of the museum. Visitor numbers show a decline of 6.7% over 1999/2000 and 15.4% over 1998/99. The 1998/99 figures however are skewed by abnormally large sawmill day attendance brought about by active television documentary upon the forestry industry which featured WoodWorks. Shop income remains consistently over \$2.00 per capita which is a reflection of the product available and the interest of a specific target audience. An increase in entry fee income is a result of a price variation from 1st July 2000.

The Management Committee met four times throughout the year. Main topics of discussion were:

- Use of the relocated King Street building by the Gympie & District Woodworkers' Club and the Club's ongoing involvement with the museum.
- The youth training scheme in the blacksmith shop implemented in conjunction with the Cooloola Shire Council.
- The feasibility of tourist road sign installations in conjunction with the DPI Gympie Conference Centre.

MUSEUM RESOURCE CENTRE NETWORK

The Museum Development Officer (MDO) project serves Community Museums, Galleries and Keeping Places across some regions of Queensland.

Gregor McCaskie supports Community Museums in the Toowoomba & the Golden West region; Lindsay Bedogni, the Sunshine Coast region; Maria Friend, the Cairns region; Linda Upton, central Queensland from Rockhampton; Fiona Mohr, Townsville - Thuringowa and associated Shires. The Queensland Museum also contributed directly to regional services to Community Museums.

Some major activities were:

- Toowoomba and the Golden West:- Received two grants (Arts Queensland and Centenary of Federation) totaling \$89,000. Currently working with 8 shires and 13 heritage groups in

the planning and installation of displays for Centenary of Federation. Planning and organising the Darling Downs Small Museums Conference at Gatton with a record 91 participants. The MDO completed Workplace Trainer and Assessor Cert. IV in preparation for acting as trainer and assessor for Display Installation and Dismantling pilot later this year and delivered a number of workshops including Preventative Conservation and Displaying Planning. Participation in a number of seminars to develop training, in particular: Significant events (through (MAQ) and Framing the Future. Production of newsletter 'The Showcase' and circulation to about 100 groups and individuals.

- Sunshine Coast:- Recruitment of Cooloola Shire Council to Museum Resource centre network. Award of Centenary of Federation funding of \$64,400 to MRC and Local Studies Unit to develop the Noosa Shire Digital Heritage Network; Assistance with gaining sector funding of \$120,107 for year (however, period may not fit neatly within financial year). Establishment of Cooloola Heritage Network of local museum, gallery and related heritage groups. Ongoing program of workshop, strategic planning and training sessions for four MRC museum networks.
- Far North Queensland:- The Association of Far North Qld Museums and Historical Societies, an umbrella body for the majority of community heritage organisation, has been in place for several years. The MDO assisted with its incorporation, development of a Strategic Plan and securing a Gaming Machines grant for publication of a professional brochure advertising 22 local museums. A series of workshops, mainly on Organisation of Exhibition, Strategic Plan and Collection Management were delivered to over 20 local museums and art galleries, attracting over 140 participants. The MDO gave a presentation at the national Museums Australia Conference in Canberra in April 2001 entitled 'Stories to be told, stories to be forgotten: history and museums in Far North Qld', in which the process of reconstructing and representing local history was assessed. Overseeing and assessment of a Cairns Regional Museum Feasibility Study, conducted by Australian Museum Business Services and KPMG Cairns.
- Central Queensland:- Secured operational funding support from Duaranga Shire Council, Peak Downs Shire Council, Livingstone Shire Council, Gladstone City Council, Calliope Shire Council, Emerald Shire Council and Rockhampton City Council continued its support. Work with the Australian South Sea Islander community contributed to the establishment of the first Australian South Sea Islander Museum, and to the Livingstone Shire Council's \$96,748 Centenary of Federation project 'Trail of Endurance A Journey from Paradise'. Policy workshops were held with Mount Morgan Historical Museum Inc, Byfield and District Historical Society, and Emerald and District Historical Society and Strategic Planning with Australian Country Hospital Heritage Association.
- Townsville Region:- 10 workshops were conducted including, Be Prepared, Disaster Planning; Computer Cataloging; Collection Management; Exhibition display and labeling; Strategic Planning; Significant Events – Marketing & Exhibition Development; Conservation – photographic preservation. Grants totaling \$422,900 were secured to develop displays for 13 museums. Reports were written for, Strategic Plan for Ravenswood Preservation & Restoration Group; Strategic Plan for Townsville City Council – Townsville Museum; Concept Plan for Burdekin Shire Council - Brandon Heritage Precinct; Development Plan (draft) for Townsville City Council – Townsville Interpretive Centre.
- Queensland Museum:- The Senior Conservator delivered Preventive Conservation workshops and seminars and was commissioned to undertake Conservation Survey and Management Plans and Preventive Conservation reports for the Pine Rivers Heritage Centre and The Big Rig Oil and Gas Project, Roma. Input was also provided to the Heritage Trails Qantas Museum, Longreach, and the Lark Quarry project, Winton. Qld Rail and Carson Group representatives at the Ipswich Rail workshops were advised on extent of restoration/detailing of railway stock for their exhibitions. Conservation and other Museum staff participated in the Framing the Future project coordinated through MA(Q)/RGA(Q) TPDP. This resulted in delivery of an online pilot for a preventive conservation unit of the National Training Package for Museums and Libraries and the development of criteria recognised by industry as essential requirements to train and assess Preventive Conservation units of the National Training Package. The Director, Cultural Heritage contributed to the South East Queensland community museums annual conference, organised by the Redland Museum at Cleveland.

OUTLOOK FOR 2000-2001

- Until staff are appointed to the Workshops rail museum project at North Ipswich, the Cultural Heritage Program will continue to provide input into the development of that museum.
- Further avenues will be explored to secure funds to expand the Museum Development Officer program to cover all community museums and galleries across the State.

2. MUSEUM EXPERIENCE

A primary objective of the Museum is to provide lifelong learning opportunities that meet the needs and expectations of its broad audience, at all stages of their lives. The Museum recognises that a wide range of other factors determine the success or otherwise of a museum experience. They include the physical experience (including the technology being used), the feelings and social interactions of the visitor. The Museum is committed to continually researching and improving the quality of museum experiences, and recognises that the needs of its visitors and other users are varied and changing.

GOAL

To create an experience that takes Museum visitors on a lifelong journey of discovery ... destination 'understanding'.

KEY ISSUES

- Commencement of planning to launch a new era of exhibitions at Queensland Museum South Bank.
- Challenge of increase of commitment to maintain exhibitions resulting from the opening of the new, enlarged Museum of Tropical Queensland in Townsville, and the Cobb and Co. Museum in Toowoomba.
- Growth of the web-site and consequent demands for staff resources.
- Planning to develop touring and virtual exhibitions to accompany permanent exhibitions.
- Improvement of project-management skills and capacity within staff by training.
- Need to develop understanding of audiences and informal learning methods.
- Need to provide training and development of staff and exposure to international developments in museum communications and exhibition design.
- Changes in the operating environment of schools.
- Continued strong demand for Museum lending of educational resources.

KEY RESULTS

- Completion of the following new long-term exhibitions:
'Objects as Art: Art of the Indigenous Cultures of Queensland', Queensland Museum, South Bank;
'Queensland in 1901', Centenary of Federation project, Queensland Museum, South Bank.
- Completion of temporary exhibitions and other projects:
Supplying 2D and promotional graphics for temporary exhibitions, including 'Polska', 'Museum Menagerie Madness' and 'Body Art'.
- The successful 'Worth Seeing' project, which consisted of poster, flyer, cover for education kit, covers for video kit and exhibition graphics, was completed.

OUTLOOK FOR 2001- 2002

- New exhibition 'Discover Queensland' for the Southbank campus.
- New exhibitions 'Toowoomba Gallery' and 'Discovery Space' for Cobb and Co. Museum, Toowoomba.
- New exhibition 'In the Swim - a history of swimming in Queensland' for the Southbank campus.
- New exhibition 'Mindbenders' for the Sciencentre.
- Sciencentre Corporate Style Guide.

INQUIRY CENTRE

- As a marketing tool, the Inquiry Centre is being promoted as the *iCentre*. The subjects of public inquiries followed a similar pattern to last financial year's. Again, insects were the most frequent subjects, followed by reptiles and spiders. Together these three groups represented more than half of the total inquiries.
- The *iCentre* had an increasing involvement with the Museum's website and became responsible for updating the content and dealing with responses. While website inquiries numbered almost 1,000, they are increasing and, in the future, will represent a major part

of the *iCentre's* functions. Thirty-eight of the *iCentre's* information leaflets were revised and placed on the website.

- A series of temporary and topical exhibitions were presented: bird nests, wasps and their nests, endangered butterflies, a Gordon Highlander uniform, Sensational Sea Creatures, tobacco pipes, Memoirs of the Queensland Museum, and Australian South Sea Islanders. This last display was to commemorate the State's recognition of Australian South Sea Islanders as a distinct cultural group.

3. RESEARCH AND SCHOLARSHIP

The authority with which the Queensland Museum communicates on a variety of subjects is based on the Museum's long term commitment to high quality scholarship and research. This provides credibility to the Museum's public programs and differentiates the Museum from other organisations that provide education-based entertainment.

GOAL

To increase understanding and appreciation of Queensland's natural and cultural heritage through original research with particular reference to the State collections.

NATURAL ENVIRONMENT PROGRAM

KEY ISSUES

Publication of research results must remain a high priority as the final and most critical phase of study of our natural environment. Only by publishing the results of research can it be deemed complete.

KEY RESULTS

- An increase of 58% in competitive research grants and 15% in consultancies won, as compared to the previous year.
- More than 100 research papers disseminating results of research.
- Provision of the authoritative base in the natural sciences for the Museum's public and professional programs, in particular the new exhibitions in Cooktown, Richmond, Winton and Brisbane.
- Collaborative studies with international, national and local institutions increased throughout the year for Sessile Marine Invertebrates, Corals, Tropical Natural History and Tropical Conservation.

EXCELLENCE IN RESEARCH

- Research continued into the status and conservation of the False Water-rat, *Xeromys myoides*, at Coomera, SE Queensland. Against a backdrop of intensive coastal development, monthly surveys were undertaken to monitor the species at its most southerly known population.
- The dung beetles *Aptenocanthon*, which has diversified at high altitudes in the Wet Tropics, was revised in collaboration with Mr R. Storey of DPI.
- A collaboration has commenced with a research group at Imperial College/Natural History Museum in London in a global analysis of the evolution of community structure in scarabaeine dung beetles. Data from 70 Queensland Museum sites will be included.
- Collaborative research on the parasitoid complex of *Fergusonina* fly galls on paperbarks, *Melaleuca quinquenervia*, with Dr John Goolsby of the United States Department of Agriculture, Australian Biological Control Laboratory was completed.
- Revision of the Australasian species of the eulophid *Astichus* continues. These are specialist parasitoids of beetles of the family Ciidae that inhabit polyporous fungi. This project is complemented by an ongoing revision of the Australian Ciidae by Dr John Lawrence (Honorary Research Fellow).
- Honorary Research Fellow Rudy Kohout continued his taxonomic work on ants of the genus *Polyrhachis* supported by in part by ARC and ABRS funds and by revenue generated through identifying ants for several systematic and ecological projects.
- Collaboration with AstraZeneca R&D Griffith University continued, for the 8th year, and several species have been discovered to have biomedically important chemicals. One species in particular was found to contain a chemical compound with the most promising biomedical activity discovered to date (with therapeutic cardiovascular activity), and potentially representing the most promising lead drug candidate so far over the 8 year program. These bioactive species are all new to science and their description is currently in progress.
- A five year project was completed, in collaboration with CSIRO Marine Research and the Australian Institute of Marine Science, surveying the megabenthos of the inter-reef region of the Great Barrier Reef, including monitoring and measuring growth, reproduction, recruitment and mortality of epibenthic marine invertebrates.

- New projects commenced on 'Microbial and macrobenthic diversity of seamount faunas in the western and eastern Coral Sea' (in collaboration with ORSTOM Centre de Noumea and the University of the Sunshine Coast); 'Biodiversity and pharmaceutical potential of Indonesian sessile marine invertebrates' (with INI RADEF and Universitas Udayana, Indonesia); and 'Taxonomic surveys of Introduced Marine Pests (IMPs) from baseline surveys of Queensland Ports and Harbours' (with James Cook University, Central Queensland University and SKM Environmental).
- Dr J.N.A. Hooper completed writing and editing a textbook on sponge taxonomy – 'Systema Porifera. A guide to the classification of sponges' to be published by Plenum, New York, in 2 volumes – representing a labour of over 8 years and collaboration between 32 authors from 20 countries. Expected date of publication is early in 2002.
- A new species of unicornfish *Naso* was first identified from specimens collected off Stradbroke Island. On investigation, it was later found in various localities between the Great Barrier Reef and Natal, South Africa. Research into the taxonomy of related *Naso* also resulted in the recognition of an additional species from the western Pacific.
- Dr Robert Adlard, Curator of Protozoa, has been awarded a grant funded by FRDC/FRRF to study disease of commercial species of bivalve. This study will provide a platform for the development of scientifically-defensible zoning and surveillance of aquatic disease in Australia and will provide a transparent health audit for management decisions on imports and exports of shellfish.
- The Curator of Protozoa hosted a meeting at their request with a European Union Commission team (Dr Lorenzo Terzi - Head of Mission) who were conducting a veterinary inspection and health audit of Australia's capabilities in the diagnostics of infectious animal disease.
- An ABRS grant to study the blood-borne parasitic fauna of Australia's birds was awarded to Drs Robert Adlard and Mike Peirce of the Protozoa Section.
- Dr Lester Cannon, Senior Curator, Worms, was awarded an ABRS grant for the study of interstitial turbellarian worm fauna. To assist he has appointed Dr Rick Hochberg, a recent graduate of the University of New Hampshire who completed his doctoral studies on the phylogeny of the interstitial phylum Gastrotricha.
- Dr Mal Bryant, Senior Technician, independently won a grant from ABRS for a study of the Nematomorpha or Gordian worms, parasites of insects. These are of particular public interest at the Inquiry Centre.
- Cooperation (as co-supervision and field manager), continued with the Centre for Drug Design & Development, University of Queensland on venom research of diverse spiders, including funnelwebs from Fraser Island.
- Data gathering, development and testing of the first Interactive Key to the identification of spider families was carried on through the year.
- Peter Davie, Senior Curator Crustacea, was invited to participate in a workshop at the National University of Singapore from 27 September to 23 October 2000. Peter was one of three principal researchers, the others being Dr Peter Ng, of the National University of Singapore, and Dr Daniele Guinot of the Museum National d'Histoire Naturelle in Paris. The main intention was to produce a checklist of the species of world Brachyura (crabs), review the family concepts, and provide new family and subfamily diagnoses. The checklist has now been finalised with 6,525 species. This work is a major advance in our knowledge of marine biodiversity internationally, and will be an invaluable tool for Queensland and Australian researchers, and ecological managers.
- Dr Yasuo Fukui, Assistant Professor at Naniwa College, Osaka, Japan, departed in April after spending a year in the Crustacea Section working on the taxonomy, life histories, and behaviour of intertidal mangrove crabs. His work will make a major contribution towards understanding our local crab fauna. Dr Fukui and the Senior Curator, Peter Davie, are collaborating on research describing new intertidal crabs from Japan and Australia.
- The Crustacea section is playing an important role in identifying potential introduced marine pests to Queensland and other Australian ports. The first Australian record of a Japanese swimming crab (*Charybdis japonicus*) was confirmed from Port Adelaide, SA. This has led to a monitoring program to assess potential threats to the local environment.
- Dr Alex Cook, Senior Curator of Invertebrate Palaeontology, is taking part in a world-wide review of fossil gastropods from the Palaeozoic with colleagues from China, USA, Czech Republic, and Germany. In August 2000 Dr Alex Nutzel and Dr Cook commenced work on new fossil gastropods from Western Australia dating from just after a major world wide extinction event.
- Scott Hocknull, Curator of Vertebrate Palaeontology, has commenced research on the palaeoecology, palaeoclimatology and taxonomy of cave deposit faunas in central Queensland, with private industry support, as well as continuing his research into fossil dragon and skink lizards.

- In recognition of her lifetime research work, Honorary Associate Dr Patricia Mather AO was made a Foreign Member of the Linnean Society of London (FMLS) in June 2001, one of a total of 50 persons world wide.
- Honorary Research Fellow Dr Sue Turner continued her research on comparative sites in Scotland and Northumberland (especially early tetrapod tooth histology) and Gondwanan sites in Ghana and Brazil, carrying out comparative research at the Museum of Natural History, Paris in February 2001, Academy of Sciences, Philadelphia, May 2001 and Hancock Museum, Newcastle upon Tyne, UK, May 2001.
- Museum of Tropical Queensland Director, Dr Carden Wallace, completed a four day coral surveying and collection trip to Bali, Indonesia in October 2000, followed by the Ninth International Coral Reef Symposium in Bali, Indonesia where she presented a plenary talk: 'Journey to the Heart of the Centre', and dual collaborative research papers with international colleagues.
- Dr Brian Rosen, Research Scientist at the Natural History Museum in London, visited MTQ in November/December 2000, to work with Dr Carden Wallace on evolution of *Acropora* corals using Natural History Museum fossil collections.
- The Corals section conducted research trips to the northern Great Barrier Reef (December 2000) and the Coral Sea (April 2001), sponsored by the Undersea Explorer Company, to obtain staghorn coral samples for genetic research on the evolution of these corals.
- Collaborative studies (with Dr Alastair Birtles, Dept Tourism, James Cook University and Honorary, MTQ; Peter Valentine (TESAG, James Cook University), and Andrew Dunstan (*Undersea Explorer*, Port Douglas)) continued, concentrating on documentation of interactions between whales and swimmers during commercial swim programs and on spatial and temporal patterns in the occurrence of individually recognised whales. Field work was conducted during June-July 2000 on *Undersea Explorer*. The project was also included in a general article on minke whales in the April 2001 issue of *National Geographic Magazine*.

COMMUNICATING RESEARCH RESULTS

Information on the State's biodiversity remains the fundamental product of the Program. Well-researched collections are the basic tools for understanding biodiversity.

- All curatorial staff have been involved in delivering lectures, workshops and practical fieldwork experience to a wide range of community groups, schools, service clubs and universities and as part of the Museum's various public lecture series.
- Through the organisation of Dr Robert Paterson, Honorary Research Fellow, the Museum hosted the international Humpback Whale Conference 2000 (a sequel to the first Humpback Whale Conference, Queensland Museum, 1990) which was attended by 85 national and international registrants.
- Dr Chris Burwell, Curator of Higher Entomology, played an important role in detecting the incursion of Red Imported Fire Ants, *Solenopsis invicta*, in Queensland. Specimens sent to the Queensland Museum from the Port of Brisbane Authority were identified as a species of exotic fire ant. Simultaneously, specimens from Richlands were identified as fire ants by the Queensland Department of Primary Industries. The identification was confirmed independently by CSIRO Entomology, Canberra.
- The Museum was a major participant in the National Science Week (8-13th May), Brainwaves Science Festival, providing public demonstrations, talks, behind the scenes tours, biodiversity displays in the galleries and a public forum/panel discussion on 'Is Science one step ahead of disease? Exploring healthy biodiversity', sponsored by the CRC for Vaccine Technology.
- 'Sensational Sea Creatures', a sticker book aimed at late primary - early secondary students, written by Museum staff and published in the Sunday Mail, was circulated to approximately 700,000 readers throughout the state in October 2000.
- Development of a web site on 'The Variety of Life' was initiated, incorporating Queensland species as examples, in collaboration with the UQ Department of Zoology and Entomology. The site is intended to form the basis of a marine biology field course and field guide to prominent marine invertebrates of Queensland, and to be used as a digital training manual on marine invertebrate biology for a series of Marine Biology Workshops proposed as a joint venture between the UQ, the Coastal CRC, the QM and the Australian Museum.
- Dr Robert Adlard, Curator of Protozoa spoke at a Workshop on Zoning & Surveillance for Aquatic Animal Disease at the Canberra Office of the Chief Veterinary Officer, Agriculture Fisheries & Forestry, Australia.

- The Curator of Protozoa ran a workshop on oyster disease at the invitation of the American Fisheries Society (Fish Health Section) during their conference in Pensacola, Florida.
- The Curator of Protozoa and Co-workers prepared eight presentations that were delivered at conferences in Canada, New Zealand, the USA and England.
- The estate of Charles Tanner, a well known herpetologist from Cooktown North Queensland, provided the resources to achieve an outstanding exhibition, 'Wildlife of Cape York Peninsula', which has been designed and implemented by a Museum display team, lead by Senior Curator Jeanette Covacevich, for the purpose-built Cooktown Interpretive Centre. The goal of the exhibition is to heighten awareness of the Cape's wildlife and, in so doing, improve its conservation.
- Maintenance and development of the Library's exchange program for the *Memoirs of the Queensland Museum* and the *Memoirs of the Queensland Museum Cultural Heritage Series* led to exchanges with over 460 Australian and international research institutions.
- The Library digitised abstracts for recent issues of the *Memoirs of the Queensland Museum* for the Queensland Museum website.
- Spiders continue to be an overwhelming focus for community interest and the Museum has contributed to public understanding through all TV Channels, radio interviews (4BC, 4KQ, 4QR, 4QG and networks), Australian Press at all levels, the British Broadcasting Corporation and on the Discovery Channel On-line as well as the Museum's web pages.
- Staff of the Palaeontology Section participated in segments on Totally Wild, Creek to Coast, ABC Radio, ABC Regional Radio, BBC International Radio and had articles published in regional, state and National press regarding fossils from Rockhampton, Darling Downs, 'Dave' the elasmosaur and the world's oldest fossil fern.
- Dr Patricia Mather AO, a retired Queensland Museum Senior Curator, now an Honorary Associate, continued her investigations on the little known protochordates in the class Ascidiacea (sea squirts). She completed part 4 of her monograph on the Australian Ascidiacea, some 350 manuscript pages, 155 composite figures, 189 scanning electron micrographs and 160 colour images). Reviews from overseas referees praised the work, which will be published in August 2001 in the *Memoirs of the Queensland Museum* (in which parts 1 to 3 have also been published).
- Dr Mather conducted a successful 5 day workshop sponsored by the Australian Institute of Marine Science, James Cook University, and the Museum of Tropical Queensland. The workshop was attended by professional scientists from those institutions, the New Zealand National Institute of Water and Atmospheric Research and the Western Australian Museum. It was held in the Museum of Tropical Queensland in September 2000.
- Honorary Research Fellow Dr Sue Turner attended the 15th Senckenberg Conference: 'Mid-Palaeozoic Bio- and Geodynamics: the North Gondwana-Laurussia Interaction' in May 2001, as a Titular Member of the Subcommittee for Devonian Stratigraphy and Australian participant in IGCP 421. She presented a poster on Givetian microvertebrate faunas in Laurussia and North Gondwana as well as contributed to discussions on the subdivision of Devonian Stages.
- Various curatorial sections contributed both live and static items for display at the 'Museum Menagerie Madness' exhibition.

OUTLOOK FOR 2000-2001

- Promote and increase current and new partnerships and collaborations with key institutions in research and information on the Queensland fauna.
- Host the Australian Mammal Society National Conference at the Queensland Museum in July 2001.
- Continue cooperation with a variety of organisations in providing scientific input to several Queensland Heritage Trails Network projects. Work with the Mount Isa City Council to develop an integrated tourist attraction in that city which includes the Museum of North Western Queensland, a campus of the Queensland Museum.
- Expand strategic research on pathogens of aquatic animals in collaboration with researchers from Queensland, elsewhere in Australia, USA, New Zealand and England.
- Publish research information in at least two issues of the *Memoirs of the Queensland Museum*.
- Develop scientific concepts for the 'Intimate Aliens' display on parasitology and complete for publication the 'History of Parasitology at the Queensland Museum', to be launched concurrently with the display.

CULTURAL HERITAGE PROGRAM

KEY ISSUES

- Identification of important historical themes warranting interpretation that would lead to research, publications, displays and other educational outcomes.

KEY RESULTS

- Provision of the authoritative base in cultural heritage topics for the Museum's public and professional programs.
- Major Centenary of Federation exhibition completed and well received.

FIELD WORK

- Dr Richard Robins, Senior Curator, Australian Archaeology continued field research projects in the Gulf of Carpentaria and southwest Queensland.
- Dr Judith McKay, Curator, Applied Arts, as national convenor of the Women in Museums group, organised and chaired the Women's Session of the Sixth Annual National Conference of Museums Australia in Canberra, April 2001.
- The Museum's Garrett steam traction engine made a number of excursions to restoration society field days and similar events, such as the Centenary of Federation celebrations at The Workshops, Ipswich, and continued to attract enthusiastic attention.
- Technician Peter Volk made a number of trips to local museums to train them in the operation of the QM Accessioning Resource Kit.
- Judith Wassell, Curator, Cross-Cultural Studies undertook fieldwork in southeast Queensland to follow-up on the consultative process established with members of the competitive swimming community
- Olivia Robinson, Senior Curator, Aboriginal Studies, attended a community meeting in Ipswich to discuss the possible repatriation of ancestral remains and undertook 8 days of community consultation as part of developing the Indigenous exhibition at the Cobb & Co. Museum in Toowoomba.

EXCELLENCE IN RESEARCH

- Dr Judith McKay, Curator, Applied Arts was invited to give a lecture on Australian gold exhibits at the National Museum of Australia, to accompany the National Museum exhibition 'Gold and Civilisation'.
- The Curator, Applied Arts was appointed an Honorary Research Adviser in the School of History, Philosophy, Religion and Classics, of the University of Queensland.
- The final report from the CSIRO coordinated collaborative project 'Assessment of Organic Pollutants emitted from wood panels used in museum display and storage cases' has been received. The Queensland Museum was one of six collaborators in this project, with the National Museum of Australia, the National Gallery of Australia, the Australian National Maritime Museum, Museum of Victoria and the Australian War Memorial.
- Michael Quinnell, Senior Curator, Oceanic Anthropology contributed a chapter on Sir William MacGregor and his ethnographic collection to a book about ethnographic collecting in the Pacific between 1870 and 1930.
- Dr Brian Crozier, Senior Curator, Social History's article 'Historical sensibility' was published in the Australian Historical Association Bulletin in December 2000.
- Social History Volunteer Faye Schutt and Technician Errol Beutel completed research on the book 'The indispensable goat', which is now in draft and awaiting editing. A documentary on the subject is being negotiated with Channel 7.
- Chris Lloyd, Assistant Curator, Social History completed research on the medals of Ian Pursey and volunteer Eliza Smith completed preliminary research on the career of Ron Jones, inventor of the rolling loop, a key component in the Imax projection system.
- Judith Wassell, Curator, Cross-Cultural Studies completed a research project on the history of competitive swimming in Queensland in preparation for an exhibition at the South Bank Campus.
- The Curator, Cross-Cultural Studies began a research project on Chinese migration to, and settlement in southeast Queensland in preparation for an exhibition at the Cobb & Co Museum, Toowoomba.
- Olivia Robinson, Senior Curator, Aboriginal Studies undertook research as part of the Indigenous exhibition at the Cobb & Co. Museum and Aboriginal Studies staff undertook research on Neville Bonner in preparation for a possible future exhibition.

- The Maritime Archaeology Section received funds from the Commonwealth's Historic Shipwrecks Program for investigation of sites associated with the Torres Straits' pearling industry, management planning for the *Yongala* historic shipwreck and a multi-media project (Underwater Display Case) featuring 15 prominent recreational diving sites.

COMMUNICATING INFORMATION

- Dr Richard Robins, Senior Curator, Australian Archaeology produced, with the Senior Curators Oceanic Anthropology and Aboriginal Studies, a major exhibition based on Indigenous Art in Artefacts, 'Objects as Art' that opened in September 2000.
- The Senior Curator, Australian Archaeology was involved in teaching first year archaeology to University of New England Diploma of Liberal Arts students.
- The Queensland Museum's major exhibition for the Centenary of Federation, 'Queensland 1901', opened in March 2001. It was curated by the Curator, Applied Arts, Dr Judith McKay and her assistants, Janet Campbell and Marianna Auliciems.
- The exhibition 'Queensland 1901' was accompanied by a series of 11 lunchtime talks, attended by approximately 1,800 people and it was also accompanied by a morning of 'Women's Talks' as the Queensland Museum's event for International Women's Day 2001.
- The Queensland Museum completed a consultancy for new displays at John Flynn Place, Cloncurry. These displays were opened in November 2000.
- Christine Ianna, Senior Conservator attended the combined International Institute for Conservation (IIC) and the Australian Institute for Conservation (AICCM) Conference in Melbourne to maintain currency in the field.
- Staff from Oceanic Anthropology together with Museum Services staff produced and staffed a display associated with the ceremony to acknowledge the Queensland Government's Official Recognition of the Australian South Sea Islander community at Parliament House on 7th September 2000.
- A successful partnership was established with Channel 7 with the production of a documentary based on Brian Crozier and Rod Fisher's book, *The Queensland house: a roof over our heads*, coinciding with its republication. As a result of the documentary, the book recovered its reprinting costs within a month of republication.
- The 'Recorders' series of presentations by Queensland movie historian Kev Franzi, begun in 1999-2000, was completed.
- Dr Brian Crozier, Senior Curator, Social History continued to teach the University of Queensland Graduate Diploma course 'Museology in Theory and Practice'. He also continued to supervise a PhD thesis for the University of Queensland and Technician Peter Volk again taught in the TAFE Certificate 4 course on 'Museum Administration'.
- The Senior Curator, Social History, volunteer Faye Schutt and Technician Errol Beutel completed the content for a web page, 'A moving experience: working with goats', for the Museum website.
- Volunteer Stephanie Rossiter completed a small display in the Inquiry Centre based on a Gordon Highlander kilt and associated items.
- The Social History Section's 'Images' exhibition closed in November after 14 years.
- The Senior Curator, Social History curated a small exhibition on F.C. Wills and his 1899 films of Queensland, based on the theatrette and including screening of the films on the hour.
- Judith Wassell, Curator, Cross-Cultural Studies completed the content for the Queensland Museum platform on the 'Chinese Connections' website, part of Brisbane City Council's 'Brisbane Stories' and also produced the content for a 'Queensland Stories' platform on the Queensland Museum website.
- The Curator, Cross-Cultural Studies was responsible for preparing the content kit for the 'In the Swim: Regulation, Liberation, Celebration' exhibition to open on the 10 August 2001 at Southbank Campus.
- The Curator, Cross-Cultural Studies, and the Assistant Curator, Marianna Auliciems, contributed to one community access exhibition (AUSTCARE), and two travelling exhibitions (Roses and Red Earth and Terra Nova) and the Assistant Curator also contributed to the 'Museum Menagerie Madness' exhibition.
- The Curator, Cross-Cultural Studies contributed content to the 'Queensland 1901' exhibition.
- The Assistant Curator and the Curator, Cross-Cultural Studies, with the assistance of designer, Jeremy Smedes produced an issue of *Timelines*, the Museums Australia Historians' Special Interest Group Newsletter.

- 60 visitors to 'Objects as Art' were surveyed as part of the evaluation process resulting in valuable information being collaborated for the development of future Indigenous exhibitions.
- The Indigenous exhibition 'Old Man Fog: Paintings by Tulo Gordon' displayed at the Queensland Museum Southbank Campus from July 1999 to July 2000, toured throughout Queensland as a travelling exhibition.
- Aboriginal Studies collections were contributed to the following exhibitions displayed at the Queensland Museum Southbank Campus, 'Queensland 1901' and 'Museum Menagerie Madness'.
- Olivia Robinson, Senior Curator, Aboriginal Studies, provided assistance in an advisory and resource capacity, to curators of the Cooktown Interpretation Centre and the Commissariat Store.
- Aboriginal Studies staff provided assistance to the MAQ/RGAQ in hosting the Lunchtime Forum 'Big Noting' held in the Queensland Museum in July 2001, attended by approximately 50 people.
- Aboriginal Studies and Oceanic Anthropology staff made presentations and displays at NAIDOC Week Family Fun Day at Musgrave Park in July 2000.
- The Senior Curator, Aboriginal Studies, presented at the Indigenous workshop 'A Keeping Place or Other Options for Preservation and Protection of our Cultural Heritage' hosted by the Cobb & Co. Museum, and was featured in an article on the Indigenous workshop appearing in the *Toowoomba Chronicle* newspaper. She was also featured in a *Courier Mail* article with Dr Robert Anderson, Chairperson QMATSIACC, to promote the section's activities.
- The revised edition of Senior Curator, Maritime Archaeology, Peter Gesner's *Pandora: An Archaeological Perspective* was launched in September 2000.

4. CARING FOR COLLECTIONS

Under the Queensland Museum Act, 1970, the Board is responsible for the control and management of the natural and cultural heritage collections in its care. In undertaking this central role, the Queensland Museum acknowledges its duty of care and recognizes that the issue of access is directly related to caring for the collections. The Museum also recognizes its responsibility to provide support to other museums and to historical societies to care for the distributed collections of Queensland.

GOAL

To account for, preserve, safeguard and provide access to the collections and associated information in the care of the Museum, balancing long term preservation with use and available resources.

NATURAL ENVIRONMENT PROGRAM

KEY ISSUES

- Quality of the State Natural History Collection.
- Development of collections to represent all faunas and all areas of the State.
- Storage space for several natural history collections is now completely used up and the need for offsite storage to relieve this situation is acute.
- Provision of quality library services to facilitate research.
- Promotion of the authority, relevance and significance of the State Collection remains a necessity.
- Increased accuracy in, and access to, the collection databases.

KEY RESULTS

- Acknowledgement by users of well-curated, comprehensive State Natural History Collection and quality research library collection and services.
- Secured a budget line within the Millennium Arts 2000 Project for an off-site storage facility, identified a suitable property (within budget for purchase, refurbishment and transfer of collections), completed plans for its use and at year's end had an offer to purchase before the vendor.
- Completed auditing of the collection of the Earth Sciences Branch at University of Queensland.
- Continued acquisition and cataloguing of the Colliver library into the Museum library.

EXISTING COLLECTIONS

- Collection databases continued to be updated with addition of latitude and longitude data for some early collections and major additions in the protozoan, worm, reptile and geological areas.
- The Sydney University School of Tropical Medicine Parasite Collections donated to the Queensland Museum two years ago were rebottled, relabeled and registered into the Museum collection.
- 2,254 frogs and reptiles have been accessioned, identified and added to the research collections.
- Major re-ordering of sessile marine invertebrate collections (marine sponges and ascidians) was undertaken to audit collections, assess loans in, and improve the efficiency of storage space.
- 1,379 butterflies from Cape York Peninsula and 839 specimens of Eulophidae were registered and databased by Chris Sharp during a 5 month Work for the Dole placement.
- 10,125 insects were databased, mostly from Central Queensland rainforest collecting.
- Removal of air-conditioning units and water pipes from above the Library collection area has reduced the threat of collection damage. This work on the air-conditioning system should also alleviate a long standing mould problem.
- Databasing of the land snail collections continued with the addition of a considerable amount of incoming material. Dr John Stanisic, Curator of Molluscs, continued to provide identification assistance to the Australian Museum land snail database project where the Queensland component is now fully identified but not yet electronically captured.

- The University of Queensland Earth Sciences Museum collections continued to be audited, sorted and reorganised into the QM collections with assistance from the Commonwealth Government Work for the Dole scheme. Over 100,000 items were processed.

ENRICHING COLLECTIONS

- 231 samples of insects from 96 localities were collected during fieldwork and a total of 6,720 specimens added to the entomology collections – sample sites included rainforests and vine scrubs between Rockhampton and Sarina, the Granite Belt, the Mt Isa area, northeastern New South Wales and New Caledonia.
- A contract to supply insect samples to AstraZeneca R&D Griffith University for bioprospecting was continued. Most of our fieldwork for the year has been funded by this contract enabling supply of 300 bioprospecting samples, as well as accumulation of considerable collections of direct relevance to the Museum.
- Under Rainforest CRC funding long-term insect trapping was undertaken at 27 new rainforest and vine scrub sites in Central Queensland. These habitats have never been methodically surveyed in the past and have yielded many new species and range extensions. A major discovery was of a new subfamily of shield bugs at Mazeppa National Park.
- The database of dung beetle records for Queensland now exceeds 50,000 specimens and is a valuable tool for environmental surveys. During the year many sites were sampled in the Brisbane metropolitan area showing a significant retention of the native dung beetle fauna in relict vegetation patches.
- The Rockhampton City Council donated a whaling cannon, whaling harpoons and tri pot which add to the historical whaling collections acquired from Tangalooma Whaling Station.
- A major marine biological expedition was undertaken to the remote and relatively poorly known (faunistically) Outer Swain Reefs, southern Great Barrier Reef (GBR), in collaboration with the University of Queensland's Department of Microbiology and Parasitology and Oregon State University, USA. Other marine biological surveys were undertaken inside and outside of Moreton Bay, based at the new University of Queensland's Research Station at Dunwich; survey of intertidal and subtidal sessile marine invertebrates from the Bundaberg region, central Queensland, the Sunshine Coast and Fraser Island regions, southern Queensland; recollections from Lizard Island, Far Northern Sector, GBR; and the Palm Isles, Central Sector, GBR.
- Under AstraZeneca R&D Griffith University (AzGu) funding 1,000 marine invertebrate samples (approx. 600 species) were collected, identified, accessioned into the collections and screened for pharmaceutical properties. Over the 8 year project these collections have grown to more than 3,000 species of sponges and many hundreds of other species of sessile marine invertebrates, with most of the sponges found to be new to science.
- Important additions to the herpetological collections include: the largest Taipan (*Oxyuranus scutellatus*) known; the first known juvenile specimen of the poorly known, narrowly-distributed skink (*Eugongylus rufescens*); a fully articulated 4m skeleton of an Amethyst Python (*Morelia kinghorni*); large collections of frogs made by K.R.H. McDonald of Queensland Environmental Protection Agency; frogs and reptiles from regular donors from northeastern and western Queensland (L. & C. Roberts, A. Emmott).
- The protozoan collection of avian haematozoa increased significantly with specimens from SE Queensland derived from the Curator's collaborative research program with the National Trust's Currumbin Fauna Sanctuary wildlife hospital.
- A significant number of rainforest and dryland scrub fossil faunas found in cave earths in Mt Etna Caves were accessioned into the collections with the logistical support of Pacific Lime.
- Fossil turtles from the Rundle Oil Shale deposits were added to the collection as part of work undertaken with QUT and Southern Pacific Petroleum.
- More skeletal elements of Australia's most complete elasmosaur 'Dave' were excavated from Cape York, with the generous assistance of the Mareeba and district community, particularly Braes Apel Solicitors and Tolga State School.
- A new, rare Iron IIIIF meteorite was added to the collection, it is one of only 8 of its type known in the world.
- The Library grew by over 1,100 books including a further 763 from the F.S.Coliver bequest as well as more than 450 serial volumes.
- Where available, access to electronic editions of serials is being linked through the Library catalogue.

ENCOURAGE AND FACILITATE ACCESS TO THE COLLECTIONS

- The mammal and bird collections were used throughout the year by international researchers, Australian scientists, teachers, students, artists, clubs and societies, writers, television crews, environmental consultants and interested members of the public. Demand for database and technical services was constant, and the Technicians, Vertebrates Zoology, processed requests generating around \$10,000 income.
- Collections of sessile marine invertebrates continued to attract attention of international biological and chemical researchers, especially for their potential as sources of pharmaceuticals, with access provided to over 20 institutions nationally and worldwide.
- Post-graduate student supervision, undergraduate teaching and other lectures were provided by Drs J.N.A. Hooper and G. Woerheide to: Department of Zoology and Entomology (ZEN), The University of Queensland; Research School Faculty of Science, Northern Territory University; Queensland University of Technology; Centre for Marine Studies, The University of Queensland; Senckenberg Museum, Frankfurt and University of Goettingen, Geoscience Centre, Department of Geobiology, Goettingen, Germany; and Universitas Udayana, Bali, Indonesia. Notably, Dr Woerheide's Honours student, Danielle Luibich (UQ ZEN), successfully completed her Honours degree and also won the student prize for best oral presentation at the national Australian Marine Sciences Association conference.
- Fish collections were accessed for taxonomic studies by researchers from Australia, Germany and Japan. Database searches and specimen identifications were undertaken as consultancies for environmental consultants, EPA and DPI, Australian Quarantine Inspection Service and some community-based environment groups.
- QM records and other information were provided for a major project on Australian endangered marine fishes, coordinated by the Australian Museum.
- Dr Mike Kent (Director, Fish Disease Research Laboratory, Oregon State University, USA) visited the Museum in February with PhD student Chris Whipps to collaborate with the Curator of Protozoa on characterising emerging fish pathogens.
- Dr Mike Peirce (MP International Consultancy, England) visited in March to undertake collaborative research with the Curator of Protozoa to determine the prevalence, intensity and identity of avian haematozoa in SE Queensland, funded by an ABRIS research grant.
- 145 researchers accessed the frog and reptile collections directly; a further 215 loans were made to interstate and overseas researchers and 5 groups, including 24 Beaverton (Oregon, USA) lecturers and teachers, have been welcomed 'behind the scenes' in the herpetology section.
- Several sections contributed specimens, advice and preparation time to assisting the Queensland Ambulance Service to improve its teaching collection of potentially dangerous creatures. Patrick Couper, Curator, Vertebrate Zoology, led the project. To record its appreciation, Queensland Ambulance Service presented a plaque to the Director and certificates to all who contributed.
- Jeanette Covacevich, Senior Curator, Vertebrate Zoology, contributed data to, and acted as a reviewer of, the recently-published, Oxford University Press textbook, 'Australian Animal Toxins. The creatures, their toxins and care of the poisoned patient'. The authors, Professor Struan Sutherland and Jim Tibballs acknowledged this assistance generously.
- Dr Mike Hodda (Australian National Insect Collection, Canberra, curator of the plant parasitic and free-living nematode collections) spent several days pursuing research goals with the nematode collections.
- Collections of fossil gastropods were visited by Dr Jiri Fryda of the National Museum, Prague, Dr Alex Nutzelt of the University of Erlangen, Dr Peter Wagner, Field Museum, Chicago, as part of a wider project on the global relationships of the group.
- Vertebrate fossil material in the collections was the focus for a Masters student and a PhD student from QUT.
- The Library's document delivery service supplied 285 loans/copies to external clients.

OUTLOOK FOR 2000-2001

- Maintain curatorial standards and reorganise collections into the new off-site storage facility to ease space problems and ensure safe storage and accessibility of the State collections.
- Complete accessioning into the Museum Library of the several thousand books donated through the Colliver bequest.
- Increase the value and scope of collections through the selective acquisition of collections and collection items in areas of strategic priority throughout the State and adjacent territories.

CULTURAL HERITAGE PROGRAM

KEY ISSUES

- Analysis of existing collections to determine where effort should be directed to ensure comprehensive coverage of important issues.
- Need to ensure existing and developing collections in Government departments are included in material considered for incorporation in the State Collection, identifying that adequate resources are also provided.
- Provision of sufficient, environmentally controlled storage and appropriate conservation treatment to ensure collections are stabilised, and provision of research facilities to ensure maximum access to the collections by specialists and the general public.
- Continuation, in a culturally appropriate time frame, of repatriation of human remains and other sensitive items of concern to the Aboriginal and Torres Strait Islander communities.
- Development of information technology systems to optimise public access to data and images of collections.

KEY RESULTS

- Acknowledgment by users of a well curated, comprehensive State Cultural Heritage Collection.
- Negotiation of a Commonwealth Grant, for a program of community negotiations to be implemented in 2001-2, that will assist in resolution of concerns over sensitive indigenous material in the Museum collection.

ENRICHING COLLECTIONS

- Collections continued to develop in keeping with approved policies.
- 4,916 items accessioned as the Australian Archaeology Section continued registration of the backlog of Ethnology and Queensland Ethnology collections and continued the compilation of the Site Register, with five collections added.
- 395 artifacts and ethnohistoric photographs from the Torres Strait Islander community and 85 items and ethnohistoric photographs from the Australian South Sea Islander community.
- Clothing and accessories from the Chinese, Hmong, Japanese, Latvian and Russian communities and woven rugs from the Greek Community.
- A 1984 *Warana* float from the Sicilian community.
- An abacus used by a Brisbane Chinese family in 1901.
- An illuminated address presented to the Police Magistrate of Cairns by the Cairns Chinese community in 1896 and a Chinese Temple carving believed to have been used in north Queensland.
- 60 items forming part of the archives for the Council for Aboriginal Reconciliation (Qld).
- A breastplate from the Qld/NSW border donated to the Aboriginal Studies collection.
- A number of rare and significant pieces were obtained by the Museum from the sale of the Christison 'Baddow House' collection, including a Brennan and Geraghty stoneware jam jar (extremely rare); a Castelmaine stoneware beer mug (very rare); a Clarke-Hemmant dripping jar; a Blake-Laidley milk jug; and a stoneware butter churn with original agitator.

OTHER COLLECTION-RELATED ACTIVITIES AND OUTCOMES

- Conservation surveyed, reported and packed over 600 items from the Maritime Archaeology collection for transport to the Museum of Tropical Queensland, Townsville as part of that section's relocation.
- Among the 129 visitors to the Torres Strait Islander and Australian South Sea Islander kastom collections were University and TAFE student groups in addition to Torres Strait Islanders and Australian South Sea Islanders.
- An unusual partnership with Australian astronaut Andy Thomas resulted in a watch once owned by Charles Kingsford Smith being taken into space on board the US space shuttle *Discovery*. Considerable media coverage was generated by the event.
- Social History Technician, Peter Volk, continued to manage the Accessioning Kit program, which has so far placed around 70 sets of the Queensland Museum Accessioning Resource Kit in museums around Queensland, interstate and overseas. The program is self-supporting with respect to its operating and development costs.

- Dr Brian Crozier, Senior Curator, Social History convened a working group which developed a policy for the Museum on intellectual property, now adopted by the Board. The working group has also been developing a web-based database to market a selection of QM photographs, and will continue to meet, devising strategies for the implementation of the policy.
- The Senior Curator, Social History deputised for the Science Centre Director for a month during his absence overseas and the Curator, Cross Cultural Heritage deputised for the Director Cultural Heritage for 6 weeks.
- 2,182 Social History items have now been digitally imaged.
- Technological items stored at West End have been reviewed to identify those which are incomplete, have no provenance or are duplicates, for possible deaccessioning.
- Restoration of the Marshall steam roller by Metal Shop Manager Monty Schofield was initiated in January and by June was nearly complete, promising a magnificent addition to the Museum's steam collection. The project has been funded by income from fees charged for access to the Museum's 1899 Lumiere films.
- Judith Wassell, Curator, Cross Cultural Studies, and the Assistant Curator, Marianna Auliciems, provided an ongoing museological training program for five university graduates and undergraduates who volunteered their time to the Museum.
- The Assistant Curator, Cross-Cultural Studies completed the processing of the Queensland women in sport history collection and processed loaned and donated objects, documents and photographs, for 'In the Swim' exhibition for the South Bank campus.
- The Assistant Curator, Cross-Cultural Studies completed the documentation and storage of the African collection returned from long-term loan to the James Cook University of North Queensland.
- The Curator, Cross-Cultural Studies, and the Assistant Curator, Louise Jorgensen, with the assistance of the Section's Honorary Technical Assistants, began the documentation of the Kwong Sang and Co collection.
- Olivia Robinson, Senior Curator, Aboriginal Studies, developed an extensive 2-year plan for the repatriation of Aboriginal ancestral remains and secret sacred objects, as part of the Queensland Museum's submission for funding under the RICP program. Confirmation of grant approval was received in April 2001.
- The Senior Curator, Aboriginal Studies, represented the Queensland Museum at a seminar organised by the EPA on the repatriation of ancestral remains coming from overseas collections.
- The Physical Anthropology database containing information about ancestral remains and associated burial objects, was transferred from ClarisWorks to Microsoft Access enabling increased accessibility and Aboriginal Studies staff have worked to increase accessibility to the collection through accessioning, loans and database development.
- A visiting museum intern from Canada worked on the Glenn Cook collection of 1,000 items for 15 weeks from September to December 2000 establishing accessioning, cleaning and photography procedures for the collection.
- The Maritime Archaeology Section transported 4,077 artefacts from Brisbane Museum to MTQ; 1,543 artefacts have been processed and located on shelving and 2,534 artefacts await processing.

MATERIALS CONSERVATION

- Condition reporting was carried out on all travelling exhibitions to and from the Museum. These included objects in 'Body Art', 'Old Man Fog: Paintings by Tulo Gordon', 'Women of the West', 'Living Colour', 'Refined White', 'Everyone's Business', 'Ilan Pasin' and objects for John Flynn Place, Cloncurry.
- Conservation input, condition reporting and some remedial treatment was also carried out on objects for Community Access exhibition including 'Terra Nova' and 'Roses and Red Earth'.
- Conservation provided remedial conservation and display input required for the newly commissioned Indigenous exhibition at the Southbank Campus.
- Loan objects from the Museum to other venues were condition reported and packed for transport. These included objects from the South-sea Islander collection for loan to the Australian Sugar Industry Museum as part of a travelling exhibition funded by Visions Australia. Others included children's toys from Social History for Global Arts Link and a pituri bag and a wallaby skin water bag treated, reported and packed for an exhibition at the National Museum of Australia. Objects were also condition reported and packed for access by aboriginal communities including loans to the Cherbourg library and the Eumundi Museum.

- Conservation provided input to a number of bodies undertaking or approving archaeological excavations including the EPA and the Brisbane City Council and Archaeo Cultural Services Ltd regarding the conservation implications and costs associated with excavating, stabilising and curating objects that are required to be lodged with the Queensland Museum by legislation.
- The new Tropical Conservation Section at Museum of Tropical Queensland completed treatment on 350 artefacts and commenced or maintained conservation treatment on another 1,023.

OUTLOOK FOR 2001-2002

- Purchase of a new off site collection work space will necessitate major work to relocate the cultural heritage collections held at the rented West End store.

5. INFORMATION MANAGEMENT AND INFORMATION TECHNOLOGY

The Queensland Museum's position in the knowledge industries depends on its ability to maintain and provide access to the vast storehouse of information in the various Museum databases and collections. The Museum will be a communicator of authoritative knowledge to local, national and global audiences through the innovative use of new technology in the presentation of its programs and the management of its collections and knowledge bases.

GOAL

To enhance the Museum's capabilities and regional service delivery through the creation of a digital environment that will facilitate rapid access to the Museum's knowledge and collection data bases and position the Museum as an authoritative information provider to a global audience.

KEY ISSUES

- Development of strategic partnerships.
- Establishment of an improved web presence.
- Maintenance of an effective and efficient IT help desk service.
- Need for an integrated collection database.
- Development of an information and technology strategic plan.
- Security of the Museum's databases and systems.

KEY RESULTS

- The Museum's computer network functioned with minimal down-time.
- Virus attacks continued, but security measures worked to intercepted them before significant damages could occur.
- A new Windows 2000 file and print server was brought into the network to alleviate disk and backup storage space problems.
- Website hosting has been brought in-house and is now maintained at the Museum.
- Queensland Museum's new website was constructed and implemented, with the site moved to Microsoft Active Server Page format – this required extensive programming work, but provided important advantages in ongoing maintainability and updatability. New page download size is much smaller resulting in faster response and better usability.
- The Museum's award-winning web site 'Museum Explorer' was accessed by approximately 6,148,846 hits, including 1,203,734 individual page views.
- The website usage reflects a large amount of database driven presentation – for example the 'Events Calendar' is now the most popular page with more than 6,000 downloads each month.
- As part of the Strategic Planning Process, the Data Development Section participated in production and implementation of the *Information and Technology Strategic Plan*.

6. MARKETING

Through effective brand management, advertising and public relations, the Queensland Museum will be positioned as a provider of unique educational experiences that entertain and inform. Market research and audience evaluation will ensure that Museum products and services meet the needs and wants of its visitors.

The establishment and nurturing of strategic partnerships will continue to be at the heart of the Museum's marketing strategies to increase public awareness and reinforce the values of the Queensland Museum.

GOAL

To position the Queensland Museum as a provider of enjoyable, stimulating educational experiences and as the Queensland Government authority on cultural and natural heritage.

KEY ISSUES

- Identifying and responding to customer needs.
- Facilitating the coordination of marketing programs through all Museum campuses.
- Ongoing efforts to increase public awareness of the extent of services.
- Growth in demand for services exceeding growth in funding.
- Increasing competition for leisure time activities.
- Need to continuously increase extent of revenue generated from non-Governmental sources.
- Making most of recognised expertise of professional and technical staff to enhance institutional image.
- Developing an environment to encourage a greater multicultural involvement.

KEY RESULTS

- A Corporate Museum-wide *Strategic Marketing Plan* developed, implemented and reviewed annually.
- Museum-wide branding strategy developed, implemented.
- Annual market research and audience evaluation program in place.

HIGHLIGHTS 2000-2001

- Initial design and development of Corporate Marketing Museum-wide Marketing Strategy.
- The continuing strong relationships formed with all media outlets enabled good coverage of the Museum's activities and events to be disseminated to the public.
- The Queensland Museum's Public Relations promoted goodwill among the public, presenting a favorable image of the Museum.

OUTLOOK FOR 2000-2001

- Implement the Corporate Museum-wide Strategic Marketing Plan.
- Undertake a Marketing audit.
- Maintain and further develop the comprehensive promotional planning, target marketing and fundraising database to gain more efficiency and effectiveness.
- Continue to support all the Queensland Museum campuses from a marketing and development perspective.

7. RESOURCES

The Queensland Museum's current and future operations are critically dependent on the availability and allocation of resources. The challenges in this area include sustained effort to increase the absolute quantity of resources available whilst achieving optimum allocation to eliminate waste, maximise efficiency and provide the best fit with prioritised objectives.

GOAL

To increase and optimise the resources available to the Queensland Museum.

KEY ISSUES

- Retention of a staff pool of talented, creative, diverse individuals.
- Development of new funding sources.
- Adoption of a business planning approach for all Museum activities.
- Optimising earned revenue.

KEY RESULTS

- Development of a Board Sub-committee to oversee the establishment of a Museum Foundation and the secondment of a senior officer from the Department of Premier and Cabinet to assist with the development of the Foundation.

HIGHLIGHTS 2000-2001

- Successfully negotiated renewed leasing terms for the Museum Cafeteria to ensure continuity of operation and client service.
- Successfully attracted funding from non-traditional granting sources such as the Commonwealth Regional Assistance Program funding for the *Think Link* project at Cobb & Co Museum, Toowoomba. This is a partnership between the Cobb & Co Museum & Golden West Regional Tourist Association, Toowoomba City Council and tourism operators in Toowoomba and the Darling Downs. The project is targeted at connecting and developing high yield tourism opportunities in the region.
- Maintained a vigorous publication program with the release of the very popular *Wildlife of Tropical North Queensland* and publication of further editions of *The Queensland House* and *Pandora: an archaeological perspective*.

8. MANAGEMENT

The commitment of Government, Board and staff to the achievement of a common vision is critical to the long-term performance of the Queensland Museum. Leadership at all levels will be required for this to occur. The empowerment of staff, their financial accountability and motivation to excel in their appointed field are key priorities for Museum management.

GOAL

To create an empowering environment in which the long-term direction of the Museum is clearly communicated and appropriate resources are allocated to achieve the identified strategic priorities.

KEY ISSUES

- Development and implementation of a shared vision for the future.
- Investigation of capital development opportunities.
- Empowerment of staff and the importance of teamwork and project management.
- Establishment and maintenance of strategic partnerships.
- Establishment of ethical standards that underpin the day to day operation of the Museum.
- Management of change.
- Development of corporate capabilities in key areas.
- Performance management.
- Management of Board business and the role of the campus management committees.

KEY RESULTS

- A new Strategic Plan was collaboratively developed by staff and key stakeholders and approved by the Board and Government.
- A new Code of Conduct was developed involving staff and unions.

HIGHLIGHTS 2000-2001

- The Museum made a significant contribution to the Landmark Task Force and the development of a final report to Government.
- The Museum provided an important input into the development of the Workshops, Railway Museum in Ipswich.
- A series of project management courses have been conducted involving teams involved in exhibition development.
- The Director, Sciencentre, was accepted into the prestigious Getty Leadership Institute.
- A Board Secretary was appointed to improve management of Board business.
- Strong linkages have been forged with the University of Queensland, Griffith University and Queensland University of Technology through honorary appointments, Board memberships, formal agreements and joint projects. Other formal alliances have been pursued with the Great Barrier Reef Research Foundation, Tropical Marine Network and a number of overseas institutions including a consortia of German Universities. The Museum continues to maintain strong ties with the Smithsonian Institute through a formal agreement developed by the Queensland Government.
- A staff induction manual was completed and two new Human Resources policies were approved by the Board.

OUTLOOK FOR 2001-2002

- Operational Plans that seek to achieve the goals outlined in the Museum's Strategic Plan will be developed for all programs and venues.
- The Museum of Tropical Queensland has just completed its first year of operation since opening the new building in Townsville last year. This is therefore an appropriate time to review the operations of the museum in the light of the Queensland Museum's strategic goals and available resources.
- A review of the organisational structure of the Queensland Museum will be undertaken in relation to the Museum's proposed future strategies and vision.

- The Workshops, Railway Museum in Ipswich will become part of the Queensland Museum's network. The Queensland Museum will take over operational responsibilities early in the next financial year.
- Purchase and development of a new off-site collection store is anticipated as part of the Government's Millenium Arts Program.
- The opening of a significantly expanded Cobb and Co Museum, Toowoomba, is anticipated in October, 2001.

APPENDIX 1

PUBLICATIONS

- ADAMS, C.L. & HOOPER, J.N.A. 2001. A revision of Australian *Erylus* (Porifera: Demospongiae: Astrophorida: Geodiidae) with a tabular review of worldwide species. *Invertebrate Taxonomy* 15(3): 319-340.
- ADLARD, R.D. 2000. *Bonamia* spp, disease of flat oysters. Pp. 24-27. In Heasman & Lyall (eds), Problems of producing and marketing the flat oyster *Ostrea angasi* in NSW. Fisheries Research Report Series: 6. (NSW Fisheries Research Institute: Cronulla, Australia).
- AMEY, A.P. & WHITTIER, J.M. 2000. The annual reproductive cycle & sperm storage in the Bearded Dragon, *Pagona barbata*. *Australian Journal of Zoology* 48: 411-419.
- BAEHR, B. & JOCQUÉ, R. 2000. Revisions of genera in the *Asteron*-complex (Araneae: Zodariidae). The new genera *Cavasteron* and *Minasteron*. *Records of the Western Australian Museum* 20: 1-30.
- BAEHR, B. & JOCQUÉ, R. 2001. Revisions of genera in the *Asteron*-complex (Araneae: Zodariidae): new genera *Pentasteron*, *Phenasteron*, *Leptasteron* and *Subasteron*. *Memoirs of the Queensland Museum* 46(2): 359-385.
- BARTSCH, I. 2000. Rhombognathinae (Acari: Halacaridae) from the Great Barrier Reef, Australia. *Memoirs of the Queensland Museum* 45: 165-203.
- BLIECK, A., TURNER, S., YOUNG, G.C., LUKSEVICS, E., MARK-KURIK, E., TALIMAA, V.N. & VALIUKEVICIUS, J.J. 2000. Devonian vertebrate biochronology and global marine/non-marine correlation. In Bultynck, P. (ed.) Subcommission on Devonian stratigraphy - fossil groups important for boundary definition. *Courier Forschungsinstitut Senckenberg* 220: 161-193.
- BLIECK, A. & TURNER, S. (eds) 2000. Palaeozoic vertebrate biochronology and global marine/non-marine correlation. Final Report of IGCP 328 (1991-1996), *Courier Forschungsinstitut Senckenberg* 223: 575pp.
- BLIECK, A., TURNER, S. & KONIGSHOF, P. 2000. Forward. In Blicck, A. & Turner, S. (eds) Final Report of IGCP 328 (1991-1996), *Courier Forschungsinstitut Senckenberg* 223: i.
- BLIECK, A. & TURNER, S. 2000: Palaeozoic microvertebrates final scientific report — Introduction, incl. list of referees and IGCP 328 final publication list 1991-1997. In Blicck, A. & Turner, S. (eds) Final Report of IGCP 328 (1991-1996), *Courier Forschungsinstitut Senckenberg* 223: 1-67.
- BRUCE, A.J. 2000. Biological observations on the commensal shrimp, *Paranchistus armatus* (H. Milne Edwards), (Crustacea: Decapoda: Pontoniinae). *The Beagle, Records of the Museums and Art Galleries of the Northern Territory* 16: 91-96.
- BRUCE, A.J. 2000. *Onycoaridella prima* Bruce, 1981. A rare pontoniine shrimp from Darwin Harbour (Crustacea: Decapoda: Pontoniinae). *The Beagle, Records of the Museums and Art Galleries of the Northern Territory* 16: 89-90.
- BRUCE, A.J. 2000. The re-discovery of *Leandrites stenopus* Holthuis, 1950, a rare palaemonid shrimp, from Lucinda, Queensland. *The Beagle, Records of the Museums and Art Galleries of the Northern Territory* 16: 83-88.
- BRUCE, A.J. 2000. *Typton manningi* and *T. capricorniae*, new species, new pontoniine shrimps from northern Queensland, with a review of the Indo-West Pacific species of the genus *Typton* Costa (Decapoda: Palaemonidae). *Journal of Crustacean Biology* 20, special number 2: 87-100.
- BURROW, C.J. & TURNER, S. 2000. Silurian vertebrates from Australia. In Blicck, A. & Turner, S. (eds) Final Report of IGCP 328 (1991-1996), *Courier Forschungsinstitut Senckenberg* 223: 169-174.
- BURROW, C.J., TURNER, S. & WANG, S-T. 2000. Devonian microvertebrates from Longmenshan, Sichuan, China: taxonomic assessment. In Blicck, A. & Turner, S. (eds) Final Report of IGCP 328(1991-1996), *Courier Forschungsinstitut Senckenberg* 223: 391-451.
- BURWELL, C.J. 2001. A fetish for fungi. Australasian *Astichus* wasps (Chalcidoidea: Eulophidae). *News Bulletin of the Entomological Society of Queensland* 28: 161-165.
- CABIOCH, G., WALLACE, C.C., AYLIFFE, L.K., McCULLOCH, M.T., ZIBROWIUS, H., LABOUTE, P. & DE FORGES, B.R. 2000. First records of a fossil coral platform surrounding the Marquesas Islands. P. 298. In Hopley, D., Hopley, P.M., Tamelander, J. & Done, T. (eds) Proceedings of the Ninth International Coral Reef Symposium. (State Ministry for the Environment, Indonesia, Indonesian Institute of Sciences, and The International Society for Reef Studies: Bali, Indonesia).
- CANNON, L.R.G. & JOFFE, B.I. 2001. Temnocephalida. Pp.83-91. In Littlewood, T. & Bray, R. (eds), *Interrelationships of the Platyhelminthes*. (Taylor & Francis: London).
- CANNON L. R. G. & SEWELL K. B. 2001. Observations on *Dactylocephala madagascariensis* (Vayssière, 1892), a temnocephalan with twelve tentacles from Madagascar. *Zoosystema* 23(1): 11-17.
- CANNON, L.R.G. & SEWELL, K. B. 2001. A review of *Temnosewellia* (Platyhelminthes) ectosymbionts of *Cherax* (Crustacea: Parastacidae) in Australia. *Memoirs of the Queensland Museum* 46(2): 385-399.

- CHEN, C.A., WALLACE, C.C., YU, JR-K. & WEI, N.V. 2000. Strategies for amplification by polymerase chain reaction of the complete sequence of the gene encoding nuclear large subunit ribosomal RNA in corals. *Marine Biotechnology* 2: 558-570.
- CHEN, C.A. & WALLACE, C.C. 2000 Evidence for higher rates of Cytochrome b evolution in the Scleractinian coral genus *Acropora* in the family Acroporidae. P. 18. In Hopley, D., Hopley, P.M., Tamelander, J. & Done, T. (eds) Proceedings of the Ninth International Coral Reef Symposium. (State Ministry for the Environment, Indonesia, Indonesian Institute of Sciences, and The International Society for Reef Studies: Bali, Indonesia).
- CHISHOLM, L., WHITTINGTON, I.D., MORGAN, J.A.T. & ADLARD, R.D. 2001. Systematics within the Family Monocotyliidae (Platyhelminthes: Monogenea) inferred from morphological and molecular data. *Systematic Parasitology* 49: 81-87.
- COOK, A.G. 2000. Palaeobiogeography of Australian Devonian Gastropods. *Historical Biology* 15: 77-82.
- COOK, A.G. & CAMILLERI, N. 2001. Additions to the rostroconch fauna of Australia and China. *Memoirs of the Queensland Museum* 46(2): 401-407.
- COVACEVICH, J. 2000 Respite for a reef: a Norfolk Island success story. *Wildlife Australia* 37(3): 40-41.
- COVACEVICH, J. & COUPER, P.J. 2000. Reptiles of the outback. Pp. 69. In Schluter, L. (ed.) *Outback Interpretation Manual*. (Tourism Queensland, Industry Planning Department: Brisbane).
- COVACEVICH, J.A., BUFFET, A., COUPER, P.J. & AMEY, A.P. 2001. Herpetological foreigners on Norfolk Island, an external territory of Australia. *Memoirs of the Queensland Museum* 46(2): 408.
- CROZIER, B. 2000. Historical sensibility. *Australian Historical Association Bulletin* 91: 9-26.
- CROZIER, B. 2001. Material culture. *Museum National* 9(3): 30.
- CZECHURA, G.V. 2000. Lost Treasures. *Living Planet* 1(1): 59-63.
- CZECHURA, G.V. 2000. Scratching and Rustlings. *Wildlife Australia* 37(3): 28-29.
- CZECHURA, G.V. 2000. Scratching and Rustlings. *Wildlife Australia* 37(4): 30.
- CZECHURA, G.V. 2001. Scratching and Rustlings. *Wildlife Australia* 38(1): 30.
- CZECHURA, G.V. 2001. Scratchings and Rustlings. *Wildlife Australia* 38(2): 30.
- CZECHURA, G.V. 2001. The status and distribution of the Red Goshawk *Erythrotriorchis radiatus* on Cape York Peninsula, Queensland. Unpubl. report to Birds Australia, North Queensland Group.
- CZECHURA, G.V. & HOBSON, R.G. 2000. The Red Goshawk *Erythrotriorchis radiatus* in northern Queensland: status and distribution. Unpubl. report to Queensland Parks and Wildlife Service.
- CZECHURA, G.V. & OLSEN, P. 2001. An investigation on the presence, distribution and habitat conservation requirements for selected diurnal raptor species in the Brisbane area: Stage 1, Species accounts and site assessment. Unpubl. report to Environment and Parks Branch, Brisbane City Council.
- DALL, W. 2001. Australian species of Aristeidae and Benthescymidae (Penaeoidea: Decapoda). *Memoirs of the Queensland Museum* 46(2): 409- 441.
- DAVIE, P.J.F. & SHORT, J.W. 2001. Decapod Crustacea of North East Cay, Herald Cays, Coral Sea. Pp. 75-86. In Herald Cays Scientific Study Report, Geography Monograph Series No. 6. (The Royal Geographical Society of Queensland Inc.: Brisbane).
- DAVIES, V.T. & LAMBKIN, C. 2000. *Wabua*, a new spider genus (Araneae: Amaurobioidea: Kababinae) from north Queensland, Australia. *Memoirs of the Queensland Museum* 46(1): 129-147.
- DAVIES, V.E. & LAMBKIN, C. 2001. A revision of *Procambidgea* Forster & Wilton, (Araneae: Amaurobioidea: Stiphidiidae). *Memoirs of the Queensland Museum* 46(2): 443-459.
- DETMANN, M.E. & CLIFFORD, H.T. 2001. The fossil record of *Elaeocarpus* L. fruits. *Memoirs of the Queensland Museum* 46(2): 461-497.
- EWART, A. 2001. Dusk chorusing behaviour in cicadas (Homoptera: Cicadidae) and a mole cricket, Brisbane, Queensland. *Memoirs of the Queensland Museum* 46(2): 499-510.
- FRITH, C.B. & FRITH, D.W. 2001. Fidelity to bowers, adult plumage acquisition, longevity and survival in male Golden Bowerbirds *Prionodura newtoniana* (Ptilonorhynchidae). *Emu* 100: 249-263.
- FRITH, C.B. & FRITH, D.W. 2001. Display behaviour of the adult male Golden Bowerbird *Prionodura newtoniana* at the bower. *Australian Bird Watcher* 19: 3-13.
- FRITH, C.B. & FRITH, D.W. 2001. Bowerbirds (Ptilonorhynchidae) biometrics with observations on sexual dimorphism and intraspecific variation. *Memoirs of the Queensland Museum* 46(2): 521-542.
- GALLOWAY, I. 2000. What makes a great Museum? Part one. *Artefact* 5(3): 10-11.
- GALLOWAY, I. 2000. What makes a great Museum? Part two. *Artefact* 5(4): 18-19.

- GHOLAMALIAN, H., TURNER, S., BURROW, C.J. & YAZDI, M. 2000. Recovery of Late Devonian (Frasnian) microvertebrates and conodonts from the Chahrisheh area, north east Esfahan, Iran. In Palaeontology Down Under 2000. Kinross Wolaroi July 11-15, 2000. Geological Society of Australia Abstracts no. 61: 159.
- GIANNINI, C., DEBITUS, C., LUCAS, R., UBEDA, A., PAYÁ, M., HOOPER, J.N.A. & D'AURIA, M.V. 2001. New Sesquiterpene derivatives from the sponge *Dysidea* sp. with a selective inhibitor profile against human phospholipase A2 and other leukocyte functions. *Journal of Natural Products* 64: 612-618.
- HALLETT, S.L., ERSÉUS, C., O'DONOGHUE, P.J. & LESTER, R.J.G. 2001. Parasite fauna of Australian marine oligochaetes. *Memoirs of the Queensland Museum* 46(2): 555- 576.
- HEALY, J.M., LAMPRELL, K. & KEYS, J.L. 2001. The 'water-trap' spiny oyster, *Spondylus varius* G.B. Sowerby I, 1827 (Mollusca: Bivalvia: Spondylidae) from Australia. *Memoirs of the Queensland Museum* 46(2): 577-588.
- HICKMAN, N., ADLARD, R.D., HEASMAN, M. & LYALL, I. 2000. Introduction and background on flat oysters and their culture. P. 7. In Heasman & Lyall (eds) Problems of producing and marketing the flat oyster *Ostrea angasi* in NSW. Fisheries Research Report Series: 6. (NSW Fisheries Research Institute: Cronulla, Australia).
- HOCKNULL, S.A. 2000. Remains of an Eocene skink from Queensland. *Alcheringa* 42: 63-64.
- HOOPER, J.N.A. (ed.) 2000. Sensational Sea Creatures. Pp. 1-23 (authors J. Hooper, S. Cook, P. Davie, J. Johnson, S. List-Armitage, D. Potter). Feature series, 15 October - 4 November 2000. (Queensland Newspapers Pty Ltd, Sunday Mail - Courier Mail: Brisbane).
- HOOPER, J.N.A., KENNEDY, J.A. & QUINN, R. 2000. Biodiversity 'hotspots', patterns of richness and endemism, and taxonomic affinities of tropical Australian sponges (Porifera). P. 81. In Hopley, D., Hopley, P.M., Tamelander, J. & Done, T. (eds) Proceedings of the Ninth International Coral Reef Symposium. (State Ministry for the Environment, Indonesia, Indonesian Institute of Sciences, and The International Society for Reef Studies: Bali, Indonesia).
- HUGHES, T.P., CORNELL, H.V., CALEY, M.J., KARLSON, R.H., WALLACE, C.C AND WOLSTENHOLME, J. 2000. Local and regional patterns in the community structure of corals. P. 5. In Hopley, D., Hopley, P.M., Tamelander, J. & Done, T. (eds) Proceedings of the Ninth International Coral Reef Symposium. (State Ministry for the Environment, Indonesia, Indonesian Institute of Sciences, and The International Society for Reef Studies: Bali, Indonesia).
- JOCQUÉ, R. & BAEHR, B. 2001. Revisions of genera in the *Asteron*-complex (Araneae: Zodariidae). *Asteron* Jocqué and the new genus *Pseudoasteron*. *Records of the Australian Museum* 53: 21-36.
- JOHNSON, J.W. 2000. Family haemulidae (sweetlips and grunts). In Randall, J.E. & Lim, K.K.P. (eds) A checklist of the fishes of the South China Sea. The Raffles Bulletin of Zoology, supplement 8: 569-667.
- JOHNSON, J.W., RANDALL, J.E. & CHENOWETH, S.F. 2001. *Diagramma melanacrum* new species of haemulid fish from Indonesia, Borneo and the Philippines with a generic review. *Memoirs of the Queensland Museum* 46(2): 657-676.
- JONES, P.J. (Convenor), METCALFE, I., ENGEL, B.A., PLAYFORD, G., RIGBY, J., ROBERTS, J., TURNER, S. & WEBB, G.E. 2000. Chapter 5: Carboniferous biogeography of Australasia. In Wright, A., Talent, J.A., Young, G.C. & Laurie, J. (eds) Palaeobiogeography of the Australasian fauna and flora. *Memoirs AAP* 23: 259-286.
- JONES, R.K. & TURNER, S., FORDHAM, B.G. 2000. Late Devonian fauna from the Columbine Sandstone (Coffee Hill Member), Gap Creek, central New South Wales. In Blicek, A. & Turner, S. (eds) Final Report of IGCP 328 (1991-1996), Courier Forschungsinstitut Senckenberg 223: 523-541.
- JUST, J. 2001. *Platyprotus phyllosoma*, gen. nov., sp. nov., from Enderby Land, Antarctica, an unusual Munnopsidid without natatory pereopods (Crustacea: Isopoda: Asellota). *Memoirs of Museum Victoria* 58(2): 335-345.
- KEEGAN, A.E. 2001. The Museum of Tropical Queensland's Volunteer Program. *Artefact* 6(1): 12.
- KILLDAY, K.B., YARWOOD, D., SILLS, M.A., MURPHY, P.T., HOOPER, J.N.A. & WRIGHT, A.E. 2001. Microxine, a new cdc2 kinase inhibitor from the Australian marine sponge *Microxina* sp. *Journal of Natural Products* 64(4): 525-526.
- KOHOUT, R.J. 2000. A review of the distribution of the *Polyrhachis* and *Echinopla* ants of the Queensland Wet Tropics (Hymenoptera: Formicidae: Formicinae). *Memoirs of the Queensland Museum* 46(1): 183-209.
- KOSUGE, T. & DAVIE, P.J.F. 2001. Redescription of *Macrophthalmus boteltobagoe* and *M. holthuisi* with notes on their ecology (Brachyura: Ocypodidae). *Journal of Crustacean Biology* 21(2): 545-555.
- LAMPRELL, K.L. 2001. Rectification of nomenclature and notes on species of *Spondylus* Linnaeus (Bivalvia: Pectinoidea: Spondylidae) from the Indo-Pacific. *Vita Marina* 47: 131.
- LAMPRELL, K.L., STANISIC, J. & CLARKSON, P. 2001. Spondylids from the Mediterranean Sea and Atlantic Ocean (Bivalvia: Pectinoidea: Spondylidae). *Memoirs of the Queensland Museum* 46(2): 611-622.

- LAMPRELL, K.L., STANISIC, J. & CLARKSON, P. 2001. Some spondylids from the Pacific Ocean (Bivalvia: Pectinoidea: Spondylidae). *Memoirs of the Queensland Museum* 46(2): 623-628.
- LOHMANN, U. & SACHS, S. 2001. Observations on the postcranial morphology, ontogeny and palaeobiology of *Sclerocephalus haeuseri* (Amphibia: Actinodontidae) from the Lower Permian of Southwest Germany. *Memoirs of the Queensland Museum* 46(2): 771-781.
- McDONALD, J.I., HOOPER, J.N.A. & MCGUINNESS, K.A. 2000. Environmentally influenced variability in morphology of *Cinachyra australiensis*. P. 82. In Hopley, D., Hopley, P.M., Tamelander, J. & Done, T. (eds) *Proceedings of the Ninth International Coral Reef Symposium*. (State Ministry for the Environment, Indonesia, Indonesian Institute of Sciences, and The International Society for Reef Studies: Bali, Indonesia).
- McKAY, J.M. 2000. The exhibits of tropical Australia. Pp. 119 -127. In *Colonial City Global City: Sydney's International Exhibition 1879*. (Crossing Press: Sydney).
- McKAY, J.M. 2000. The Queensland Museum celebrates: Queensland 1901. *Artefact* 5(4): 12-13.
- McCASKIE, G. 2000. The Non-Collection Policy. *Artefact* 5(3): 6.
- MONTEITH, G.B. & FIELD, L.H. 2001. Australian king crickets: distribution, habitats and biology (Orthoptera: Anostostomatidae) Pp. 79-94. In Field, L.H. (ed.) *The biology of wetas, king crickets and their allies*. (CABI Publishing: Walingford, UK).
- MURRAY, M.D., PALMA, R.L., PILGRIM, R.L.C. & SHAW, M.D. 2001. Ectoparasites of Australian, New Zealand and Antarctic Birds. Ch. 5, pp. 1261-1263. In Higgins, P.J., Peter, J.M. & Steele, W.K. (eds) *Handbook of Australian, New Zealand and Antarctic Birds. Tyrant-flycatchers to Chats*. (Oxford University Press: Melbourne).
- O'KEEFE, S.T. & MONTEITH, G.B. 2000. *Clidicus abbotensis* O'Keefe, a new species of Scydmaenidae (Coleoptera: Staphylinioidea) from Australia with description of the larva. *Memoirs of the Queensland Museum* 46(1): 211-223.
- OTTO, J.C. 2000. Simognathinae (Acarina: Halacaridae) from the Great Barrier Reef and Coral Sea, description of thirteen new species. *Memoirs of the Queensland Museum* 45(2): 505-534.
- OTTO, J.C. 2000. Halacaridae from the Great Barrier Reef and Coral Sea: the genera *Lohmannella*, *Scaptognathides* and *Scaptognathus* (Acarina: Halacaridae: Lohmannellinae). *Memoirs of the Queensland Museum* 45(2): 535-555.
- OTTO, J.C. 2000. *Acarochelopodia* and *Actacarus* species (Acari: Halacaridae) from Australia, and remarks on *A. pacificus* and *A. orthotectus*. *Species Diversity* 5: 111-127.
- OTTO, J.C. 2000. *Australacarus* (Acari: Halacaridae) from northern Australia, with the description of three new species. *Records of Western Australian Museum* 20: 103-114.
- OTTO, J.C. 2000. *Sponihalacarus longiscutus* n. gen., n. sp., a marine mite (Acari: Prostigmata: Halacaridae) associated with an alga-sponge symbiosis from the Great Barrier Reef lagoon in Australia. *International Journal of Acarology* 26: 279-283.
- OTTO, J.C. 2000. *Xenohalacarus longirostris* n. gen., n. sp., a marine mite (Acari: Halacaridae: Lohmannellinae) from Chilcott Islet, Australia. *International Journal of Acarology* 26: 285-291.
- OTTO, J.C. 2001. Halacaridae from the Great Barrier Reef lagoon and Coral Sea: *Halacarellus* and *Halacarus* (Acarina: Halacaroidea). *Memoirs of the Queensland Museum* 46(2): 691-716.
- OTTO, J.C. 2001. Halacaridae of the Great Barrier Reef Lagoon and Coral Sea: the *Copidognathus ornatus* group (Acarina: Prostigmata: Halacaridae). *Memoirs of the Queensland Museum* 46(2): 717-731.
- PAULAY, G. & WALLACE, C.C. 2000. Local extinction of *Acropora* coral species on Niue Island (South Pacific) during a regression caused by tectonic uplift. P. 58. In Hopley, D., Hopley, P.M., Tamelander, J. & Done, T. (eds) *Proceedings of the Ninth International Coral Reef Symposium*. (State Ministry for the Environment, Indonesia, Indonesian Institute of Sciences, and The International Society for Reef Studies: Bali, Indonesia).
- PICKETT, J.W. (Convenor), BURROW, C.J., HOLLOWAY, D.J., MUNSON, T.J., PERCIVAL, I.G., RICKARDS, R.B., SHERWIN, L., SIMPSON, A.J., STRUSZ, D.L., TURNER, S. & WRIGHT, A.J. 2000. Chapter 3: Silurian. In Wright, A., Young, G.C., Talent, J.A. & Laurie, J. (eds) *Palaeobiogeography of the Australasian faunas and floras*. *Memoirs AAP* 23: 127-165.
- POWELL, J. 2000. Cab Sir. *Australian Carriage Driving Journal* 25(84): 10.
- QUINNELL, M.C. 2000. 'Before it has become too late': the making and repatriation of Sir William MacGregor's official collection from British New Guinea. Pp. 81-102. In O'Hanlon, M. & Welsch R.L. (eds) *Hunting the gatherers: ethnographic collectors, agents and agency in Melanesia, 1870s-1930s*. (Berghahn: New York, Oxford).
- RAVEN, R.J. 2001. A new Funnelweb spider (*Hadronyche*: Hexathelidae, Mygalomorphae) from north Queensland. *Memoirs of the Queensland Museum* 46: 225-230.
- RAVEN, R.J. 2001. Obituary: Raymond Robert Forster, QSO, DSc NZ *Otago*, FRSNZ, FESNZ, FMANZ 1922-2000. *Yearbook of the Academy Council of the Royal Society of New Zealand* 2000: 65-68.

- REITNER, J., THIEL, V., ZANKL, H., MICHAELIS, W., WÖRHEIDE, G. & GAUTRET, P. 2000. Organic and biogeochemical patterns in cryptic microbialites. Pp. 149-160. In Riding, R.E. & Awramik, S.M. (eds) *Microbial Sediments*. (Springer Verlag: Berlin).
- REITNER, J., WÖRHEIDE, G., LANGE, R. & SCHUMANN-KINDEL, G. 2001. Coralline Demosponges - a geobiological portrait. In Mori, K., Ezaki, Y. & Sorauf, J. (eds) *Proceedings of the 8th International Symposium on Fossil Cnidaria and Porifera, September 1999, Sendai*. *Bulletin of the Tohoku University Museum* 1: 219-235.
- ROSS, A. & NEWMAN, W.A. 2000. A new coral-eating barnacle: the first record from the Great Barrier Reef, Australia. *Memoirs of the Queensland Museum* 45: 585-591.
- ROWE, C., STANISIC, J., DAVID, B. & LOURANDOS, H. 2001. The helicid land snail *Pleuropoma extincta* (Odhner, 1917) as an environmental indicator in archaeology. *Memoirs of the Queensland Museum* 46(2): 741-770.
- SCHONBERG, C.H.L. 2000. Bioeroding sponges common to the central Australian Great Barrier Reef: descriptions of three new species, two new records, and additions to two previously described species. *Senckenbergiana maritima* 30: 161-221.
- SHERIDAN, R. 2000. Cinderella revisited? Loans Services: 29 years down the track. Where to now? *Museums Australia Education Group* 1: 7-8.
- SHAW, M.D. 2000. Mites from Australian Parrots and their Nests. *Eclectus* 7: 8-10.
- SHORT, J.W. & MEEK, P. 2000. New records of *Macrobrachium* (Crustacea: Decapoda: Palaemonidae) from Christmas Island, Indian Ocean. *Records of the Western Australian Museum* 20(1): 81-86.
- STANISIC, J. 2000. Taxonomy of the Australian rainforest snail *Helix bellendenkerensis* Brazier, 1875 (Mollusca: Eupulmonata: Camaenidae). *Memoirs of the Queensland Museum* 46(1): 337-348.
- STANISIC, J. 2000. Pitter patter of little feet. *Wildlife Australia* 37(2): 36-37.
- STANISIC, J. 2000. Invertebrates as bioindicators. How green is your valley? *Wildlife Australia* 37(3): 36.
- STANISIC, J. 2001. Invertebrates as bioindicators. Are biological surveys environmentally friendly? *Wildlife Australia* 37(4): 32-33.
- STANISIC, J. 2001. Survey for the land snail *Thersites mitchellae* in the proposed Tugun Bypass Route. Report to PPK Environment & Infrastructure Pty Ltd. (Queensland, Museum: Brisbane).
- STANISIC, J. 2001. Invertebrates as bioindicators. Aquatic macroinvertebrates. *Wildlife Australia* 38(1): 32-33.
- STEMMLER, R. 2000. Knights in shining armour school holiday activities at Cobb & Co. *Artefact* 5(3): 7.
- STOREY, R.I. & MONTEITH, G.B. 2000. Five new species of *Aptenocanthion* Matthews (Coleoptera: Scarabaeidae: Scarabaeinae) from tropical Australia, with notes on distribution. *Memoirs of the Queensland Museum* 46(1): 349-358.
- THOMPSON, G.I. 2000. Illustrating insects - an Australian perspective. *Guild of Natural Science Illustrators* 2000(9): 1, 4-9.
- TURNER, S. 2000. The importance of coprolite events. *Ichthyolith Issues* 20, 38 on WWW site: 28-29.
- TURNER, S. 2000. New Llandovery to early Pridoli microvertebrates including Early Silurian zone fossil, *Loganellia avonia* nov. sp., from Britain. In Blicek, A. & Turner, S. (eds) *IGCP: 328, Final Report*. *Courier Forschungsinstitut Senckenberg* 223: 91-127.
- TURNER, S. 2000. IGCP 406: Circum-Arctic Palaeozoic Vertebrates. *The Australian Geologist* 117: 41-43.
- TURNER, S. 2001. Book review. *Tales from the riverbank amphibian biology*. Vol. 4 *Palaeontology*. The evolutionary history of amphibians. (By Heatwole, H. & Carroll, R.L. 2000. Surrey Beatty & Sons: Chipping Norton, NSW). *The Australian Geologist* 118: 37-38.
- TURNER, S., BASDEN, A. & BURROW, C.J. 2000. Devonian vertebrates of Queensland. In Blicek, A. & Turner, S. (eds) *IGCP: 328, Final Report*. *Courier Forschungsinstitut Senckenberg* 223: 487-521.
- TURNER, S. & BURROW, C.J. 2000. Vertebrate zonation of East Gondwana, B705di000 - B70ds00. In WEDDIGE, K. (ed.) *Devon-Korrelationstabelle. Ergänzungen 2000*. *Senckenberg lethaea* 80(2): 77. Frankfurt am Main.
- TURNER, S. & BURROW, C.J. 2000. Annotations to the Devonian Correlation Table, B705di000 - B70ds00: Microvertebrate zonation of East Gondwana. *Senckenberg lethaea* 80(2): 761-763. Frankfurt am Main.
- TURNER, S. & SCHULTZE, H-P. 2000. Memorial Dr Hans Ludolph Jessen, 1935-1999. *Ichthyolith Issues* 20, 38 on WWW site: 12-13.
- VAN DYCK, S. 2000. KFC with a kick. *Nature Australia* 26(9): 20-21.
- VAN DYCK, S. 2000. A coil to account. *Nature Australia* 26(10): 20-21.
- VAN DYCK, S. 2001. The happy hooker? *Nature Australia* 26(11): 20-21.

- VAN DYCK, S. 2001. Masks, high heels and spurs. *Nature Australia* 26(12): 18-19.
- WALLACE, C.C. 2000. Staghorn corals of the world, 2nd Edition. (Revision included all colour plates and numerous typographical errors in text and tables) (CSIRO Publishing: Melbourne).
- WALLACE, C.C. 2000. Journey to the centre of the centre: origins of high marine faunal diversity in central Indonesia from the perspective of an Acropologist. P. 2. In Hopley, D., Hopley, P.M., Tamelander, J. & Done, T. (eds) Proceedings of the Ninth International Coral Reef Symposium. (State Ministry for the Environment, Indonesia, Indonesian Institute of Sciences, and The International Society for Reef Studies: Bali, Indonesia).
- WALLACE, C.C. 2001. Wallace's line and marine organisms: the distribution of staghorn corals (*Acropora*) in Indonesia. Pp. 171-181. In Metcalf, I., Smith, J.M.B., Morwood, M. & Davidson, I. (eds) Faunal and floral migrations and evolution in SE Asia-Australasia. (Balkema: Lisse).
- WALLACE, C.C. & AW, M. 2000. *Acropora* staghorn corals. A 'getting to know you' and identification guide. Indian Ocean: South East Asia: Pacific Ocean. (Ocean Environment Ltd.: Australia).
- WALLACE, C.C., PAULAY, G., HOEKSEMA, B.W.H., BELLWOOD, D.R., HUTCHINGS, P., BARBER, P.H., ERDMANN, M. & WOLSTENHOLME, J. 2000. Nature and origins of unique high diversity reef faunas in the Bay of Tomini, Central Sulawesi: the ultimate 'centre of diversity'? P. 46. In Hopley, D., Hopley, P.M., Tamelander, J. & Done, T. (eds) Proceedings of the Ninth International Coral Reef Symposium. (State Ministry for the Environment, Indonesia, Indonesian Institute of Sciences, and The International Society for Reef Studies: Bali, Indonesia).
- WEI, N.V., WALLACE, C.C., DAI, C.-F., LIU, S.-I.V. & CHEN, C.A. 2000. Population genetic analyses of the ribosomal internal transcribed spacer 2 in *Acropora* (Cnidaria, Scleractinia): effect of ancestral polymorphism in evolutionary history of *Acropora*. P. 22. In Hopley, D., Hopley, P.M., Tamelander, J. & Done, T. (eds) Proceedings of the Ninth International Coral Reef Symposium. (State Ministry for the Environment, Indonesia, Indonesian Institute of Sciences, and The International Society for Reef Studies: Bali, Indonesia).
- WILSON, S.K. 2000. Geckos: the eyes have it. *Australian Geographic* 59: 72-89.
- WILSON, S.K. Lizard on the brink. *Wildlife Australia* 38(1): 6.
- WILSON, S.K. 2001. Living high of the heath. *Wildlife Australia* 38(2): 19.
- WOERHEIDE, G., DEGNAN, B.M. & HOOPER, J.N.A. 2000. Population phylogenetics of the common Coral reef sponges *Leucetta* spp. and *Pericharax* spp. (Porifera: Calcarea) from the Great Barrier Reef and Vanuatu. P. 23. In Hopley, D., Hopley, P.M., Tamelander, J. & Done, T. (eds) Proceedings of the Ninth International Coral Reef Symposium. (State Ministry for the Environment, Indonesia, Indonesian Institute of Sciences, and The International Society for Reef Studies: Bali, Indonesia).
- WOERHEIDE, G., DEGNAN, B.M., HOOPER, J.N.A. & REITNER, J. 2000. Biogeography and taxonomy of the Indo-Pacific reef cave dwelling coralline demosponge *Astrosclera willeyana* - new data from nuclear its gene sequences. P. 331. In Hopley, D., Hopley, P.M., Tamelander, J. & Done, T. (eds) Proceedings of the Ninth International Coral Reef Symposium. (State Ministry for the Environment, Indonesia, Indonesian Institute of Sciences, and The International Society for Reef Studies: Bali, Indonesia).
- WOERHEIDE, G., HOOPER, J.N.A, GAGAN, M. & DEGNAN, B.M. 2000. Multidisciplinary Geobiological approach to a fundamentally problematic group of coral reef sponges: calcareous sponges (Porifera: Calcarea) from the Great Barrier Reef. P. 83. In Hopley, D., Hopley, P.M., Tamelander, J. & Done, T. (eds) Proceedings of the Ninth International Coral Reef Symposium. (State Ministry for the Environment, Indonesia, Indonesian Institute of Sciences, and The International Society for Reef Studies: Bali, Indonesia).
- WOLSTENHOLME, J. 2000. Species boundaries in scleractinian corals. P. 23. In Hopley, D., Hopley, P.M., Tamelander, J. & Done, T. (eds) Proceedings of the Ninth International Coral Reef Symposium. (State Ministry for the Environment, Indonesia, Indonesian Institute of Sciences, and The International Society for Reef Studies: Bali, Indonesia).
- YAZDI, M. & TURNER, S. 2000. Late Devonian and Carboniferous vertebrates from the Shishtu and Sardar formations of the Shotori Range, central Iran. *Records of the Western Australian Museum Supplement* No. 58: 205-222.
- YOUNG, G.C. & TURNER, S. 2000. East Gondwana Devonian overview. In Blicek, A. & Turner, S. (eds) Final Report of IGCP 328(1991-1996), Courier Forschungs-Institut Senckenberg 223: 453-470.

APPENDIX II

GRANTS WON AND CONSULTANCIES

Queensland Museum staff were either individually or in cooperation with other agencies awarded 31 competitive or specific purpose external grants with total value of \$712,850. Some of these grants were administered by the partner organisation.

Grantee	Project	From	Amount
Drs R.D ADLARD & M.A. PEIRCE	Characterisation of blood-borne parasites of Australian birds	Australian Biological Resources Study	\$8,000
Drs B.C. BAEHR & R.J. RAVEN	Australian Ant Spiders (Araneae, Zodariidae, Storeninae): biodiversity of the Australian fauna, taxonomy, systematics and phylogeny of Australian species	Australian Biological Resources Study,	\$40,000
Dr M. BRYANT	Characterisation of the Nematomorpha of Australia: a pictorial key to aid in their identification	Australian Biological Resources Study	\$3,000
Dr L.R.G. CANNON	Taxonomy of the typhloplanid microturbellarians (Platyhelminthes) of Australia	Australian Biological Resources Study	\$35,000
Drs L.R.G. CANNON, T. H. CRIBB, M.K. JONES & I. BEVERIDGE	The Platyhelminthes of Australia: an interactive, pictorial Web-based database of species, relationships, distribution, habitats and hosts	Australian Biological Resources Study	\$40,000
COBB & CO. MUSEUM	Cavalcade of Transport	Centenary of Federation Qld (total value \$20,000)	\$2,000
COBB & CO. MUSEUM	Think Link Tourism Project	Dept of Employment Workplace Relations & Small Business, Regional Assistance Program (total value \$150,211)	\$81,933
Mr P. DAVIE	Crab checklist workshop	University of Singapore	\$3,500
Dr V.E. DAVIES	New spiders (Araneae: Amaurobioidea) from Australian forests	Australian Biological Resources Study	\$10,000
Dr J.N.A. HOOPER	Attend the 9th International Coral Reef Symposium, Indonesia	AstraZeneca R&D Griffith University	\$4,451
Dr J.N.A. HOOPER	Participation in a survey of the marine fauna of Vanuatu	ORSTOM Centre de Noumea	\$2,982
R.J. KOHOUT	Ernst Mayr Grant to visit the Museum of Comparative Zoology, Harvard to study types and other Polyrhachis material	Harvard University, Cambridge, Mass. USA.	\$2,500
R.J. KOHOUT	Towards a complete treatment of the Australian spiny ants, Polyrhachis (Formicidae: Formicinae); Revision of the subgenus Hagiomyrma Wheeler	Australian Biological Resources Study	\$5,000
Dr P. MATHER	Taxonomy of the Ascidiacea	Australian Biological Resources Study	\$52,500
Dr G.B. MONTEITH	Survey and mapping of rainforest insects	Cooperative Research Centre for Tropical Rainforest Ecology and Management	\$15,000
MUSEUM LOANS	10 'Living in Federation Times - Museum in a Trunk' kits	Centenary of Federation & National Trust (Qld)	\$32,000
MTQ, MARATIME ARCHAEOLOGY	Historic shipwrecks program.	Environment Australia	\$45,480
MTQ, CONSERVATION SECTION	The significance of in-situ corrosion potential measurements for the management of maritime archaeology sites	Environmental Protection Agency, Queensland Community and Cultural Heritage Incentive Program 1999-2001 (administered through James Cook University)	\$18,000

Grants Won (Cont.)

Grantee	Project	From	Amount
MTQ EDUCATION SECTION	Children of the revolution - display for Centenary of Federation celebrations	Centenary of Federation	\$26,690
QUEENSLAND SCIENCENTRE	STAP Student Innovation Awards	Science and Technology Awareness Program of the Department of Industry, Science and Resources	\$42,000
QUEENSLAND SCIENCENTRE	Teen Scene: Teenage science enrichment experiences on the Queensland Sciencentre Roadshow	Science and Technology Awareness Program of the Department of Industry, Science and Resources	\$24,750
Dr G. POTTER	Junior Volunteer Program	Lucent Technologies Foundation	\$38,644
Drs R.J. RAVEN & M.S. HARVEY	Interactive Key to Australian Spider Subfamilies	Australian Biological Resources Study	\$40,000
Dr R.J. RAVEN	Collections of Dr R.R. Forster	American Museum of Natural History	\$2,000
Dr R.J. RAVEN	Obituary of Dr R.R. Forster	Royal Society of New Zealand	\$900
Dr S. TURNER	Fossil fish from the Famennian Red Hill tetrapod-bearing site in Pennsylvania	Academy of Natural Sciences, Philadelphia	\$1,000
Dr S. TURNER	Attend 15th Senckenberg Conference	Senckenberg Museum	\$2,000
Dr S. TURNER & Assoc. Prof. A.A. WARREN	The gap closes: testing the Mississippian Tetrapod Province hypothesis	Australian Research Council Large Grant	\$43,000
Dr C. WALLACE	Some questions of relevance to the Indo-Pacific centre of diversity	Australian Research Council (\$157,000 over three years)	\$55,000
Dr G. WOERHEIDE	Attend the 9th International Coral Reef Symposium, Indonesia	University of Göttingen, Germany	\$2,500
Drs G. WOERHEIDE & J.N.A. HOOPER	Biodiversity of the Great Barrier Reef Calcareous sponges	Australian Biological Resources Study	\$33,020

CONSULTANCIES

Queensland Museum carried out consultancies and provided other services to the community for a total value of \$677,000, down 8% on the record 1999-2000 result.

Grantee	Project	From
Dr R.D. ADLARD	Mollusc disease workshop	American Fisheries Society
Dr R.D. ADLARD	Diagnosis of Marteiliopsis of rock oysters in eastern Australia	NSW Fisheries
Dr P. ARNOLD	Reviewing fees	CRC Reef
Dr C.J. BURWELL	Identification and investigation of wasps associated with galls of the fly <i>Fergusonina</i> sp on Broad-leafed Paperbark, <i>Melaleuca quinquenervia</i>	United States Department of Agriculture Agricultural Research Service Australian Biological Control Laboratory
Dr C.J. BURWELL	Recollect the 'Mallee Monster' <i>Akapala</i> sp. (Eucharitidae) at Mt Isa	Royal Ontario Museum, Canada
Dr C.J. BURWELL	Identification of insect contaminants	Golden Circle Pty Ltd
COBB & CO. MUSEUM	Federation: Queensland's Story	Federation History and Education Program
COBB & CO. MUSEUM	Groom Grant	Federation Community Projects Program
COBB & CO. MUSEUM	Stage 2 development	Queensland Heritage Trails Network
Dr A. COOK	Lark Quarry Dinosaur Trackways	Heritage Trails Network
Ms J.A. COVACEVICH	Charles Tanner Gallery, Cooktown Interpretive Centre Exhibition: The Wildlife of Cape York Peninsular	The Charles Tanner Estate (executor Mr D. Kempton)
Mr G. CZECHURA	Status and distribution of Red Goshawk	Queensland Parks & Wildlife Service
Mr G. CZECHURA	Status and distribution of Red Goshawk	Cape York Natural Heritage Trust
Mr P. DAVIE	Publication of mud crab poster	Queensland Department of primary Industries & Australian Centre for Agricultural Research
Mr P. DAVIE	Identification of benthic crustaceans	James Cook University
Dr J.N.A. HOOPER	Biodiversity and pharmaceutical surveys of Queensland's marine fauna	AstraZeneca R&D Griffith University
Dr J.N.A. HOOPER	Taxonomy of Introduced Marine Pests baseline surveys (Karumba & Townsville)	James Cook University, School of Biological Sciences
Dr J.N.A. HOOPER	Recollection of bioactive marine sponges	AstraZeneca R&D Griffith University
Dr J.N.A. HOOPER	Identification of sessile marine invertebrates	Environment Australia
Dr J.N.A. HOOPER	Taxonomy of biomedically important marine sponges from Japan, the Philippines and W.A.	University of the Ryukyus, Japan; Nagoya University, Japan; US National Cancer Institute, Maryland; Australian Institute of Marine Science, Townsville
Dr J.N.A. HOOPER	Taxonomy of marine sponges from the Gulf of Thailand	Fisheries Resources Research Unit, Aquatic Resources Research Institute, Chulalongkorn University, Bangkok
GEOLOGY AND PALAEOONTOLOGY	Work For the Dole Projects, Commonwealth Government	Commonwealth Government
Ms. C. IANNA	Conservation Survey and Management Plan	Roma Town Council
Ms. C. IANNA	Conservation of Archaeological Material	Brisbane City Council
Ms. C. IANNA	Conservation Learning resource	Arts Training Qld
Ms. C. IANNA	Conservation Disaster Preparedness Training Workshop	MAQ/RGAQ TPDP
Dr G.B. MONTEITH	Supply of insect material for DNA analysis	Harvard University
Dr G.B. MONTEITH	Supply of insect material for DNA analysis	University of Arizona
Dr G.B. MONTEITH	Supply of insect material for DNA analysis	Natural History Museum, London
Dr G.B. MONTEITH	Identification of insect food contaminants	Golden Circle Ltd

Consultancies (*Cont.*)

Grantee	Project	From
Dr G.B. MONTEITH	Identification of insects in perentie scats	Australia Zoo
Dr G.B. MONTEITH	Identification of medical insects	Sullivan Nicolaides
Dr G.B. MONTEITH	Identification of Customs seizure insects	Environment Australia
Dr G.B. MONTEITH & Dr C.J. BURWELL	Ecotourism workshop	Boonah Shire Council
Dr G.B. MONTEITH & Dr C.J. BURWELL	Supply of 300 insect bioprospecting samples	AstraZeneca R&D Griffith University
Drs G.B. MONTEITH & C.J. BURWELL	Ecotourism Insect Workshop	Boonah Shire Council
MUSEUM LOANS SERVICE	10 'Urban Forest Early Childhood Kits'	Brisbane City Council
MUSEUM LOANS SERVICE	Subscriptions and loans	Various clients
Dr R.J. RAVEN	Identification of Tasmanian World Heritage Area spiders	DPI, Tasmania
Mr G.I. THOMPSON	Insect illustration	NSW National Parks Service
Dr S. VAN DYCK	Monitoring status of False Water-rat at Coomera Waters development	Austcorp International Pty Ltd.: (continuing consultancy)
Dr S. VAN DYCK	Consultancy for TV show	60 Minutes
Dr S. VAN DYCK	Hire of natural history props	Best Picture Show
Dr C. WALLACE	Identify Acropora	Hawaii Aquarium
Dr C. WALLACE	Identify coral specimens	University of Queensland
Mrs J. WILKINSON	Preparation of vertebrate fossil	Private collector
VERTEBRATE ZOOLOGY SECTION	Data sales and analyses, identifications, specimen loan, advice	Various clients

The Queensland Museum engaged consultants on the following basis.

Consultant	Project	Cost
John Lyneham	Public relations advice	\$13,000
Education Queensland	Development of Science Modules	\$10,000
Food Service Design	Advice on coffee shop design, MTQ	\$800
CSIRO	Assessment of organic pollutants	\$200
Coleman Doyle	Multimedia preparation	\$700
Diamond Media	Non-linear editing	\$400

APPENDIX III
ANNUAL PERFORMANCE INDICATORS

	2000/2001	1999/2000	1998/99
A. ACCESS			
1. USE OF SERVICES			
(a) Main Museum			
Gallery visitors	314,858	* 312,499	421,705
Group visitors (schools)	38,661	43,424	58,833
Venue Total	353,519	* 355,923	480,538
(b) Queensland Sciencecentre			
Gallery visitors	111,830	96,623	97,740
Group visitors (schools)	33,510	39,637	37,966
Venue Total	145,340	136,260	135,706
(c) Museum of Tropical Queensland			
Gallery visitors	66,553	13,868	7,166
Group visitors (schools)	6,289	998	
Venue Total	72,842	14,866	7,166
(d) Cobb & Co.			
Gallery visitors	13,864	14,186	15,202
Group visitors (schools)	4,622	4,078	3,537
Venue Total	18,486	18,264	18,739
(e) WoodWorks			
Gallery visitors	4,798	4,840	5,494
Group visitors (schools)	1,699	2,123	2,187
Venue Total	6,497	6,963	7,681
(f) Lands, Mapping and Surveying			
Gallery visitors	(est) 840	(est) 2,950	(est) 2,300
Group visitors (schools)	100	50	180
Venue Total	(est) 940	(est) 3,000	(est) 2,480
(g) Glenlyon Dam			
Visitors	(est) 21,000	(est) 38,200	(est) 86,900
(h) Museum of North-Western Queensland			
Visitors	12,290	20,838	24,468
Total Gallery Visitors	630,914	* 594,314	763,678

* previously published figures in error by +43,424

Queensland Museum Appendix III — Annual Performance Indicators

	2000/2001	1999/2000	1998/99
2. USE OF ALL SERVICES			
(a) All Venues			
(Including Travelling Display visitors, public enquiries, professional enquiries, loans audience, web site page views, mail and e-mail enquiries, Educational Outreach audience)			
Total Units of Service	2,579,552	1,831,079	1,899,587
3. EXPENDITURE PER UNIT OF SERVICE			
(a) All Venues			
Per unit of service costs relating to:			
Government Grant	\$4.68	\$6.49	\$6.15
Total Expenditure	\$6.97	\$10.82	\$9.47
4. NUMBER OF NEW LOANS MADE			
(a) All Venues			
Scientific Users	23,777	20,676	14,590
Educational Users	5,534	7,143	6,392
Library Users	1,624	2,243	2,672
Total New Loans	30,935	30,062	23,654
5. VOLUNTEER INVOLVEMENT - ALL VENUES			
Number of volunteer person days	7,573	6,181	6,380
Honorary staff appointed as:			
Hon. Associates	13	13	12
Hon. Research Fellows	28	26	20
Hon. Consultants	19	22	22
Hon. Docents	228	231	253
Hon. Administrative Assistants	11	1	2
Hon. Technical Assistants	277	269	291
Hon. Medical Officer	1	1	1
Hon. Dive Master	1	1	2
Total Honorary Staff	578	564	603
6. PUBLIC GROUP USAGE - ALL VENUES			
Learned societies	167	284	160
Community education	289	350	227
Business	62	296	24
Other	35	14	9
Total	553	901	420
7. EXTENSION EDUCATION USE - ALL VENUES			
Number of schools involved	0	39	62
Number of students reached	0	33,476	10,026

Note: Service discontinued

	2000/2001	1999/2000	1998/99
B. VISITOR CARE			
1. VISITOR SATISFACTION - ALL VENUES			
% planning revisit	91	90	90
Frequency of visits (%):			
first visit	68	65	67
one previous	21.5	21	21
two previous	15	15	15
> two previous	15	14	14
Visit duration > 2 hours	46	47	46
2. PUBLIC COMPLAINTS			
Number/10,000 visitors	0.38	0.65	0.35
C. DISPLAY			
1. POD OPEN DAYS - ALL VENUES			
Days open	9,340	6,628	6,459
% total pod days available	95.7	96.2	98.0
2. DISPLAY PROJECTS COMPLETED - ALL VENUES			
Permanent displays opened (sq metres)	347	1,700	15
Number of temporary displays	23	17	54
Temporary displays (sq metres)	3,877	3,002	6,549
D. FINANCIAL MANAGEMENT			
1. GENERATION OF ADDITIONAL INCOME - ALL VENUES			
	\$ (%)	\$ (%)	\$ (%)
Entrance fees	1,104,000 (+30.65)	845,000 (-0.01)	848,152 (-7.2)
Interest	179,000 (-31.9)	263,000 (+23.0)	213,807 (-15.2)
Shop receipts	680,000 (+9.5)	621,000 (-41.4)	1,058,933 (+38.2)
Research grants	448,000 (+57.7)	284,000 (-25.0)	378,776 (+2.7)
Cash donations/Sponsorships *	538,000 (-6.9)	578,000 (+9.32)	528,726 (-18.8)
Consultancy	647,000 (+15.9)	558,000 (+75.7)	317,533 (+4.8)
Café lease	30,000 (-22.4)	38,678 (+34.1)	28,848 (-43.4)
Temporary exhibitions	148,000 (-34.2)	225,000 (-79.0)	1,071,308 (+56.2)
Other **	2,482,000 (+108.9)	1,188,322 (+47.7)	804,546 (+30.19)
Total	6,256,000	4,601,000	5,250,629
Notes: * Cash figure; ** Includes \$1,719,000 grant from QHTN for construction of Cobb & Co. extensions			
2. SHOP INCOME			
	\$	\$	\$
Main Venue	352,190	379,827	795,333
Queensland Sciencecentre	103,908	105,701	109,445
Tropical Queensland	144,501	18,915	18,956
Cobb and Co.	25,254	35,033	32,629
WoodWorks	14,427	15,666	14,370
North Western Queensland	39,518	65,753	88,200
3. SHOP INCOME PER VISITOR			
	\$	\$	\$
Main Venue	1.00	1.07	1.66
Queensland Sciencecentre	0.71	0.78	0.81
Tropical Queensland	1.98	1.27	2.65
Cobb and Co.	1.37	1.92	1.74
WoodWorks	2.22	2.25	1.87

	2000/2001	1999/2000	1998/99
4. SELF-GENERATED INCOME			
% of non-capital grant	39.66	37.64	44.92
5. RELATIVE EXPENDITURE ON SALARIES			
Salary as % of non-capital grant	84.96	84.70	79.55
Salary as % of total expenditure	57.13	50.83	51.68

E. COLLECTIONS MANAGEMENT

1. COLLECTION PROJECTS			
Increase in value of collections	\$9,955,000	\$9,496,000	\$4,082,000
Purchase cost of new collections	\$42,304	32,333	\$45,670
Number of items conserved	1,698	3,553	1,866
Number of items audited	* 251,749	72,039	97,903
Number of items accessioned	45,251	61,739	93,584

* Includes 180,000 items from University of Qld geology collection

F. SCHOLARSHIP

1. RESEARCH PROJECTS			
Number of research publications	137	133	203
Pages of <i>Memoirs</i> produced	790	920	1,738
Number of published acknowledgements	133	164	148
Number of learned staff presentations	224	179	209
Localities investigated	458	394	384
Research projects commenced	42	53	57
Research projects completed	24	57	53
Species or items yielding new information	28,781	24,670	61,766
2. SCHOLARLY PUBLICATIONS MOVEMENT			
<i>Memoirs</i> volumes exchanged	1,404	1,401	654

G. HUMAN RESOURCES

1. PERMANENT : TEMPORARY STAFF (ALL VENUES) AND % OF TOTAL PAID STAFF IN:-

Director	2:0 (1%)	2:0 (1%)	3:0 (1%)
Natural Environment	32:18 (18%)	37:11 (17%)	40:16 (21%)
Cultural Heritage and Branch Development	19:6 (9%)	22:9 (16%)	26:17 (16%)
Museum Services	46:38 (31%)	48:33 (25%)	39:24 (23%)
Admin and Support	7:0 (3%)	6:0 (2%)	5:0 (2%)
Branch Museums	27:40 (25%)	27:37 (23%)	25:29 (20%)
Marketing	12:24 (13%)	14:31 (16%)	16:30 (17%)
Total	145:126	156:121	154:116

2. HONORARY STAFF — ALL VENUES

Number of paid staff : honorary staff	271:578	277:564	270:603
% paid staff : honorary staff	32:68	33:67	31:69

3. PERMANENT STAFF TURNOVER

Natural Environment	2	3	4
Cultural Heritage and Branch Development	2	5	1
Museum Services	7	4	1
Admin and Support	0	0	0
Branch Museums	2	2	2
Marketing	3	5	2

	2000/2001	1999/2000	1998/99
4. ABSENTEEISM			
Sick leave occasions	454	529	501
Hours of sick leave	6,353	6,661	5,593
Hours of workers compensation	153	950	573
Hours of special leave	10,080	6,028	9,788
5. TRAINING			
% of gross salary expenditure	0.40	0.45	0.42

H. BUILDING MAINTENANCE

1. COSTS — Building maintenance and running costs	\$	\$	\$
Main Venue	1,635,312	1,508,670	1,934,471
Queensland Sciencentre	612,235	621,635	587,855
Tropical Queensland	507,029	290,638	147,934
Cobb and Co.	39,033	30,873	33,296
Coomera	24,391	19,112	17,663
North Western Queensland	15,807	25,366	21,537
75 Grey Street	157,423	151,454	146,889
West End Store	167,595	173,956	162,988

I. DECENTRALISATION — ALL VENUES

1. EXTENT			
Display space decentralised	67.2%	78.00%	50.42%
Total space decentralised	57.27%	56.87%	44.39%
Units of service decentralised	83.4%	55.30%	55.92%
Number of travelling displays	3	3	6
Venues serviced regionally	7	4	14
Days of field work	827	1,829	1,317

J. BUILDING MANAGEMENT

1. WORKPLACE, HEALTH AND SAFETY			
Number of accidents (Staff/Public):			
Main Venue	6/3	14/5	11/3
Queensland Sciencentre	2/14	4/18	1/16
Tropical Queensland	2/0	0/3	0/0
Cobb and Co.	1/0	0/0	0/0
North Western Queensland	0/0	0/0	0/0

K. ADMINISTRATIVE FUNCTIONS — ALL VENUES

1. DELAYS IN RESPONDING			
Ministerial/ departmental letters unanswered after 2 weeks	0.1%	0.02	0.5%
Accounts unpaid after 4 weeks	3.5%	3.8	4.0%

QUEENSLAND MUSEUM ABN
91 522 611 802

FREEDOM OF INFORMATION ACT 1992

During 2000/2001 the Museum received one (1) request for documents under the *Freedom of Information Act 1992*. After consultation with an interested third party, a decision was made to release the documents. However, the third party raised substantial concerns to the decision and requested an internal review of the decision. The review found that the original decision should stand.

At the time of this report, the third party had indicated that they would proceed to external review of the decision, by the Information Commissioner.

EQUAL OPPORTUNITY IN PUBLIC EMPLOYMENT ACT 1992

The EEO Committee continued to meet as required, the Annual Report for 2000/2001 and plan for 2001/2002 has been lodged in terms of the Act and an EEO Management Plan for the period 1 July 2000 to 30 June 2001 was implemented.

ETHICS ACT

During 2000/2001 the Museum carried out a complete revision of the existing Code of Conduct.

WHISTELBLOWERS PROTECTION ACT 1994

No disclosures were received under this legislation for the period 1 July 2000 to 30 June 2001.

APPENDIX IV

OVERSEAS TRAVEL

Person	Place	Period	Purpose
Dr R.D. ADLARD	USA, New Zealand	3 - 29 Sept 2000	Invitation from American Fisheries Society (Fish Health Section) to present a workshop on mollusc disease and a paper on Australian disease management at the annual conference (Pensacola, Florida); attend council meeting and joint conference of the New Zealand and Australian Societies for Parasitology, Wellington, New Zealand and present 5 papers with students and colleagues (partially funded by FHS Continuing Education Program)
Dr B. BAEHR	South Africa, Germany	24 Mar -23 Apr 2001	Deliver paper at International Congress of Arachnology
Dr P. DAVEY	Singapore	27 Sept - 23 Oct 2000	Workshop to compile first checklist of crabs of the world
Dr I. GALLOWAY	USA, UK	5 May - 17 May	Attended 96th Annual Meeting of the American Association of Museums in St Louis, USA; meet with CEO's and senior museum colleagues of several major international museums in St Louis, Chicago, and London that have undertaken recent developments that are relevant to the future directions of the Queensland Museum
Drs J.N.A. HOOPER & G. WOERHEIDE	Bali, Indonesia	21-28 Oct 2000	Deliver papers at 9th International Coral Reef Symposium
Dr J.N.A. HOOPER	Bali, Indonesia	21 - 28 Jan 2001	Field trials for discovery and collection of Indonesian marine invertebrates for pharmaceutical and biodiversity discovery, in collaboration with the Udayana Universitaas, Denpasar
P. ILLIDGE	Kawa Island, Papua new Guinea	28 Feb - 15 Mar 2001	Investigation of aircraft wrecksite
Dr P.A. JELL	UK	31Apr - 21May 2001	Deliver papers at 3rd International Meeting on Trilobites and study collections and museums
Drs G.B. MONTEITH & C.J. BURWELL	New Caledonia	9 - 23 Oct 2000	Field collecting of insect specimens for taxonomy, biogeography and molecular phylogeny research
Dr G. POTTER	USA, UK, Singapore	4 - 27 Oct 2000	Study innovation/invention award schemes and exhibitions; attend Association of Science and Technology Centres conference in Cleveland; and progress planning with the Commonwealth Science Council for presentation of an exhibition and science communication symposium at CHOGM 2001
Dr G. POTTER	New Zealand	27 Feb - 5 Mar 2001	Attend the annual meeting of Directors of the Australasian Science & Technology Exhibitors Network
Dr. R.J. RAVEN	South Africa, Germany, Italy	24 Mar - 23Apr 2001	Deliver papers at International Congress of Arachnology, handover of Presidency; photography of types of Australian spider species in Museum, Genova, Italy
J. TRUE	Bali, Indonesia	18 - 25 Oct 2000	Deliver paper at 9th International Coral Reef Symposium
A. VIDUKA	Antarctica	28 Dec - 29 Jan 2001	Conservation research, Mawson Hut project
Dr C. WALLACE	Bali, Indonesia	18 Oct - 3 Nov 2000	Deliver papers at 9th International Coral Reef Symposium and associated research

APPENDIX V

FUNCTIONS AND POWERS OF THE BOARD

Queensland Museum Act 1970

12 Functions of board

- (1) The functions of the board shall be—
- (a) the control and management of the museum and of all natural history, historical and technological collections, and other chattels and property contained therein; and
 - (b) the maintenance and administration of the museum in such manner as will effectively minister to the needs and demands of the community in any or all branches of the natural sciences, applied sciences, technology and history, associated with the development of the museum as a museum of general science and to this end shall undertake—
 - (i) the storage of suitable items pertaining to the study of natural sciences, applied sciences, technology and history, and exhibits and other personal property; and
 - (ii) the promotion of scientific and historical research; and
 - (iii) the provision of educational facilities through the display of selected items, lectures, films, broadcasts, telecasts, publications and other means; and
 - (iv) the operation of workshops for the maintenance and repair of exhibits and other things; and
 - (v) any other action which in the opinion of the board is necessary or desirable; and
 - (c) the control and management of all lands and premises vested in or placed under the control of the board; and
 - (d) the management, operation and control of the aerodrome constructed or to be constructed at the Queensland Museum branch, Coomera; and
 - (e) to perform the functions given to the board under another Act; and
 - (f) to perform functions that are incidental, complementary or helpful to, or likely to enhance the effective and efficient performance of, the functions mentioned in paragraphs (a) to (e); and
 - (g) to perform functions of the type to which paragraph (f) applies and which are given to the board in writing by the Minister.
- (2) In performing the function mentioned in subsection (1)(b), the board is to have regard to the desirability of providing for the storage of items and the promotion of research relating to Queensland.
- (3) Before giving a function for subsection (1)(g), the Minister must consult with the board about the function.

14 General powers

- (1) For performing its functions, the board has all the powers of an individual and may for example—
- (a) enter into arrangements, agreements, contracts and deeds; and
 - (b) acquire, hold, deal with and dispose of property; and
 - (c) engage consultants; and
 - (d) appoint agents and attorneys; and
 - (e) charge, and fix terms, for goods, services, facilities and information supplied by it; and
 - (f) do anything else necessary or desirable to be done in performing its functions.
- (2) Without limiting subsection (1), the board has the powers given to it under this or another Act.
- (3) The board may exercise its powers inside and outside Queensland, including outside Australia.
- (4) In this section—
- “power” includes legal capacity.

APPENDIX VI

BOARD OF THE QUEENSLAND MUSEUM

FINANCIAL STATEMENTS FOR THE YEAR ENDED 30 JUNE 2001

Board of the Queensland Museum*Statement of Financial Performance*

for year ended 30 June 2001

	Note	2001 \$000	2000 \$000
Revenues from ordinary activities			
User charges	3	2,318	2,099
Grants and other contributions	4	14,726	12,882
Other	5	1,297	1,508
Total revenues from ordinary activities		18,341	16,489
Expenses from ordinary activities			
Employee expenses	6	10,268	10,069
Supplies and services	7	6,556	8,858
Depreciation and amortisation	8	1,065	729
Other	9	83	856
Total expenses from ordinary activities excluding borrowing costs expense		17,972	20,512
Net (deficit)		369	(4,023)
Increase (decrease) in asset revaluation reserve	19	10,443	9,785
Net amount of each revenue, expense, valuation or other adjustment not disclosed above recognised as a direct adjustment to equity		(1)	-
Total revenues, expenses and valuation adjustments recognised directly in equity		10,442	9,785
Total changes in equity other than those resulting from transactions with owners as owners		10,811	5,762

This Statement of Financial Performance should be read in conjunction with the accompanying notes.

Board of the Queensland Museum*Statement of Financial Position*

as at 30 June 2001

	Note	2001 \$000	2000 \$000
Current assets			
Cash	10	1,887	1,698
Receivables	11	392	352
Inventories	12	751	789
Other	13	28	29
Total current assets		<u>3,058</u>	<u>2,868</u>
Non-current assets			
Collections	14	156,563	146,608
Property, plant and equipment	15	30,076	28,661
Total non-current assets		<u>186,639</u>	<u>175,269</u>
TOTAL ASSETS		<u>189,697</u>	<u>178,137</u>
Current liabilities			
Creditors	16	525	328
Provisions	17	811	784
Other	18	741	216
Total current liabilities		<u>2,077</u>	<u>1,328</u>
TOTAL LIABILITIES		<u>2,077</u>	<u>1,328</u>
NET ASSETS		<u>187,620</u>	<u>176,809</u>
Equity			
General equity	19	1,081	1,082
Accumulated surplus	19	18,261	17,892
Asset revaluation reserve	19	168,278	157,835
TOTAL EQUITY		<u>187,620</u>	<u>176,809</u>

This Statement of Financial Position should be read in conjunction with the accompanying notes.

Board of the Queensland Museum

Statement of Cash Flows
for year ended 30 June 2001

	Note	2001 \$000	2000 \$000
Cash flows from operating activities			
<i>Inflows :</i>			
User charges		2,887	2,147
Grants and contributions		14,726	13,033
Interest receipts		179	263
GST collected on sales		522	7
GST input tax credits received		707	-
Other		1,114	1,160
<i>Outflows:</i>			
Employee costs		(10,262)	(9,943)
Supplies and services		(6,326)	(9,965)
GST paid on purchases		(820)	(3)
GST remitted to ATO		(467)	-
Other		(81)	(234)
Net cash provided by(used in) operating activities	20	<u>2,179</u>	<u>(3,535)</u>
Cash flows from investing activities			
<i>Inflows:</i>			
Sale of property, plant and equipment		19	207
<i>Outflows:</i>			
Payments for property, plant and equipment		(2,009)	(1,282)
Net cash (used in) investing activities		<u>(1,990)</u>	<u>(1,075)</u>
Net increase/(decrease) in cash held		189	(4,610)
Cash at beginning of financial year		1,698	6,308
Cash at the end of financial year	10	<u>1,887</u>	<u>1,698</u>

This Statement of Cash Flows should be read in conjunction with the accompanying notes.

Board of the Queensland Museum

*Notes to and Forming Part of the Financial Statements
for year ended 30 June 2001*

1. Objectives of the Organisation

To collect and interpret material evidence of the State's natural resources, history and development, and use it for the enjoyment, education and cultural enrichment of the community.

The Museum is predominantly funded for the outputs it delivers by Parliamentary appropriations. It also provides the following services on a fee for service basis.

- admission charges; and
- consultancy services

2. Summary of Significant Accounting Policies

(a) Basis of Accounting

The financial statements are a general purpose financial report and have been prepared in accordance with the *Financial Administration and Audit Act 1977*, the *Financial Management Standard 1997*, Australian Accounting Standards, Statements of Accounting Concepts, Urgent Issues Group Abstracts and other prescribed requirements.

The following new or revised Australian Accounting Standards became operative during the 2000-01 year and have been adopted where relevant:

- AAS1 *Statement of Financial Performance*
- AAS36 *Statement of Financial Position; and*
- AAS37 *Financial Report Presentation and Disclosures.*

Transfers of assets and liabilities between wholly Queensland government owned entities, that do not arise as a result of machinery of government changes are recognised as direct adjustments to contributed equity in accordance with the concepts contained in UIG Abstract 38 *Contributions by Owners Made to Wholly-Owned Public Sector Entities*.

Except where stated, the financial statements have been prepared in accordance with the historical cost convention and applicable accounting standards. The accounting policies adopted are generally consistent with those of the previous year except where otherwise stated. The accrual basis of accounting has been adopted for all transactions and balances.

(b) Non-collection Grants and Other Contribution Revenue

Non-collection grants, donations and gifts which are non-reciprocal in nature are recognised as revenues.

Board of the Queensland Museum

Notes to and Forming Part of the Financial Statements

for year ended 30 June 2001

2. Summary of Significant Accounting Policies (contd)

(c) Cash

For financial reporting purposes, cash includes all cash and cheques received but not banked as well as deposits at call with financial institutions. It also includes liquid investments with short periods to maturity which are convertible readily to cash on hand at the investor's option and which are subject to an insignificant risk of changes in value.

(d) Receivables

Receivables are recognised at the amount due at the time of sale or service delivery. The collectability of receivables is assessed periodically with provision being made for doubtful debts. All known bad debts have been written off. Settlement on trade debtors is generally required within thirty days.

(e) Inventories

Inventories represent stock on hand for sale through the Museum shop operations. Inventories on hand are valued at the lower of cost and net realisable value. Cost is based on a weighted average cost method.

(f) Acquisitions of Assets

Cost is used for the initial recording of all acquisitions of assets, other than collections, controlled by the entity. Assets acquired at no cost or for nominal considerations are recognised at their estimated value at date of acquisition. Cost is determined as the value given as consideration plus costs incidental to the acquisition, including all other costs incurred in getting the assets ready for use including architects' fees and engineering design fees.

(g) Property, Plant and Equipment

All items of property, plant and equipment with a cost, or other value, of \$2000 or greater are recognised in the year of acquisition. Items with a lesser value are expensed.

Land, although ownership is retained by the Crown, is administered by the Queensland Museum. The economic benefits of this land accrue to the Queensland Museum and it is held subject to a Deed of Grant in Trust, pursuant to S. 35 of the Land Act 1944. The Queensland Museum cannot dispose of this land without the prior approval of the Governor in Council.

Board of the Queensland Museum

Notes to and Forming Part of the Financial Statements
for year ended 30 June 2001

2. Summary of Significant Accounting Policies (contd)

(h) Collections

The Museum Collections are recorded in the financial statements at a value adopted by the Board of the Queensland Museum. The valuation of the Museum Collections is based on a professional assessment of the estimated market value or the cost of the replacement of the items of the Collections. The valuation is conducted by the Director of the Museum in consultation with curatorial staff and is accepted by the Board. The Museum Collections are considered to have an indeterminate useful life. Comprehensive asset revaluations are performed every five (5) years, with an annual indexation between the full revaluations at CPI. An indexation revaluation of Collections was carried out at 30 June 2001. Additions to the collections by search, gift, bequests, etc are not initially recognised at the date of acquisition, but are incorporated in the valuation process at year end.

(i) Amortisation and Depreciation of Property, Plant and Equipment

Land, being an asset with an unlimited useful life, is not depreciated.

Depreciation on property, plant and equipment is calculated using the diminishing value method so as to write off the values of each depreciable asset, less its estimated residual value, progressively over its estimated useful life.

Any expenditure that increases the originally assessed capacity or service potential of an asset is capitalised and the new depreciable amount is depreciated over the remaining useful life of the asset.

For each class of depreciable asset the following depreciation rates were used:

<i>Class</i>	<i>Depreciation Rates</i>
Buildings	3%
Plant and equipment:	
Computers	30%
Motor vehicles	22.5%
Scientific equipment	15%

Board of the Queensland Museum

Notes to and Forming Part of the Financial Statements
for year ended 30 June 2001

2. Summary of Significant Accounting Policies (contd)**(j) Revaluations of Non-Current Physical Assets**

Comprehensive revaluations are performed for assets comprising land and buildings by an independent professionally qualified valuer every five years, with an annual indexation between the full revaluation, using appropriate indices. Australian Accounting Standard AAS38 *Revaluation of Non-Current Assets*, requires that all non-current physical assets be measured at either fair value or cost. This standard came into effect on 1 July 2000. Public Sector entities have been granted a transitional period in moving to the new standard pending the release of Queensland Treasury guidelines on its implementation. A comprehensive revaluation of assets was due at 30 June 2001. In view of the transition to AAS38 and the cost involved in undertaking a comprehensive revaluation, a non-comprehensive Board revaluation, using an indexation methodology provided by the Australian Valuation Office, was performed for 2000-01.

The Board will continue to apply deprival value methodology to Plant and Equipment.

For revaluation of collections see note 2(h).

(k) Leases

A distinction is made in the financial statements between finance leases, that effectively transfer from the lessor to the lessee substantially all the risks and benefits incidental to ownership, and operating leases under which the lessor effectively retains substantially all such risks and benefits.

Where a non-current asset is acquired by means of a finance lease, the asset is recognised at an amount equal to the present value of the minimum lease payments. The liability is recognised at the same amount. Lease payments are allocated between the principal component and the interest expense.

Operating lease payments are representative of the pattern of benefits derived from the leased assets and accordingly are charged to the Statement of Financial Performance in the periods in which they are incurred.

(l) Financial Investments

Investments are brought to account at the lower of cost and recoverable amount. Interest revenues are recognised as they are accrued.

(m) Creditors

Creditors are recognised at the amount to be paid in the future for goods and services received.

Board of the Queensland Museum

*Notes to and Forming Part of the Financial Statements
for year ended 30 June 2001*

2. Summary of Significant Accounting Policies (contd)

(n) Employee Entitlements

Wages and Salaries and Annual Leave

Liabilities for wages, salaries and annual leave are recognised in the Statement of Financial Position as the amount unpaid at the reporting date in respect of all employee services and related on-costs, such as payroll tax, workcover premiums and employer superannuation contributions.

Long Service Leave

Long service leave is funded by a government scheme whereby a levy is made on the agency to cover this expense and amounts paid to employees for long service leave are claimed from the scheme as reimbursement.

Superannuation

Employer contributions for superannuation expense are determined by the State Actuary. No liability is recognised for accruing superannuation benefits as this liability is held on a whole of Government basis and reported in the whole of Government financial statements prepared in terms of AAS 31 *"Financial Reporting by Governments"*.

(o) Taxation

The Museum's activities are exempt from Commonwealth taxation except for fringe benefits tax and Goods and Services Tax (GST). As such, input tax credits receivable and GST payable from/to the Australian Tax Office are recognised and

(p) Insurance

The Museum carries general insurance in the areas of Directors and Officers, Public Liability, Motor Vehicles, Machinery Breakdown, Marine Hull, Fidelity, Personal Accident and limited Special Risks cover for items on loan. However, in accordance with Queensland Treasury's policy *"Guidelines on Risk Management and Insurance"*, other Museum assets are not insured

(q) Resources Received Free of Charge or For Nominal Value

Contributions of services are recognised only if the services would have been purchased if they had not been donated and their value can be measured reliably. Where this is the case, an equal amount is recognised as a revenue and an expense.

Board of the Queensland Museum

Notes to and Forming Part of the Financial Statements
for year ended 30 June 2001

2. Summary of Significant Accounting Policies (contd)

(r) Corporate Administration Agency

The Corporate Administration Agency (CAA) was established on 1 July 1997, as a unit of Arts Queensland. *The Arts Legislation Amendment Act 1997* transferred the assets and liabilities of the Queensland Cultural Centre Trust (QCCT) that was abolished in December 1997 to the State and the CAA became the manager of the Cultural Centre precinct. The Board of the Queensland Museum had a signed lease agreement with the QCCT and the lease has been assumed by the State of Queensland (Section 85(2) of the Act). While the State does not charge rent on the premises occupied by the Museum, the museum does make a contribution to the continued maintenance of the building occupied. The provision of the building and items of fitout, including infrastructure plant and equipment, forms part of this agreement.

(s) Comparatives

Comparative information has been restated where necessary to be consistent with disclosures in the current reporting period.

(t) Rounding

Amounts included in the financial statements have been rounded to the nearest \$1,000 or, where that amount is \$500 or less, to zero.

(u) The Harry West Trust

The Board of the Queensland Museum has been appointed as the trustee of "The Harry West Memorial Fund", a testamentary trust established in accordance with the last will and testament of Henry (Harry) Thomas West (deceased). Assets of the Trust comprise nine Brisbane residential properties. All income from the Trust is applied to the benefit of the Museum and is included as miscellaneous income.

Board of the Queensland Museum

Notes to and Forming Part of the Financial Statements
for year ended 30 June 2001

	2001 \$000	2000 \$000
3. User charges		
Admission charges		
General	1,104	845
Special exhibitions	148	225
Consultancy	647	558
Subscriptions	156	152
Functions/Venue hire	50	86
Other	213	233
	2,318	2,099
4. Grants and other contributions		
Grants - State Government	* 12,387	11,888
Donations	83	402
Industry contributions	93	176
Commonwealth government grants	86	-
Local government contributions	-	6
Grants - Other	** 2,077	410
	14,726	12,882
5. Other revenues		
Interest	179	263
Gain on sale of property, plant and equipment	4	73
Sales revenue - shops	680	621
Miscellaneous	434	551
	1,297	1,508

* Includes \$0.302m for superannuation adjustment. ** Includes \$1.7 million in funding from Queensland Heritage Trails for the construction of the Cobb & Co Carriage Factory in Toowoomba.

Board of the Queensland Museum*Notes to and Forming Part of the Financial Statements
for year ended 30 June 2001*

	2001	2000
	\$000	\$000
6. Employee expenses		
Wages and salaries	7,681	7,821
Employer superannuation contributions	* 1,226	955
Long service leave levy	123	115
Annual leave expenses	567	555
Other	671	623
	<u>10,268</u>	<u>10,069</u>
* 2001 includes a one-off back payment of \$0.302m for superannuation entitlement arrears.		
7. Supplies and services		
Corporate services charges	705	689
Consultants and contractors	90	151
Materials	396	419
MTQ - installation of initial exhibitions	-	1,199
Repairs and maintenance	172	117
Travel	228	454
Contribution to Queensland Cultural Centre facilities	1,625	1,509
Property lease and rental	840	872
Special Exhibitions	82	222
Inventory purchases - shops	274	263
Operating expenses	2,144	2,963
	<u>6,556</u>	<u>8,858</u>
8. Depreciation and amortisation		
Plant and equipment	470	188
Buildings	595	541
	<u>1,065</u>	<u>729</u>
9. Other expenses		
External audit fees	11	15
Internal audit fees	-	2
Bad debts expense	3	133
Losses from the disposal of non-current assets	2	1
Write-off of existing MTQ building - replaced by new MTQ complex.	-	631
Net liabilities assumed from other Qld Government agencies	-	1
Other	67	73
	<u>83</u>	<u>856</u>

Board of the Queensland Museum

Notes to and Forming Part of the Financial Statements
for year ended 30 June 2001

	2001	2000
	\$000	\$000
10. Cash		
24 hour call deposits	1,834	1,570
Cash at bank	41	117
Imprest totals	12	11
	<u>1,887</u>	<u>1,698</u>
11. Receivables		
<i>Current</i>		
Trade debtors	252	188
Less: provision for doubtful debts	(3)	-
	<u>249</u>	<u>188</u>
GST input tax credits receivable	113	-
GST payable	(55)	-
Net GST receivable	58	-
Long service leave reimbursements	38	12
Unexpended advances	-	2
Other	47	150
	<u>392</u>	<u>352</u>
12. Inventories		
<i>Inventory held for resale</i>		
Shops	751	789
	<u>751</u>	<u>789</u>
13. Other Assets		
Prepayments	25	26
Other	3	3
	<u>28</u>	<u>29</u>

Board of the Queensland Museum

Notes to and Forming Part of the Financial Statements
for year ended 30 June 2001

	2001 \$000	2000 \$000
14. Collections		
<i>Non-current</i>		
Museum Collections		
Opening valuation	146,608	137,112
Additions at Museum Board valuation	6,627	6,480
Revaluation at indexation - Museum Board	3,328	3,016
	<u>156,563</u>	<u>146,608</u>
15. Property, plant and equipment		
<i>Non-current</i>		
Land:		
At external valuation 1996	-	6,878
Additions - at cost	-	374
At Museum Board valuation	7,741	-
	<u>7,741</u>	<u>7,252</u>
<p>Included in land owned by the Museum is land at Coomera and the sites of the Cobb & Co Museum, the Museum of Tropical Queensland and the Museum of North Western Queensland. In addition the Queensland Museum at Southbank and the Science Centre in George Street, Brisbane are located on leased properties.</p>		
Buildings:		
At Museum Board valuation 2001	20,778	20,763
Accumulated depreciation	(1,328)	(733)
	<u>19,450</u>	<u>20,030</u>
Plant and equipment:		
At deprival value 1997	1,423	1,496
Additions - at cost	863	698
Accumulated depreciation	(1,399)	(956)
	<u>887</u>	<u>1,238</u>
Capital work in progress at cost		
Museum of Tropical Queensland	-	15
Cobb & Co Museum, Toowoomba	1,998	126
	<u>30,076</u>	<u>28,661</u>
Total property, plant & equipment - net book value		

Board of the Queensland Museum*Notes to and Forming Part of the Financial Statements*
for year ended 30 June 2001

	2001	2000
	\$000	\$000
16. Creditors		
<i>Current</i>		
Trade creditors	229	10
GST payable	-	7
GST input tax credits receivable	-	(3)
	<hr/>	<hr/>
Net GST payable	-	4
Long service leave levy payable	35	29
Other	261	285
	<hr/>	<hr/>
	525	328
	<hr/>	<hr/>
17. Provisions		
<i>Current</i>		
Annual leave	811	784
	<hr/>	<hr/>
	811	784
	<hr/>	<hr/>
18. Other Liabilities		
Unearned revenue	741	216
	<hr/>	<hr/>

Board of the Queensland Museum*Notes to and Forming Part of the Financial Statements
for year ended 30 June 2001*

	General Equity		Accumulated Surplus		Asset Revaluation Reserve	
	2001 \$000	2000 \$000	2001 \$000	2000 \$000	2001 \$000	2000 \$000
19. Changes in equity						
Opening balance	1,082	-	17,892	21,915	157,835	148,050
Increase in net assets - operating	0	-	369	(4,023)		-
Revaluation increment						
Museum Collection	-	-	-	-	3,328	3,016
Land	-	-	-	-	488	289
Increase in valuation - to new collection items					6,627	6,480
Net leave liabilities transferred from other government entities	(1)	-	-	-	-	-
Adjustment due to elimination of opening balance of provision for long service leave		1,082	-	-	-	-
Closing balance	1,081	1,082	18,261	17,892	168,278	157,835

Board of the Queensland Museum

Notes to and Forming Part of the Financial Statements
for year ended 30 June 2001

	2001 \$000	2000 \$000
20. Reconciliation of net surplus/deficit to net cash provided by (used in) operating activities		
Surplus/deficit from ordinary activities	369	(4,023)
Non-cash items:		
Depreciation expense	1,065	729
Bad debts expense	3	133
(Gain) on sale of property, plant and equipment	(4)	(73)
Loss on sale of property, plant and equipment	2	1
Write-off of former MTQ building for new MTQ complex	-	631
Net leave liabilities transferred	(1)	-
Changes in assets and liabilities		
(Increase)/decrease in net receivables	(43)	(127)
(Increase)/decrease in inventories	38	(62)
(Increase)/decrease in prepayments	1	55
Increase/(decrease) in creditors	197	(1,028)
Increase/(decrease) in employee provisions	27	58
Increase/(decrease) in other liabilities	525	171
Net cash provided by (used in) operating activities	2,179	(3,535)
21. Non-cash financing and investing activities		
Assets and liabilities received or donated/transferred by the Museum and recognised as revenues and expenses are set out in Note 9.		
22. Commitments for Expenditure		
<i>Non-cancellable operating lease commitments</i>		
Not later than one year	221	304
Later than one year and not later than five years	100	498
Later than five years	-	-
	321	802

Commitments have reduced significantly due to the change in arrangements for the Museum's West End storage facility at Montague Road, and current photocopier equipment.

Board of the Queensland Museum

Notes to and Forming Part of the Financial Statements
for year ended 30 June 2001

	2001 \$000	2000 \$000
22. Commitments for Expenditure (contd)		
<i>Expenditure Commitments</i>		
Material expenditure commitments contracted for but not recognised are payable as follows		
Cobb & Co Carriage Factory	-	1,874
	-	1,874
Not later than one year		1,863
Later than one year and not later than two years	-	11
	-	1,874
<i>Other Commitments</i>		
Service Level Agreements with CAA	2,417	2,322
	2,417	2,322
Not later than one year	2,417	2,322
	2,417	2,322

23. Pandora Foundation

The Pandora Foundation Limited was established during 1995 for the purpose of assisting the Museum in the HMS Pandora project. The Foundation donated to the Museum a total of \$362,000 during 2000-01, which has been treated as unearned revenue at balance day, pending matching expenditure being incurred.

24. Contingencies

(a) *Native Title claims over Museum land*

As at 30 June 2001, no native title claims have been made on Museum land.

There were no other known contingent assets or liabilities at 30 June 2001.

Board of the Queensland Museum

Notes to and Forming Part of the Financial Statements
for year ended 30 June 2001

25. Financial Instruments

(a) Terms conditions and accounting policies

The Museum's accounting policies including the terms and conditions of each class of financial asset and financial liability at balance date are as follows:

Financial Assets

Financial Instrument	Accounting Policies	Terms and Conditions
Cash	Cash includes cash on hand, imprest account totals and 24 hour call deposits and similar investments that are readily convertible to cash.	Cash deposited with the Queensland Treasury Corporation earns interest at the Corporations daily market rate.
Receivables (trade debtors)	Trade debtors are carried at nominal amounts less any provision for doubtful debts. A provision for doubtful debts is recognised when collection of the full nominal amount is no longer probable.	Trade sales require payment within 30 days from end of month in which a sale is invoiced.
Receivables (other than trade debtors)	Amounts (other than trade debtors) are carried at nominal amounts.	Other than receivables from Government, terms are 30 days net.

Financial Liabilities

Financial Instrument	Accounting Policies	Terms and Conditions
Creditors	Recognition - upon receipt of goods or services irrespective of whether an invoice has been received. Measurement - based on agreed purchase/contract price.	The amounts are unsecured and are usually settled on 30 day terms.

Board of the Queensland Museum

Notes to and Forming Part of the Financial Statements
for year ended 30 June 2001

25. Financial Instruments contd

(b) Interest Rate Risk Exposure

The Board of the Queensland Museum is exposed to interest rate risk through its investments in the Queensland Treasury Corporation (QTC) Cash Fund. Cash Fund earnings are credited daily based on the market value of the Cash Fund. At balance date the interest rate was 5.03% (2000 - 5.48%), however the rate changes daily based on the change in market yields.

	Floating Interest Rate \$'000	Contractual Repricing/Maturity Date			Non Interest Bearing \$'000	Total \$'000	Weighted Average Rate %
		1 year or less \$'000	Over 1 year to 5 years \$'000	More than 5 years \$'000			
Financial Assets							
Cash	53	-	-	-	-	53	n/a
QTC cash fund	1,834	-	-	-	-	1,834	5.03
Receivables	-	-	-	-	392	392	n/a
Total	1,887	-	-	-	392	2,279	n/a
Financial Liabilities							
Creditors	-	-	-	-	525	525	n/a
Total	-	-	-	-	525	525	n/a

(a) Floating interest rate represents the most recently administered market rate applicable to the instrument at 30 June 2001.

(b) The fixed rate represents weighted average market interest rate.

Board of the Queensland Museum

Notes to and Forming Part of the Financial Statements
for year ended 30 June 2001

25. Financial Instruments contd

(c) Credit Risk

Credit risk exposure represents the extent of credit related losses that the Museum may be subject to on amounts to be exchanged under loans and accounts receivable from financial assets. Where appropriate, collateral is obtained in the form of security over property.

The Board of the Queensland Museum is not exposed to credit risk through its investments in the QTC Cash Fund as all deposits are capital guaranteed. The capital guarantee is equivalent to the Queensland Government's AAA rating.

The maximum exposure to credit risk at balance date in respect of receivables is the carrying amount, net of any provision for doubtful debts, as disclosed in the balance sheet. There are no material credit risk exposures to any single debtor at balance date.

(d) Net Fair Value

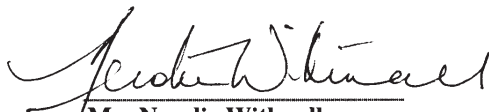
The net fair value is determined as follows:

- The net fair value of cash and cash equivalents and non-interest bearing monetary financial assets and financial liabilities approximate their carrying value.
- The net fair value of other monetary financial assets and financial liabilities is based on market prices where a market exists, or has been determined by discounting expected future cash flows by the current interest rate for financial assets and liabilities with similar risk profiles.


CERTIFICATE OF THE BOARD OF THE QUEENSLAND MUSEUM

The foregoing financial statements have been prepared pursuant to section 46F of the *Financial Administration and Audit Act 1977* and other prescribed requirements. We certify that :

- (a) the statements together with the other information and notes to and forming part thereof are in the form required by the Treasurer and are in agreement with the accounts of the Board of the Queensland Museum; and
- (b) in our opinion –
 - (i) the prescribed requirements for the establishment and keeping of accounts have been complied with in all material respects; and
 - (ii) statements have been drawn up to present a true and fair view, in accordance with prescribed accounting standards, of the transactions of the Board of the Queensland Museum for the financial year ended 30 June 2001, and of the financial position as at the end of that year.


Mrs Nerolie Withnall
Chairman
Board of the Queensland Museum

Date: 30.8.2001


Dr Ian Galloway
Director
Queensland Museum

Date: 30.8.2001

INDEPENDENT AUDIT REPORT

To the Board of the Queensland Museum

Scope

I have audited the general purpose financial statements of the Board of the Queensland Museum for the year ended 30 June 2001 in terms of section 46F of the *Financial Administration and Audit Act 1977*. The financial statements comprise the Statement of Financial Performance, Statement of Financial Position, Statement of Cash Flows, Notes to and forming part of the financial statements and certificates given by the Chairman and Director responsible for financial administration.

The Board is responsible for the preparation and the form of presentation of the financial statements and the information they contain. I have audited the financial statements in order to express an opinion on them.

The audit has been conducted in accordance with *QAO Auditing Standards*, which incorporate the Australian Auditing Standards, to provide reasonable assurance as to whether the financial statements are free of material misstatement. Audit procedures included the examination, on a test basis, of evidence supporting the amounts and other disclosures in the financial statements and the evaluation of accounting policies and significant accounting estimates. These procedures have been undertaken to form an opinion as to whether, in all material respects, the financial statements are presented fairly in accordance with prescribed requirements which include Australian Accounting Standards so as to present a view which is consistent with my understanding of the entity's financial position and the results of its operations and its cash flows.

The audit opinion expressed in this report has been formed on the above basis.

Audit Opinion

In accordance with section 46G of the Financial Administration and Audit Act, I certify that I have received all the information and explanations I have required and, in my opinion -

- . the prescribed requirements in respect of the establishment and keeping of accounts have been complied with in all material respects; and
- . the statements have been drawn up so as to present a true and fair view in accordance with prescribed accounting standards and other prescribed requirements of the transactions of the Board of the Queensland Museum for the financial year 1 July 2000 to 30 June 2001 and of the financial position as at the end of that year.



O C CLARE
Acting Director of Audit
(As Delegate of the Auditor-General of Queensland)



Queensland Audit Office
Brisbane